

Eagle Series IP Speed Dome D/N, 540 TVL, WDR



*Support Pelco-Coaxitron
Manchester, Bi-Phase*

EP-HTQ935-IP 35X OPTICAL ZOOM

- WIDE DYNAMIC
- MUTIPLE PROTOCOLS
- MUTIPLE LANGUAGE
- IP INTEGRATION

Key Features

- MPEG4 / MJPEG Dual Streaming Network
- Day Night + ICR, more than 540 TV Lines of Horizontal Resolution
- 1/4" SONY Super HAD CCD, 35X Optical Zoom (12X Digital Zoom)
 - f=3.4mm (wide) to 119 mm (tele). F1.4~4.2
- 7 alarm inputs, 2 alarm outputs
- 8 programmable zones
- 4 privacy masking zones
- Positioning accuracy up to 0.1 degree
- Black Liner for Discreet Surveillance
- Communication Interface: RS485/ RS422
- Built in 1500W lightning proof and surge proof
- Auto Running: allows the dome to return to any preset, sequence,pattern, panning automatically after a period of time without getting signal
- 4 auto scans with up to 355 degree scan range
- High Sensitivity of 0.01 Lux
- 4 presets tour, each one with up to 32 presets dwell time can be set
- 220 presets with editable time
- 4 privacy masking zones
- 4 Patterns, each one with minimum 180 seconds of record
- Communication Interface: RS485/ RS422
- Baud Rate: 2400 / 4800 / 9600 / 19200 bps
- Support Multiple Protocols: Pelco P/D, VCL, Vicon, Molynx, Kalatel, Ernitec, Lilin, Panasonic. (Pelco-Coaxitron , Manchester, Bi-Phase)
- Video Output: BNC / UTP
- Support Maxi-Watch Professional IP software, multiple IP brands include FINE, AXIS, ACTi, Panasonic, Sony, D-Link, Lumenera, Mobotix, PIXORD, Vivotek and JVC, Dual monitor display, SMART Analysis such as missing object, foreign object, lose focus, camera occlusion etc...(option). For complete information, please refer to page 17
- Free Bundle Basic 36 Channel Recording Software Provided
- CMS Support (option)
- SDK for software integration provided upon customer request

Technical Specifications

Model	EP-HTQ935-IP
Image Sensor	1/4" SONY Super HAD CCD
TV System	PAL: 752(H) x 582(V); 2:1 Interlace NTSC: 768(H) x 494(V); 2:1 Interlace
Horizontal Resolutions	Color: More than 540 TV lines B/W: More than 600 TV Lines
Synchronization	Internal / External V-lock
Optical Lens	35X Optical Zoom, f=3.4mm (wide) - 119mm (tele), F1.4 ~ F4.2
Digital Zoom	12X (420x with optical zoom)
Viewing Angle (H)	55.8° (wide end) to 1.7° (tele end)
Video Output	1.0Vp-p (sync negative)
Gain Control	Auto / Manual (-3 to 28dB, 16 steps)
Minimum Illumination	1.0 Lux (1/60s NTSC 1/50s PAL) 0.01 Lux (1/4s NTSC 1/3s PAL, ICR-ON)
S/N Ratio	≥ 50dB
White Balance	Auto, ATW Indoor Outdoor , One Push WB, Manual WB
BLC	On / Off
ELC	Auto: 1/50 ~ 1/10,000 sec ; Manual: 22 steps
White Balance	Auto (3000° K~7500° K) ATW (2000° K~ 10,000° K) Indoor Outdoor One-push Manual
AE Compensation	Auto, Manual, Backlight compensation, EV compensation, priory mode, bright, slowAE
EV Compensation	-10.5 ~+10.5dB(1.5 dB steps)
Focusing System	Auto (sensitivity: normal, low), One-push AF, manual, Infinity, Interval AF, Zoom Trigger AF
Day Night Function	Yes, with ICR Filter
Aperture Control	16 steps
Preset	220 positions
Focus	Auto / Manual
OSD Language	English, Italian, Spanish, German French & Russian
Operating Temperature	Indoor: -10°C ~ +50°C (14°F ~ +122°F) Outdoor: -40°C ~ +70°C (-40°F ~ +158°F)
Storage Temperature	-20°C ~ +60°C (-4°F ~ +140°F)
Power Supply	AC24V, 50 / 60 Hz
Power Consumption	Indoor: 10W, Outdoor: 50W

Mechanical Specification

Pan Range	360° continuous
Tilt Range	90°
Manual Pan Speed	0.1 — 160°/ sec.
Manual Tilt Speed	0.1 — 160°/ sec.
Preset Speeds	Pan: more than 360° / sec, Tilt: more than 360° / sec.

► Specifications are subjected to change without prior notice.

Eagle Series IP Speed Dome D/N, 480 TVL



*Support Pelco-Coaxitron
Manchester, Bi-Phase*

EP-936-IP 36X OPTICAL ZOOM EP-908-IP 26X OPTICAL ZOOM EP-601-IP 18X OPTICAL ZOOM

- MULTIPLE PROTOCOLS
- MULTIPLE LANGUAGE
- IP INTEGRATION

Key Features

- MPEG4 / MJPEG Dual Streaming Network
- Day Night + ICR, more than 480 TV Lines of Horizontal Resolution
- Quick and easy to install in just a few seconds
- Auto running: allows the dome to return any preset, sequence, pattern, panning automatically after a period of time without getting signal
- 8 programmable zones for EP-936/EP-908/EP-601
- 220 presets with editable time for EP-936/EP-908/EP-601
- 7 alarm inputs, 2 outputs for EP-936/EP-908/EP-601
- 24 privacy zones for EP-936, 8 privacy for EP-908/601
- Positioning accuracy up to 0.1 degree for EP-936/EP-908/EP-601
- 4 auto scans with 355 degree scan range for EP-936/908
- 4 panning with up to 355 degree scan range
- 4 sequences, each one with 32 presets dwell time can be set for EP-936/EP-908/EP-601
- 4 pattern tours each one with up to 180 seconds of record for EP-936/EP-908/EP-601
- Communication Interface: RS485/RS422
- Baud Rate: 2400/4800/9600/19200 bps
- Support multiple protocols: Pelco P/D, VCL, Vicon, Molynx, Diamond, Kalatel, Ernitec, Lilin, Panasonic (Pelco-Coaxitron, Manchester, Bi-Phase)
- Black liner for discreet surveillance
- Built in 1500W lighting proof and surge proof
- Video Output: BNC / UTP
- Support Maxi-Watch Professional IP software, multiple IP brands include FINE, AXIS, ACTI, Panasonic, Sony, D-Link, Lumenera, Mobotix, PIXORD, Vivotek and JVC, Dual monitor display, SMART Analysis such as missing object, foreign object, lose focus, camera occlusion etc...(option). For complete information, please refer to page 17
- Free Bundle Basic 36 Channel Recording Software Provided
- CMS Support (option)
- SDK for software integration provided upon customer request

Technical Specifications

Model	EP-936-IP	EP-908-IP	EP-601-IP
Image Sensor	1/4" SONY Exview HAD CCD		
TV System	PAL: 752(H) x 582(V) ; 2:1 interlace NTSC: 768(H) x 494(V) ; 2:1 Interlace		
Horizontal Resolution	Color: More than 480 TV lines BW: More than 600 TV Lines		
Synchronization	Internal / External V-lock		Internal / V-lock
Optical Lens	36X Optical Zoom, f=3.4mm(wide) - 122.4mm (tele), F1.6 -4.5	26X Optical Zoom, f=3.5mm(wide) - 91.0mm (tele), F1.6 -3.8	18X Optical Zoom, f=4.1mm (wide) - 73.8mm (tele), F1.4 -3.0
Digital Zoom	12X (up to 432X with optical zoom)	12X (up to 312X with optical zoom)	12X (up to 216X with optical zoom)
Video Output	1.0Vp-p (sync negative)		1.0Vp-p (sync negative)
Gain Control	Auto / manual (-3 to 28dB, 16 steps)		
Minimum Illumination	1.0 Lux (1/60s NTSC 1/50s PAL, F1.4) 0.01 Lux (1/4s NTSC 1/3s PAL, ICR-ON)		0.7Lux (1/60s NTSC 1/50s PAL, F1.4) 0.01 Lux (1/4s NTSC 1/3s PAL, F1.4, ICR-ON)
S/N ratio	> 50dB		> 50dB
BLC	On / OFF		
ELC	Auto: 1/50 - 1/10,000 sec. ; Manual: 22 steps		
White Balance	Auto (3000°K-7500°K) ATW (2000°K-10,000°K) Indoor, Outdoor, One-push, Manual		
AE Compensation	Auto, Manual, Backlight compensation, EV compensation, priority mode, Bright, Slow AE	Auto, Manual, Backlight compensation, EV compensation, priority mode, Bright.	
EV Compensation	-10.5 +10.5dB (1.5 dBsteps)		
Focusing System	Auto (sensitivity: normal, low), One-push AF, manual, Infinity, Interval AF, Zoom Trigger AF		
Day Night Function	Yes, with ICR Cut Filter		
Aperture Control	Auto / manual		
Preset	220 positions		
Focus	Auto / manual		
OSD Language	English, Italian, Spanish, German, French, Russian and Portuguese		
Operating Temperature	Indoor: -10°C to +50°C (14°F to 122°F) , Outdoor: -40°C to +70°C (-40°F to 158°F)		
Storage Temperature	-20°C to +60°C (-4°F to 140°F)		
Power Supply	AC24V, 50 / 60Hz		
Power Consumption	Indoor 10W, outdoor 50W		

Mechanical Specification

Pan Range	360° continuous
Tilt Range	90 degrees
Manual Pan Speed	0.1- 160 degree / sec.
Manual Tilt Speed	0.1-160 degree / sec.
Preset Speeds	Pan: more than 360 degrees , tilt: more than 360 degrees

► Specifications are subjected to change without prior notice.

Eagle Series IP Speed Dome Color, 480 TVL



*Support Pelco-Coaxitron
Manchester, Bi-Phase*

EP-201-IP 18X OPTICAL ZOOM EP-221-IP 22X OPTICAL ZOOM

- MULTIPLE PROTOCOLS
- IP INTEGRATION

Key Features

- MPEG4 / MJPEG Dual Streaming Network
- EP-201: 1/4" SONY SUPER HAD CCD, 18X Optical Zoom (12X Digital Zoom) f=4.1mm(wide) to 73.8mm (tele). F1.4 ~ 3.0
- EP-221: 1/4" SONY SUPER HAD CCD, 22X Optical Zoom (16X Digital Zoom) f=3.9mm (wide) - 85.8mm (tele), F1.6 ~ F3.7
- High Sensitivity of 1.0 Lux (typical) F1.4, 50IRE
- 80 presets with editable time
- Positioning accuracy up to 0.1 degree
- Auto Running: allows the dome to return to any preset, sequence, pattern, panning automatically after a period of time without getting signal.
- 2 Panning with up to 355 degree scan range.
- 2 Sequences, each one with up to 32 presets dwell time can be set
- 2 Patterns, each one with minimum 180 seconds of record
- Communication Interface: RS485/ RS422
- Baud Rate: 2400 / 4800 / 9600 / 19200 bps
- Support Multiple Protocols: Pelco P/D, VCL, Vicon, Molynx, Kalatel, Ernitec, Lilin, Panasonic.(Pelco-Coaxitron, Manchester, Bi-Phase)
- Black Liner for Discreet Surveillance
- Built in 1500W lightning proof and surge proof.
- Video Output: BNC / UTP
- Support Maxi-Watch Professional IP software, multiple IP brands include FINE, AXIS, ACTi, Panasonic, Sony, D-Link, Lumenera, Mobotix, PIXORD, Vivotek and JVC, Dual monitor display, SMART Analysis such as missing object, foreign object, lose focus, camera occlusion etc...(option). For complete information, please refer to page 15
- Free Bundle Basic 36 Channel Recording Software Provided
- CMS Support (option)
- SDK for software integration provided upon customer request

Technical Specifications

Model	EP-201-IP	EP-221-IP
Image Sensor	1/4" SONY SUPER HAD CCD	
TV System	PAL: 752 (H) x 582(V) ; 2:1 Interlace NTSC: 768(H) x 494 (V) ; 2:1 Interlace	
Horizontal Resolutions	Color: More than 480 TV lines	Color: More than 480 TV lines
Synchronization	Internal/ External V-lock	
Optical Lens	18X Optical Zoom, f=4.1mm (wide) - 73.8mm (tele), F1.4 ~ F3.0	22X Optical Zoom, f=3.9mm (wide) - 85.8mm (tele), F1.6 ~ F3.7
Digital Zoom	12X (216 x with optical zoom)	16X (352 x with optical zoom)
Video Output	1.0Vp-p (sync negative)	
Gain Control	Auto / Manual (-3 to 28dB, 16 steps)	
Minimum Illumination	1.0 Lux (1/60s NTSC 1/50s PAL, F1.4)	0.7 Lux (F1.6)
S/N Ratio	≥ 50dB	
BLC	On / Off	
ELC	Auto: 1/50 ~ 1/10,000 sec ; Manual: 22 steps	
White Balance	Auto (3000°K ~ 7500°K) ATW (2000°K ~ 10,000°K) Indoor Outdoor One-push Manual	
AE Compensation	Auto, Manual, Backlight compensation, EV compensation, priority mode, bright	
EV Compensation	-10.5 ~ +10.5dB (1.5 dB steps)	
Focusing System	Auto (sensitivity: normal, low), One-push AF, manual, Infinity, Interval AF, Zoom Trigger AF	
Day Night Function	Not available	
OSD Language	English	
Operating Temperature	Indoor: -10°C ~ +50°C (14°F ~ +122°F) Outdoor: -40 °C ~ +70°C (-40°F ~ +158°F)	
Storage Temperature	-20°C ~ +60°C (-4°F ~ +140°F)	
Power Supply	AC24V, 50 / 60 Hz	
Power Consumption	Indoor: 10W, Outdoor: 50W	

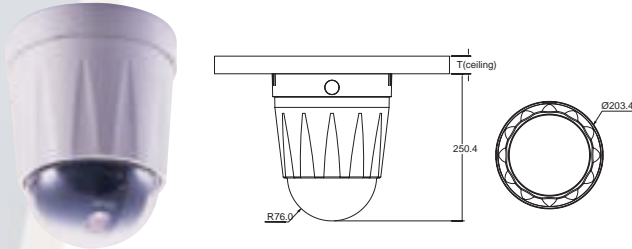
Mechanical Specification

Pan Range	360° continuous
Tilt Range	90°
Manual Pan Speed	0.5 ~ 140 ° / sec.
Manual Tilt Speed	0.5 ~ 140 ° / sec.
Preset Speeds	Pan: more than 300° / sec, Tilt: more than 300° / sec.

► Specifications are subjected to change without prior notice.

Accessories For EP Speed Domes

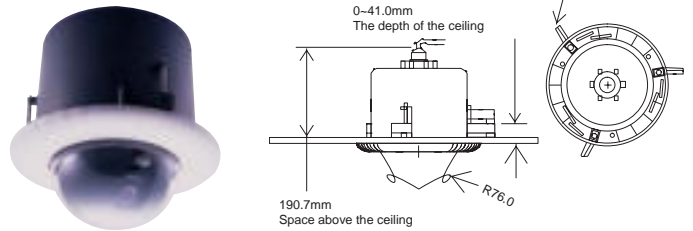
EP-803



Surface Mount For Indoor Housing Use

- Bubble: (standard) clear cover with black insert
- Smoke type (option)
- Vandal proof (option)
- Upper Housing Color: Cool Gray
- Construction: Hard Plastic for the upper housing, acrylic bubble
- Weight (includes PTZ mechanism module): 2.3 kgs

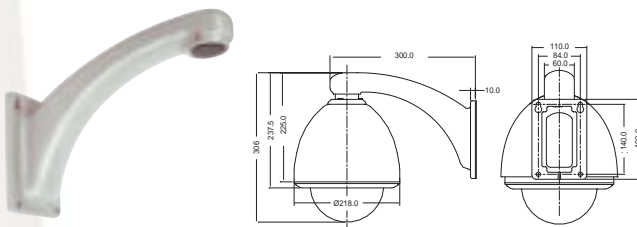
EP-802



Flush Mount For Indoor Housing Use

- Bubble: standard: clear cover with black inserts
- Smoke type (option)
- Vandal proof (option)
- Upper Housing Color: Black
- Construction: Hard Plastic for the upper housing, acrylic bubble
- Weight (includes PTZ mechanism module): 2.5 kgs

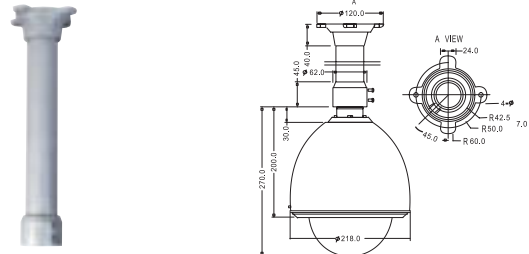
EP-W804



Wall Mount Bracket

- Material: Aluminum
- Dimension: 300mm (L) x 110mm(W) x 160mm (H)
- Weight: 1.2 Kgs

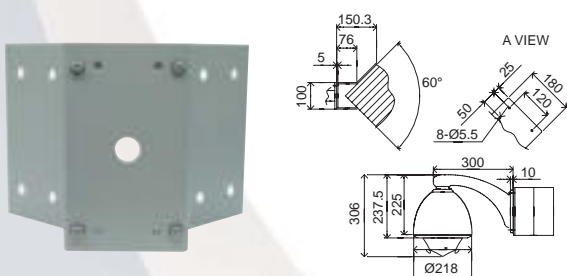
EP-P805



Pendant Mount Bracket

- Material: Aluminum
- Weight: 1.3 Kgs

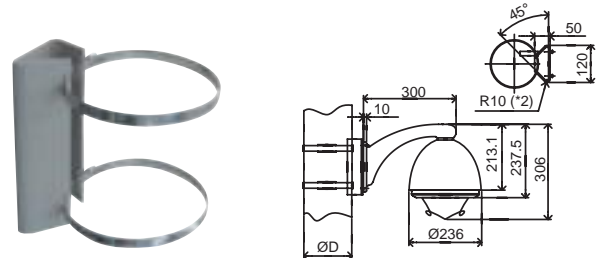
EC-01



Corner Mount

- Material: Aluminum
- Weight: 2.0 Kgs

EP-P02



Pole Mount

- Material: Aluminum
- Weight: 1.1 Kgs

IP Board For Eagle PTZ



Key Features

- MPEG4 / JPEG Dual Streaming support
- Support RS-232
- PTZ control support
- Support PDA, 3GPP Service

Technical Specifications

Model		NETCD1
Hardware		
CPU		ARM 9 ,32 bit RISC
SDRAM		64MB
Flash		8MB
Video in		*1
Video Out		*1
RS-232		*1
Power Consumption		DC 9V
Dimensions		55mm(W) x 67mm(L)
Network		
Ethernet		10/ 100 Base-T
Network Protocol		HTTP, TCP/ IP, SMTP, FTP, PPPoE, DHCP, DDNS, NTP
System		
Video Resolution		NTSC: 720x480, 704x480,352x240, 176x120 PAL: 720x576, 704x576, 352x288, 176x144
Video adjust		Brightness, Contrast, Saturation, Hue
Image snapshot		Yes
Full screen monitoring		Yes
Compression format		MPEG-4/ JPEG
Video Bitrate adjust		CBR, VBR
Motion Detection		Yes, 3 different areas
Triggered action		Mail, FTP
Pre/ Post alarm		Yes, configurable
Security		Password protection
Firmware upgrade		HTTP mode, can be upgraded remotely
Simultaneous connection		Up to 10
Web browsing requirement		
OS		Windows 2000, XP, 2003, Microsoft IE 6.0 or above
Hardware	Suggested	Intel-C 2.0G, RAM: 512MB, Graphic card: 64MB
	Minimum	Intel-C 1.6G, RAM: 256MB, Graphic card: 32MB

► Specifications are subjected to change without prior notice.

IP Camera



[TCP-690U](#)
[TCP-690DNU](#)

Key Features

- Internal build-in CCD provides all in one CCTV solution
- Remote Surveillance Through Internet or Intranet
- **Dual streaming MPEG4 & JPEG compression**
- Event triggered picture can be sent via FTP or E-mail
- System base on Java platform for better stability
- Remote recording
- PPPoE or DDNS support
- Video motion detection
- **Support 3Gpp service**
- **Easy set up with UPnP support**
- Audio
- Day Night Function With ICR Filter Mechanism (option)
- Support Maxi-Watch Professional IP software, multiple IP brands include FINE, AXIS, ACTI, Panasonic, Sony, D-Link, Lumenera, Mobotix, PIXORD, Vivotek and JVC, Dual monitor display, SMART Analysis such as missing object, foreign object, lose focus, camera occlusion etc...(option). For complete information, please refer to page 17
- Free Bundle Basic 36 Channel Recording Software Provided
- CMS Support (option)
- SDK for software integration provided upon customer request

Technical Specifications

Model	TCP-690U	TCP-690DNU
CCD Sensor	1/3" SONY Super HAD CCD	
Pixel Resolution (H x V)	NTSC: 768 x 494 PAL: 753 x 582	
Horizontal Resolution	540 TVL	
Day & Night Function	Color	Color to monochrome switched by ICR Cut Filter
Lens	CS Mount (Support DC Driver)	
Resolution	Full D1 (NTSC: 720x480 PAL: 720x576) VGA: (NTSC: 640x480 PAL: 704x576) CIF: (NTSC: 320x240 PAL: 352x288) QCIF: (NTSC: 160x120 PAL: 176x144)	
Video Control	Automatic Gain Control(On /Off) Auto Electronic Shutter (On/Off) Back Light Compression (On/Off)	
Video Adjustment	Quality, Brightness, Contrast Level adjustment	
Network Interface	Ethernet (10/100Base-T)	
Video Compression	Dual Streaming (MPEG4 / M-JPEG)	
Audio Compression	PCM	
Hardware	CPU:32 bites RISC Processor ROM: 4M Bytes Flash ROM RAM: 16M Bytes SDRAM Two LEDs: network and power / system status indication RJ-45: for Ethernet Mini-D: 4 sets pf GPIO relay Auto IRIS Output BNC video Output	
Performance	Up to 30/NTSC: Up to 25 / PAL Single video more than 8 connections simultaneously	
Protocols	TCP/IP, ICMP, HTTP, FTP, SMTP, DDNS, PPPoE	
Event Trigger & Action	Triggered by Motion Detection Action: Store image to internal buffer FTP: AVI to remote site E-mail AVI to specific account	
IP Assignment	Static IP, DHCP, PPPOE, IP Installer	
System Requirement	Microsoft IE4.x or above, Running on Windows 98/ME/2000/XP/2003	
Firmware Upgrade	Through HTTP mode	
Security	3 layers password protection	
Operating Temperature	-5°C ~ 50°C	
Input Voltage	DC 12V, 1A	
Power consumption	Lower than 8 Watts	
Dimension (W x H x D)	125 x 53 x 60	
Weight	350g	

► Specifications are subjected to change without prior notice.

IP Camera



[TCP-HPC930U](#)
[TCP-HPDN930U](#)



[TCP-HPC930WIU](#)
[TCP-HPDN930WIU](#)

Key Features

- High definition 540TV Lines with 1/3" Sony Super Had CCD technology
- Supreme day & night function with automatic ICR filter TCP-HPDN930U, TCP-HPDN930WIU
- Auto IRIS control, auto white balance, back light compensation available
- **Dual streaming MPEG4 & JPEG compression**
- Remote Surveillance through Internet or Intranet
- Event triggered picture can be sent via FTP or E-mail
- PPPoE or DDNS support
- Video motion detection
- **Support 3Gpp service**
- **Easy set up with UPnP support**
- Two way audio integration
- POE (option)
- Support Maxi-Watch Professional IP software, multiple IP brands include FINE, AXIS, ACTi, Panasonic, Sony, D-Link, Lumenera, Mobotix, PIXORD, Vivotek and JVC, Dual monitor display, SMART Analysis such as missing object, foreign object, lose focus, camera occlusion etc...(option). For complete information, please refer to page 17
- Free Bundle Basic 36 Channel Recording Software Provided
- CMS Support (option)
- SDK for software integration provided upon customer request

Technical Specifications

Model	TCP-HPC930U TCP-HPC930WIU (Wireless)	TCP-HPDN930U TCP-HPDN930WIU (Wireless)
CCD Sensor	1/3" SONY Super HAD CCD 1/3" SONY Exview CCD (option)	
Pixel Resolution (HxV)	NTSC: 771 x 492 , PAL: 752 x 582	
D/N Mode	-n/a-	Yes, with IR Cut
Horizontal Resolution	540 TVL	
Lens	CS Mount (Support DC Driver)	
Resolution	Full D1, 4CIF, CIF, QCIF	
Video Control	Automatic Gain Control (On/Off) Auto Electronic Shutter (On/Off) Back Light Compression (On/Off)	
Video Adjustment	Quality, Brightness, Saturation, Hue	
Network Interface	Ethernet (10/100Base-T) RJ-45 connector	
Video Compression	MPEG4 and JPEG	
Hardware	CPU:32 bites RISC Processor ROM: 64M Bytes Flash ROM RAM: 8M Bytes	
Performance	Up to 30/NTSC: Up to 25/PAL	
Audio	2 way audio	
Alarm I/O	2 in /2 out	
Simultaneous User	Up to 10 users	
Protocols	TCP/IP, HTTP, FTP, SMTP, NTP, DDNS, PPPoE, UPnP	
Event Trigger & Action	Triggered by Motion Detection Action: Store image to internal buffer FTP: AVI to remote site E-mail AVI to specific account	
IP Assignment	Static IP, DHCP, PPPOE, IP Installer	
Security	Password protection configurable	
Firmware Upgrade	HTTP mode, firmware can be upgraded remotely	
Back Up	SD back up	
Video Format	AVI, JPEG	
SDK	Provided upon request for integration	
System Requirement	Microsoft IE6.x or above, Running on Windows 2000 / XP	
Operating Temperature	-5°C ~ 50°C	
Input Voltage	DC 12V, 1A	
Power consumption	Lower than 8 Watts	
Dimension	145.26(L) x 65.5(W)	
Weight	450g	

► Specifications are subjected to change without prior notice.

Megapixel IP Camera



TCP-M912C
TCP-M912DN



TCP-M912CW
TCP-M912DNWI

Key Features

- 1.3 Mega Pixel
- Supreme Day & Night function with automatic ICR Filter mechanism
- Dual streaming MPEG4 & JPEG compression
- Built in Power over Ethernet for less cabling and consolidated power
- Video motion detection
- Support 3Gpp service
- Easy set up with UPnP support
- Expansion SD back up for data storage (Option)
- Support Maxi-Watch Megapixel IP software, multiple IP brands include FINE, AXIS, ACTI, Panasonic, Sony, D-Link, Lumenera, Mobotix, PIXORD, Vivotek and JVC, Dual monitor display, SMART Analysis such as missing object, foreign object, lose focus, camera occlusion etc...(option). For complete information, please refer to page 17
- CMS Support (option)
- SDK for software integration provided upon customer request

Technical Specifications

Model	TCP-M912C (Color) TCP-M912DN (Day & Night)	TCP-M912CW (Color, Wireless) TCP-M912DNWI (Day & Night, Wireless)
Sensor Type	1/3" SONY Progressive CCD	TCP/IP
Effective Pixels	Full scan mode: 1280x960, center cut-off mode: 640 x 480	- PPPoE
Electronic Shutter	1/10000	--User ID
Sensitivity	Min 370mV, Typical 460mV	--User Password
Electronic Zoom	1/8 ~ 12x	Primary DNS Address
AGC (Auto gain control)	Yes	Secondary DNS Address
AWB (Auto white balance)	Yes	Dynamic DNS
AE (Auto exposure)	Yes	UPnP
Lens Mount	CS-mount	Users
Analog		Three levels
Signal	NTSC/PAL (switch)	Administrator / Viewer
Scanning Frequency	36Mhz (NTSC), 29Mhz (PAL)	Date/ Time Setting
Noise	Up to 0.5V	Date: Year / Month / Day
Minimum Illumination	0.6 Lux	Time: Hour / Minute / Second
Video		NTP Protocol
Video Compression	MPEG4 / JPEG (dual codec simultaneously)	NTP Server Address: Adjusting frequency
Video Frame Rate	Full scan mode: MPEG4 15fps@VGA, MJPEG 12.5@1280 x 960	Time Zone
	Center cut-off mode: MPEG4 30fps@VGA, MJPEG 30fps@VGA	Video
Compression Rate Selection	5 levels: best, better, normal, faster, fastest	Compressing Rate
Frame Rate	Configurable	5 levels: best, better, normal, faster, fastest
Video Resolution	MPEG4: QCIF, CIF, VGA	Frame Rate
	MJPEG: QCIF, CIF, VGA, Quad-VGA (full scan mode)	Adjustable
Image Rotation	Flip, Mirror	Video Resolution
Digital Zoom (software)	Yes, 100%~400% (zoom out at any point)	QCIF, CIF, VGA, Quad-VGA (full scan mode)
Digital Pan/Tilt	Yes	Image Rotation
Motion Detection	Yes (3 windows)	Mirror, flip
OSD	Text, Time, and Date configurable transparency	Digital Pan / Tilt / Zoom
Audio		Yes
2-way Audio	Yes (half duplex)	Brightness Control
Audio Codec	ADPCM	Yes
Communication		Saturation Control
LAN Port	RJ-45, 10/100M/1G auto-sensed, auto crossover	Yes
Protocol	HTTP, RTSP, FTP, SMTP, TCP/IP, UDP, ARP, ICMP, DHCP, PPPoE, DDNS, UPnP	Contrast Control
I/O		Yes
Alarm Input	2	Sharpness Control
Alarm Output	2	Yes
High Sensitivity Microphone	Embedded x 1	Backlight Control
Analog Audio Output	1x3.5mm jack	Yes
LED	Status, network link	White Balance Control
Software		Yes
Browser	Internet Explorer 6.0 or above	Upload Configuration
Application Software	CentaView application software	FTP
OS supported	Microsoft Windows 2000, XP, Vista	SMTP
Software Features		Dynamic DNS
System	Name	Service
	Location	User Name
	Admin ID and Password	Password
TCP/IP	Static IP Address	Domain Name
	- IP Address	Motion Detection
	- Subnet Mask	Motion Sensitivity
	- Default Gateway	Sends video e-mail when motion is detected
	Dynamic IP Address	Uploads video to ftp server when motion is detected
	- DHCP	Triggers alarm out when motion is detected
		Motion mask is easily set
		Alarm Detection
		Sends video e-mail when alarm is detected
		Uploads video to ftp server when alarm is detected
		Triggers alarm out when alarm is detected
		Triggered Actions
		Send video e-mail
		Upload video file to ftp server
		Send notification to TCP/HTTP server
		Turn on alarm output
		Open API
		CGI commands to control camera
		Media SDK to handle streaming
		Others
		Factory Reset to default setting.
		Power
		Power
		DC12V, 6W
		Size
		Dimensions (W x H x D)
		145.26mm(L) x 65.50mm(W)
		Operating environment
		Operating temperature
		0°C ~ 50°C
		Storage temperature
		-20°C ~ 50°C
		Humidity
		10% ~ 80% non-condensing
		Weight
		350g

► Specifications are subjected to change without prior notice.

IP Wide Dynamic Camera



Key Features

- 1/3" Double Density Sony CCD
- Wide Dynamic Range
- High Resolution 540TVL Lines
- Day & Night Function: ON / OFF
- Remote Surveillance Through Internet or Intranet
- Dual streaming MPEG4 & JPEG compression
- Event triggered picture can be sent via FTP or E-mail
- Free Bundled Basic 36 channel AP Client Software Provided
- Support Maxi-Watch Professional IP software, multiple IP brands include FINE, AXIS, ACTi, Panasonic, Sony, D-Link, Lumenera, Mobotix, PIXORD, Vivotek and JVC, Dual monitor display, SMART Analysis such as missing object, foreign object, lose focus, camera occlusion etc...(option). For complete information, please refer to page 17
- Central Management Software (optional)

Technical Specifications

Model	TCP-IPWD690
CCD Sensor	1/3" Vertical Double Density Interline CCD Image Sensor
Pick up Elements	752(H) x 582(V) PAL
Horizontal Resolution	540TVL
H.Sync. Frequency	NTSC: 15.734 KHz PAL: 15.625 KHz
V. Sync. Frequency	NTSC: 59.94 Hz PAL: 50 Hz
Scanning System	2:1 Interlace
Minimum Illumination	0.05 Lux (F1.2)
Synchronization	Internal / Line lock
S/N Ratio	More than 50dB (AGC Off)
Wide Dynamic Range	128X
Wide Dynamic Function	On / Off Switchable
Auto Electronic Shutter	On/off Switchable ; Range 1/50 (1/60) up to 1/100,000 sec
Day & Night Function	ON / OFF Switchable
Gain Control	Auto
INT / LL Function	Internal / Line lock Switchable
Lens	CS Mount
Resolution	Full D1 (NTSC: 720 x 480 PAL: 720 x 576) VGA (NTSC: 640 x 480 PAL: 704 x 576) CIF (NTSC: 320 x 240 PAL: 352 x 288) QCIF (NTSC: 160 x 120 PAL: 176 x 144)
Video Control	Automatic Gain Control (On /Off) Auto Electronic Shutter (On /Off) Back Light Compression (On /Off)
Video Adjustment	Quality, Brightness, Contrast Level adjustment
Network Interface	Ethernet (10/100Base-T)
Video Compression	Dual Streaming (MPEG4/M-JPEG)
Audio Compression	PCM
Hardware	CPU: 32 bites RISC Processor ROM: 4M Bytes Flash ROM , RAM: 16M Bytes SDRAM Two LEDs: network and power / system status indication RJ-45: for Ethernet , Mini-D: 4 sets pf GPIO relay Auto IRIS Output , BNC video Output
Protocols	TCP-IP, ICMP, HTTP, FTP, SMTP,DDNS, PPPoE
Event Trigger & Action	Triggered by Motion Detection Action: Store image to internal buffer FTP: AVI to remote site E-mail AVI to specific account
IP Assignment	Static IP, DHCP, PPPoE, IP Installer
System Requirement	Microsoft IE4.x or above, Running on Windows 98/ME/2000/XP/2003
Firmware Upgrade	Through HTTP mode
Security	3 layers password protection
Video Output	1Vp-p, 75 ohms
Power Supply	Dual Power DC 12V / AC24V
Power Consumption	240mA at DC 12V, 3W at AC24V
Auto White Balance	2000°K ~ 11000° K
Dimension	125(L) x 53(W) x 52(H) mm
Weight	290 g
Storage Temperature	-10°C + 60°C
Operation Temperature	-10°C + 45°C

► Specifications are subjected to change without prior notice.

Megapixel IP Camera



Coming Soon

Key Features

- 1.3 Megapixel progressive CCD sensor
- 600 TVLines
- Dual code (MPEG - 4/ MJPEG) simultaneously
- 56 pieces IR-LED
- 2-way audio support
- Weatherproofing criterion IP 66
- Support Maxi-Watch Professional IP software, multiple IP brands include FINE, AXIS, ACTi, Panasonic, Sony, D-Link, Lumenera, Mobotix, PIXORD, Vivotek and JVC, Dual monitor display, SMART Analysis such as missing object, foreign object, lose focus, camera occlusion etc...(option). For complete information, please refer to page 17

Technical Specifications

Model	TMP-IR900
Image system	
Image sensor	1/3" SONY progressive transfer CCD
Resolution	Full scanning mode:1280 (H) X 960 (V)
Image compressor	Motion JPEG/ MPEG-4
Image frame rate	Motion JPEG : SXVGA 1280 X 960 @15 fps MPEG-4 : VGA 640x 480 @30fps
Video output	One BNC for VGA composite video (PAL/NTSC) switch
Electric	
Sync system	Internal
Lens mount	CS Megapixel lens
Gamma correction	0.45
White balance	2500K~10000K
Electric shutter	1/60~1/10,000
BLC	ON/Off
Minimum illumination	0 Lux in 40 meter
Infrared luminary	56 pieces IR-LED
Wavelength	850nm
Illumination distance	40 Meters
Illumination active limit	5 Lux
Audio	2-way audio support (option)
Alarm in / out	Yes
SD card slot	Yes (option)
Motion detection	Yes
LENs (optional)	
Focal length	12mm Fixed lens / 4 ~ 8mm (option)
Max. Aperture ratio	1 : 1.4
Operation range	Iris: F1.4 ~ F360 , Focus: 0.5m ~ Inf , Zoom: 4 ~ 8mm
Control	Iris: DC Auto Iris, Focus: Manual , Zoom: Manual
Angle of view (D/H/V)	115.9° ~ 58.8° / 90.4° ~ 47.0° / 67.0° ~ 35.3°
Software features	
System	Name
TCP/IP	Static IP address, Dynamic IP address, Primary DNS address, Secondary DNS address, Dynamic DNS
User	Administrator / Operator / Viewer
Date / Time setting	Date: year/month/day ; Time : hour/minute/second, NTP, Time zone
Video	Compressing rate: 5 level, Frame rate: adjustable Video resolution: QCIF / CIF / VGA / SXVGA, Brightness control: (0~100 step 2) Saturation control: (0~100 step 2), Contrast control: (0~100 step 2) Sharpness control: (0~100 step 2), Flickerless control: (0~100 step 10), Backlight control: (0~100 step 10)
Upload configuration	FTP, SMTP
Event Management	schedule / trigger / action
Others	Factory reset to default setting
OS supported	Microsoft Windows 2000 / XP / Vista
Network	
Ethernet	1 x 10/100 base-T Ethernet connection for LAN
Internet protocol	TCP/IP, UDP/IP, HTTP, SMTP, DNS, DHCP, NTP, ARP, ICMP, syslog, DDNS, RNCIP, FTP
Security	Multiple password for user to login
Control interface	IE browser 6.0 or above
Audio	
2-way audio	Yes (Full duplex)
Audio codec	G.711 / G.726 selectable
I/O connector	
Network port	RJ45 with LEDs
Video port	BNC
GPIO	alarm in x 1 / alarm out x 1 (terminal)
RS232	Yes (terminal)
Audio in & out port	Phone Jack
Power supply	
Power requirement	DC12V / 1.5A
Environment	
Operating temperature	0°C ~ 50°C
Operating humidity	30% ~ 80%
Storage temperature	-20°C ~ 60°C
Mechanism	
Weight	75g
Dimensions	38.5mm x 48mm x 48.8mm

► Specifications are subjected to change without prior notice.

IP Vandal Dome



[CDV-3F930MU](#)
[CDV-3F930HU](#)



[CDV-3V930MU](#)
[CDV-3V930HU](#)



[CDV-3V930HDNU](#)
[CDV-3V930HDN/EXU](#)

Key Features

- Produce high quality video images with 420 TVL or 540 TV Lines horizontal resolution
- Choice of Sony Super Had CCD or Sony Exview CCD
- Unique design with weatherproof IP66 rated housing
- Compact vandal resistant construction
- Dual streaming MPEG4 & JPEG compression
- Suitable for indoor & outdoor use with roof dome cover
- Support 3Gpp service
- Easy set up with UPnP support
- DSP controls for BLC, white balance and gain control
- Day & night switchable with ICR mechanism for CDV-3V930HDNU, HDN/EXU
- Burglarproof screw
- POE (Option)
- Support Maxi-Watch Professional IP software, multiple IP brands include FINE, AXIS, ACTi, Panasonic, Sony, D-Link, Lumenera, Mobotix, PIXORD, Vivotek and JVC, Dual monitor display, SMART Analysis such as missing object, foreign object, lose focus, camera occlusion etc...(option). For complete information, please refer to page 17
- Free Bundle Basic 36 Channel Recording Software Provided
- CMS Support (option)
- SDK for software integration provided upon customer request

Technical Specifications

Model	CDV-3V930HDNU CDV-3V930HDN/EXU	CDV-3V930MU CDV-3V930HU	CDV-3F930MU CDV-3F930HU
CCD Device	1/3" SONY SuperHAD CCD 1/3" SONY Exview HAD CCD for CDV-3V930HDN/EX		
Effective Pixels	PAL: 752 (H) x 582 (V) NTSC: 771 (H) x 492 (V)	CDV-3V930HU for PAL: 752(H)x582(V) CDV-3F930HU for NTSC: 768(H)x494(V)	CDV-3V930MU for PAL: 500(H)x582(V) CDV-3F930MU for NTSC: 510(H)x492(V)
Horizontal Resolution	Color: 540 TVL B/W: 600 TVL	420 TVL for CDV-3V930M-U, CDV-3F930M-U 540 TVL for CDV-3V930H-U, CDV-3F930H-U	
Minimum Illumination	0.01 Lux F1.2 with SONY SuperHAD CCD 0.003 Lux F1.2 with SONY Exview HAD CCD for CDV-3V930HDN/EX		
Lens	3.7-12mm Varifocal DC Iris Lens	4-9mm Varifocal DC Iris Lens	3.6mm (standard), 4.3mm, 6mm, 8mm, 12mm (option)
Day Night Function	Yes, automatic switchover from color to monochrome by Mechanical IR cut Filter	Not available	
LEDS	12 pieces	Not available	
IR Range Distance	12M	Not available	
Synchronization	Internal		
S/N Ratio	Better than 50dB (AGC OFF)		
Video Out	1Vp-p with 75 ohm loading, BNC connectors		

System Specification

Image Display Rate	Full D1 Resolution PAL 25 FPS, NTSC 30 FPS
Picture Resolution	Full D1, 4CIF, CIF, QCIF
Video Adjustment	Brightness, Contrast, Saturation, Hue
CCD Setting	BLC
Image Snapshot	Yes
Full Screen Monitoring	Yes
Compression Format	MPEG 4 and JPEG
Pre-Post Alarm	Configurable
Security	Password Protection configurable
Firmware Upgrade	HTTP mode, firmware can be upgraded remotely.
Simultaneous User Connections	Up to 10 users
Audio	2 way
Ethernet	LAN /WAN Port 10/100 Base - T RJ45 connector
Network Protocol	HTTP, TCP/IP, SMTP, FTP, PPPoE, DHCP, DDNS, NTP, UPnP
Alarm I/O	1 in/ 1 out (RELAY)
RS485	Yes
Back Up	SD Back Up
Video Motion Detection	Yes (3 windows)
Video Format	AVI, JPEG
Video Playback	Yes
Delete Files	Yes
Web Browser	Microsoft Internet Explorer 6.0 or above
OS	Windows 2000, XP, 2003
Hardware Requirement	Suggested: Intel-C 2.0G, RAM: 512MB, Graphic Card: 64MB Minimum: Intel-C 1.6G, RAM: 256MB, Graphic Card: 32MB
Remote Software	Free Bundled 16 channel remote monitoring and recording software
SDK	Provided upon request for integration
Power Requirement	DC12V±10%
Power Consumption	1Ampere, 6W
Operating Temperature	-5°C - +60°C
Dimension	H: 93.7mm x 137
Weight	800g

► Specifications are subjected to change without prior notice.

Weatherproof IP Camera



Coming Soon

Key Features

- Super high-resolution 540TVL
- True Day/Night Function ~ Removable IR Cut Filter (ICR) (optional)
- IR Distance 50M
- MPEG-4/MJPEG Compression Format
- SD Card backup
- 2-way audio
- Support cell phone / PDA / 3GPP
- Dual Streaming
- Support Maxi-Watch Professional IP software, multiple IP brands include FINE, AXIS, ACTi, Panasonic, Sony, D-Link, Lumenera, Mobotix, PIXORD, Vivotek and JVC, Dual monitor display, SMART Analysis such as missing object, foreign object, lose focus, camera occlusion etc...(option). For complete information, please refer to page 17
- Free Bundle Basic 36 Channel Recording Software Provided
- CMS Support (option)
- SDK for software integration provided upon customer request

Technical Specifications

Model	TCP-Q650V	TCP-Q692V
Hardware		
CPU	ARM 9 ,32 bit RISC	
RAM	64MB	
ROM	8MB	
Image sensor	1/3 " sony CCD	
Sensitivity	0 lux (IR On)	
Horizontal Resolution	540 TVL	
Lens Type	50M Vari-focal auto iris 5~50 mm	40M Vari-focal auto iris 9~22 mm
ICR	Removable IR Cut Filter	
LED	E-Power LED Built-in (IR distance: 50M)	
Video Out	1 (terminal type)	
I/O	1 in/ 1 (relay out)	
Audio in	1 (terminal type)	
Audio Out	1 (terminal type)	
Power Consumption	AC 90~260V/17W (+/- 10%)	
Dimensions	140mm(W) x 143mm(L) x 373mm(H)	
Weight	1800g	
Network		
Ethernet	10/ 100 Base-T	
Network Protocol	HTTP, TCP/ IP, UDP, SMTP, FTP, PPPoE, DHCP, DDNS, NTP, 3GPP, UPnP	
Wireless	802.11 b/g (Optional)	
Wep	64/128 bit	
System		
Video Resolution	NTSC: 720x480, 704x480, 352x240, 176x120 PAL: 720x576, 704x576, 352x288, 176x144	
Video adjust	Brightness, Contrast, Saturation, Hue	
Dual Streaming	Yes	
CCD setting	AGC(Auto), Day/Night (Auto)	
Image snapshot	Yes	
Full screen monitoring	Yes	
Compression format	MPEG-4 / MJPEG	
Video bitrate adjust	CBR, VBR	
Motion Detection	Yes, 3 different areas	
Triggered action	Mail, FTP, Save to SD card	
Pre/ Post alarm	Yes, configurable	
Security	Password protection	
Firmware upgrade	HTTP mode, can be upgraded remotely	
Simultaneous connection	Up to 10	
Audio	Yes, 2-way (Duplex Support)	
SD card management		
Recording trigger	Motion Detection, IP check Network status (wire connection only)	
Video format	AVI, JPEG	
Video playback	Yes	
Delete files	Yes	
Client system requirements		
OS	Windows 2000, XP, 2003, Microsoft IE 6.0 or above	
Hardware		
Suggested	Intel-C 2.0G, RAM: 512MB, Graphic card: 64MB	
Minimum	Intel-C 1.6G, RAM: 256MB, Graphic card: 32MB	

► Specifications are subjected to change without prior notice.

IP PTZ Network Camera



Key Features

- Remote Pan (270°) / Tilt (120°) / Zoom (12xopt) Control
- IR Cut Filter (ICR)
- MPEG4 / JPEG Compression format
- SD Card back up
- 2 way audio
- Support cellphone / PDA / 3GPP
- Dual Streaming MPEG4 & JPEG compression
- SDK for software integration
- Wireless (option)
- Free Bundle Basic 36 Channel Recording Software Provided
- Support Maxi-Watch Professional IP software, multiple IP brands include FINE, AXIS, ACTi, Panasonic, Sony, D-Link, Lumenera, Mobotix, PIXORD, Vivotek and JVC, Dual monitor display, SMART Analysis such as missing object, foreign object, lose focus, camera occlusion etc... (option). For complete information, please refer to page

Technical Specifications

Model	MD-D1200	MD-D1200WI (Wireless)
CCD Sensor	1/4" CCD	
Lens Type	Auto focus zoom lens	
Video Resolution	NTSC: 720 x 480, 704 x 480, 352 x 240, 176 x 120 , PAL: 720 x 576, 704 x 576, 352 x 288, 176 x 144	
Zoom Ratio	12x Optical zoom	
Focal Length	F(wide) 3.8 mm to f(tele) 45.6 mm	
Maximum Aperture	F(wide)= 1:1.6, F (tele)= 1:2.7	
Angle View (H,V)	Wide: 52.8°, 39.7°, Tele: 4.49°, 3.40°	
Pan Angle	270°	
Tilt Angle	120°	
Pan/ Tilt ?Zoom control	Yes, remotely	
Preset Point	9	
Patrol / Auto Pan	Yes (once)	
Sensitivity	0.1 Lux F1.6	
Electronic Shutter	1/50 (1/60) ~ 1/100000s	
White Balance Mode	ATW, AWB, Indoor, Outdoor	
Video adjust	Brightness, Contrast, Saturation, Hue	
Video Out	1 (RCA type)	
Alarm I/O	1 in / 1 out	
Audio in / out	1 in / 1 out (2.5 mm Phone Jack)	
Audio	Yes, 2 Way (Duplex Support)	
Dual Streaming	Yes	
Image snapshot	Yes	
Full screen monitoring	Yes	
Compression format	MPEG-4 / MJPEG	
Video bitrate adjust	CBR, VBR	
Motion Detection	Yes, 3 different areas	
Triggered action	Mail, FTP, Save to SD card	
Pre/ Post alarm	Yes, configurable	
Security	Password protection	
Firmware upgrade	HTTP mode, can be upgraded remotely	
Simultaneous connection	Up to 10	
Ethernet	10 / 100 Base-T	
Wireless (option)	802.11b/g (optional)	
Network Protocol	HTTP, TCP/ IP, UDP, SMTP, FTP, PPPoE, DHCP, DDNS, NTP, 3GPP, UPnP	
SD card management		
Recording trigger	Motion Detection, IP check Network status (wire connection only)	
Video format	AVI, JPEG	
Video playback	Yes	
Delete files	Yes	
Power Consumption	DC5V, Lan: 1.7A ; WLAN: 1.9A	
Dimensions	105mm(W) x 157mm(L) x 150mm(H)	
Weight	550g	

► Specifications are subjected to change without prior notice.

1 CH Camera Server



[WB-8211SD/WU](#)



[WB-8211SDU/W](#)

Key Features

- Support Full D1 Resolution (NTSC:720 x 480, PAL: 720 x 576)
- Real-time display up to 30FPS/NTSC, 25FPS/PAL with D1 resolution
- Dual streaming MPEG4 & MJPEG compression
- Support On-line firmware upgrade
- Support network On-live recording with AVI format which support Windows Media Player
- Support dynamic IP, PPPoE via free DDNS service
- Support RS-485 to control the speed dome
- SD Back Up for Data Storage Application
- Wired /Wireless Network
- 2 way audio function
- Support 3Gpp service
- Easy set up with UPnP support
- Support Maxi-Watch Professional IP software, multiple IP brands include FINE, AXIS, ACTI, Panasonic, Sony, D-Link, Lumenera, Mobotix, PIXORD, Vivotek and JVC, Dual monitor display, SMART Analysis such as missing object, foreign object, lose focus, camera occlusion etc...(option). For complete information, please refer to page 17
- Free Bundle Basic 36 Channel Recording Software Provided
- CMS Support (option)
- SDK for software integration provided upon customer request

Technical Specifications

Model	WB-8211SDU WB-8211SD/WU (Wireless)		
Hardware	CPU	ARM 9, 32 Bit RISC	
	RAM	64MB	
	ROM	8 MB	
	Video In / Out	1 In / 1 Out, BNC Connector	
	Audio In / Out	1 in / 1 Out	
	I/O	2 in / 2 Out	
	RS 485	1, for PTZ Control	
Network	Power Consumption	DC12V, 1 A, 4W	
	Ethernet	10/100 Base-T	
	Wireless (Optional)	802.11 b/g	
	WEP	64 / 128 Bit	
System	Network Protocol	HTTP, TCP/IP, SMTP, FTP, PPPoE, DHCP, DDNS, NTP, UPnP	
	Effective Pixels	Full D1, 4CIF, CIF, QCIF	
	Image Snapshot	Yes	
	Full Screen Monitoring	Yes	
	Compression Format	MPEG-4 / JPEG	
	Video Bitrate Adjustable	CBR, VBR	
	Motion Detection	3 different areas	
	Triggered Action	Mail, FTP, Save to SD Card	
	Pre / Post Alarm	Yes, configurable	
	Security	Password Protection	
	Firmware Upgrade	HTTP Mode which can be upgraded remotely	
	Simultaneous Connection	UP to 10	
	Audio	2 Way Audio	
	SD Card Management	Recording Trigger	Motion Detection, IP Check, Network Break Down (Wire Only)
		Video Format	AVI, JPEG
Video Playback		Yes	
Files Management		Yes, Can be deleted or over write	
Web Browsing Requirement	OS	Windows 2000, XP, 2003, Microsoft IE6.0 or Above	
	IE	6.0 or above	

► Specifications are subjected to change without prior notice.

4 CH Camera Server



[WB-8412W](#)



[WB-8412](#)

Key Features

- Support Full D1 Resolution (NTSC:720 x 480, PAL: 720 x 576)
- Real-time display up to 30FPS/NTSC, 25FPS/PAL with D1 resolution
- Dual Mode for WB-8411, WB-8411SD/W
- Support On-line firmware upgrade
- Support network On-live recording with AVI format which support Windows Media Player
- Support dynamic IP, PPPoE via free DDNS service
- Support RS-485 to control the speed dome
- USB back up for WB-8411, WB-8411 SD/W, SD Back up for WB-8412, WB-8412W
- Wired /Wireless Network
- 2 way audio function
- Support Maxi-Watch Professional IP software, multiple IP brands include FINE, AXIS, ACTi, Panasonic, Sony, D-Link, Lumenera, Mobotix, PIXORD, Vivotek and JVC, Dual monitor display, SMART Analysis such as missing object, foreign object, lose focus, camera occlusion etc...(option). For complete information, please refer to page 17
- Free Bundle Basic 36 Channel Recording Software Provided
- CMS Support (option)
- SDK for software integration provided upon customer request

Technical Specifications

Model		WB-8412 WB-8412SD/W (Wireless)
Hardware	CPU	ARM 9, 32 Bit RISC
	RAM	64MB
	ROM	8 MB
	Video In / Out	4 in / 4 out BNC Connector
	Audio In / Out	1 in / 1 Out
	I/O	1 in / 4 Out
	RS 485	1, for PTZ Control
Network	Power Consumption	DC12V, 1 A, 4W
	Ethernet	10/100 Base-T
	Wireless (Optional)	802.11 b/g
	WEP	64 / 128 Bit
System	Network Protocol	HTTP,TCP/IP, SMTP, FTP, PPPoE, DHCP, DDNS, NTP ,UPnP
	Effective Pixels	Full D1, 4CIF, CIF, QCIF
	Image Snapshot	Yes
	Full Screen Monitoring	Yes
	Compression Format	MPEG-4 /JPEG
	Video Bitrate Adjustable	CBR, VBR
	Motion Detection	4 areas (1 area per Channel)
	Triggered Action	Mail, FTP, Save to USB storage
	Pre / Post Alarm	Yes, configurable
	Security	Password Protection
	Firmware Upgrade	HTTP Mode which can be upgraded remotely
	Simultaneous Connection	UP to 10
	Audio	2 Way Audio
SD Card Management (WB-8412)	Recording Trigger	Motion Detection, IP Check, Network Break Down (Wire Only)
	Video Format	AVI, JPEG
	Video Playback	Yes
	Files Management	Yes, Can be deleted or over write
Web Browsing Requirement	OS	Windows 2000, XP, 2003, Microsoft IE6.0 or Above
	IE	6.0 or above

► Specifications are subjected to change without prior notice.

ICH Video Encoder / Decoder



Key Features

- MPEG4/ M-JPEG compression
- Video Server & Video Decoder
- Support SD card
- 2-Way Audio
- Wireless option

Technical Specifications

Model		EDH-01	EDH-01W
Hardware	CPU	ARM 9 ,32 bit RISC	
	RAM	64MB	
	ROM	8MB	
	Video in / Video Server	1-ch BNC type, (CBVS Camera input)	
	Video out / Video Decoder	1-ch BNC type (CBVS Monitor output)	
	Audio In / Out	1 in / 1 out (RCA type)	
	Alarm I/O	2 in / 4 out	
	RS 485	2-pin Terminal, for PTZ control	
	Power Consumption	DC 12V, 1A, 4W	
	Dimension (W x H x D)	133 x 42 x 107mm	
	Network	Ethernet	10 / 100 Base-T
Wireless (Optional)		802.11b/g	
WEP		64 / 128 bit	
Network Protocol		HTTP, TCP/ IP, SMTP, FTP, PPPoE, DHCP, DDNS, NTP	
Video Encoding	Video Resolution	NTSC: 720 x 480, 352 x 240, 176 x 120 , PAL: 720 x 576, 352 x 288, 176 x 144	
	Image snapshot	Yes	
	Full screen monitoring	Yes	
	Compression format	MPEG-4 / M-JPEG	
	Video bit rate adjust	CBR, VBR	
	Motion Detection	Yes, 3 different areas	
	Triggered action	Mail, FTP, Save to SD card	
	Pre/ Post alarm	Yes, configurable	
	Remote PTZ control	Yes	
Video Decoding	Video Output Resolution	D1 / VGA / CIF / QCIF	
	Decompression Format	MPEG4 / M-JPEG	
	TV Out	Yes	
	Output OSD	Yes	
	Stream Server	IP Camera, Video Server, DVR	
System	Security	Password protection	
	Firmware upgrade	HTTP mode, can be upgraded remotely	
	Simultaneous connection	Up to 10	
SD Card Management	Recording trigger	Motion Detection, IP check Network down (Wire connection only)	
	Video format	AVI, JPEG	
	Video playback	Yes	
	File Management	Yes, can be deleted or overwrite	
Web Browsing Requirement	OS	Windows 2000, XP, 2003, IE 6 or above	
	Suggested	Intel-C 2.0G, RAM: 512MB, Graphic card: 64MB	
	Minimum	Intel-C 1.6G, RAM: 256MB, Graphic card: 32MB	

► Specifications are subjected to change without prior notice.

Maxi Watch Professional Software

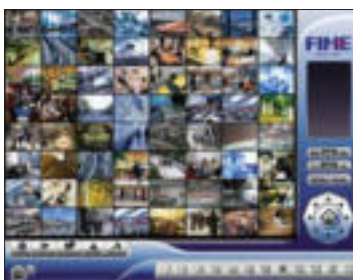
Key Features

- Recording dynamic or static live video synchronously with IP cameras up to 64 channels
- Support all series IP camera of FINE, Axis, ACTi, Panasonic, Sony, D-Link, Lumenera, Mobotix, PIXORD, Vivotek and JVC.
- Dual Monitoring live display and playback support
- Recording mode - continuous record, record by event, record by motion and record by schedule
- Recording time could be set and adjusted by user to fit in with the local law or the requirement of the organization.
- Support video smart analysis software such as Missing object, Foreign object, Lose focus, Cameras occlusion and Signal lost. Users could be alarmed by display on screen, Play sound, Send e-mail, Phone call, PTZ preset go and Signal digital output.
- Other servers in local network could install free user terminal software.
- Monitoring on condition of connection such as account, log in time, flow rate and IP address.
- Support the newest 3Gpp format service
- Counting application to count people or cars flow.
- User-friendly GUI interface recording schedule support
- Optional I/O integration for alarm control
- Maxi Watch Megapixel TCP-Plus software support (option) with Megapixel brands include Arecont Vision, Axis, IQinvision, Level One Lumenera, Mobotix and Vivotek
- Remote access via web browser

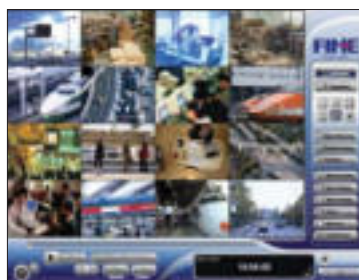


Technical Specifications

Description	Maxi Watch IP Software (TCP-XP) Maxi Watch Megapixel Software (TCP-PLUS) Maxi Watch Hybrid Software (CP-XP)				
	4 channel	8 channel	16 channel	32 channel	64 channel
Number of camera	4 channel	8 channel	16 channel	32 channel	64 channel
Audio support	Max. 64 Audio In				
Monitoring Mode	1/4/6/9/10/13/16/ Ntype (25,36,49,64) divided screen				
Camera Display	Rotation Window, Dual Monitor Display support				
Recording Mode	Continuous recording Record by Event Record by schedule Record by motion Record with Audio Auto Recycle support				
Recording FPS	30 FPS				
Video Analytics	General motion, Missing object, Foreign object, Lose focus, Counting Application				
Alerting	Email, Phone call, Sound playing, IO control, Alert on screen, PTZ preset go				
Playback	Simultaneous Playback 16 Channel Regular Playback Mode Search Mode With Analytic Feature Video Enhancement Tool Supported				
Remote	Remote Live View Client 16 Channel Remote Playback Client 16 Channel IE Browser Client				
User Account	Password restriction on user rights				



Live



Playback



I.E

Video Smart Intelligence Software



General Motion

Help users to monitor motions and can pinpoints subjects in defined area that detected intruders and trigger alarm



Camera Occlusion

Automatically detects if unidentified personal block cameras lens in an area to deter any vandalism, and alarms activated when any of the cameras is blocked



Missing Object

When an objects has been removed, missing from a detected zone, it will detects and identified to prevent Crime



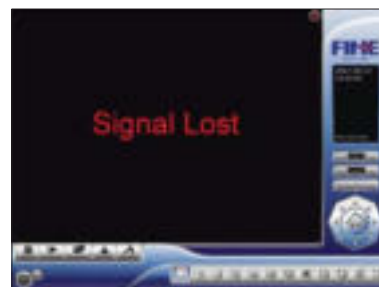
Foreign Object

It can detects objects such as unidentified suitcase, Baggage appeared in area to help security people to Take actions on potentially threat and damages



Lose Focus

When camera has been tore down, blurred pictures occurred for long period, it will show focus lose in the camera channel to alarm the user



Signal Lost

Automatically detects poor signals or signals lost from camera operation under surveillance to create seamless monitoring environment for best management



Counting Application

It can mark up two areas and count objects from in and out direction to monitor flow of movement in detected zone.



Multiple IP Brands Support

H.264 DVR Capture Card



CP-3004



CP-3008



CP-3016

Key Feature

- Featuring most advanced arithmetic H.264 Hardware video compression
- Real Time live surveillance up to 64 channels video, audio recording
- Built in Hybrid function can be connected IP cameras provided by license key pro (option)
- Dual monitor display
- Smart motion detection support
- Remote viewing and remote instant playback via software or IE
- Support TCP/IP, PPPoE and DHCP via router
- Embedded smart guard system to detect events notification actions
- Intelligent video management like object missing, foreign object and counting application
- Normal recording / motion recording/event recording
- SATA or IDE interface HDD, CD-RW or DVD-RW back up
- Support NAS or USB external storage
- Plug & Play, Windows operation system installation required (window 2000/XP)
- Friendly Graphic User Interface (GUI)
- Optional GPIO alarm control, voice call or phone call alert notification
- Snapshot Images Through E-mail when Alarm is Triggered
- Support PTZ Speed Domes Control
- Support 3GPP PDA/Mobile surveillance
- MegaPixel IP camera support (option)

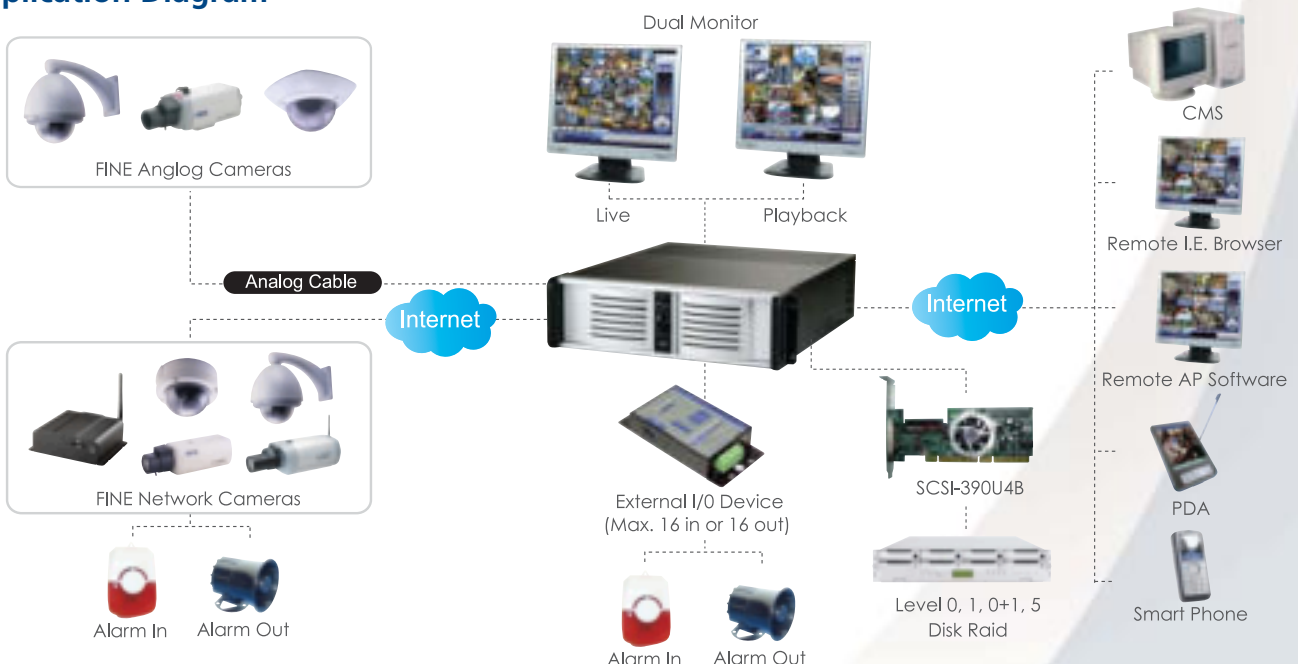
Technical Specifications

Model	CP-3004	CP-3008	CP-3016
Video Input	4	8	16
Audio Input	4	8	16
Sensor Input / Relay Output	4 in / 4 out		
Compression Standard	H.264		
VGA Output	24 Bit True Color		
Display (NTSC/PAL)	120 fps, 100 fps	240 fps, 200 fps	480 fps, 400 fps
Maximum Video Recording Frame Rate (CIF, NTSC/PAL)	120 fps, 100 fps	240 fps, 200 fps	480 fps, 400 fps
Communication Protocols	TCP/IP, PPPoE, DHCP via router		
Back Up Function	Internal IDE or SATA Hard Disk or SCSI /USB Interface HDD / CDR-W / DVD-RW		
Language	English / Traditional Chinese / France/ Germany / Russian/ Spain		
Redundant Power Supply	100V ~ 240VAC Full Range		

► Specifications are subjected to change without prior notice.

For Hybrid integration, please refer to license key pro of Maxi Watch Hybrid Software upon order request

Application Diagram



H.264 Multi-tasking Network DVR For High Density Recording & Management



DVX-9000HC SERIES

Key Characteristics

- D1 (704 x 576) Hardware Compression H.264 Encoding
- Real Time Live Surveillance
- Real Time Audio and Video Recording
- Full Screen, 1 / 4 / 6 / 9 / 10 / 16 Split-Screen Display
- Agility Motion Detection Support
- Support TCP/IP, PPPoE and DHCP
- Support NAS or USB external storage
- SATA or IDE interface HDD, CD-RW or DVD-RW back up support
- Remote viewing and remote playback via software
- Operation systems is Windows XP
- Hardware Watchdog support for automatic failure recovery

Key Feature

Video & Audio Recording

- H.264 Video Compression Standard
- Build-in Channel Switching (QUAD) Function for local CCTV Monitoring
- Support PTZ Speed Domes Control
- Embedded Digital Video Recorder & Remote Video Server
- Friendly Graphic User Interface (GUI)
- User Selectable of Full Screen, 1 / 4 / 6 / 9 / 10 / 16 Split-Screen Display

Alarm Function

- Automatic Alarm Notification
- Snapshot Images Through E-mail or Signal Digital Output When Alarm is Triggered
- Voice Call or Phone Call Alert Notification
- Optional GPIO Alarm Control

Network

- Need Remote Software to Viewing and Playback
- Dynamic IP Support
- Direct Dial Up available and Low-bandwidth Support
- Alarm Triggering / Motion Detection / Continuous Recording / Schedule Recording

Recording & Back Up Function

- SCSI / USB/ IDE Raid and NAS Storage System Support
- Supports External USB / Hard Disk / CDR-W Back Up
- Query Recorded Data By Date, Time, Triggered Events Provides Play / Stop / Pause / Forward & Backward Search Functions

System Requirement	
Hardware	Industrial Computer
CPU	Intel Core 2 Quad
Memory	2GB
Hard Disk Interface	SATA Hard Disk
Operation System	Windows XP System
Video Output	VGA
Ethernet Card	10/100/1000 MBPS
Video In	Max. Up to 32 Channels
Audio In	Max. Up to 32 Channels

Technical Specifications

Model	DVX-9004HC	DVX-9008HC	DVX-9016HC	DVX-9032HC
Video Input	4	8	16	32
Audio Input	4	8	16	32
Sensor Input / Relay Output	4 in / 4 out or 16in / 16 out			
Compression Standard	H.264			
VGA Output	24 Bit True Color			
Maximum Live Display Frame Rate	120 fps	240 fps	480 fps	640 fps
Maximum Video Recording Frame Rate (320x240)	120 fps	240 fps	480 fps	640 fps
Communication Protocols	TCP/IP, DHCP, PPPoE			
Back Up Function	Internal IDE or SATA Hard Disk or SCSI /USB Interface HDD / CDR-W / DVD-RW			
Language	English / Chinese / France/ Germany / Spain			
Redundant Power Supply	100V ~ 240VAC Auto Switch			
Size	51cm(L) x 45cm (W) x 38cm (H)			

► Specifications are subjected to change without prior notice.

NDVR System For Maximize IP & Analog Camera Recording and Management



Software Feature

- Windows Embedded operation system
- Operation System Software in DOM(Disk On Module)
- Up to 64 Channels Live surveillance
- Build in SATA Disk Raid Level 0, 1, 0+1, 5
- Screwless hot-swap tyays, fans
- Real Time video and audio recording
- Support TCP/IP, DDNS and DHCP via router
- Support NAS or USB external Device
- Remote Viewing and Playback via Web browser and AP software
- Support 3GPP Service
- Support alarm message through E-mail or phone call
- Maxi Watch Megapixel TCP-Plus software support (option) with Megapixel brands include Arecont Vision, Axis, IQinvision, Lumenera, Mobitix and Vivotek
- Embedded smart guard system to handle unusual events and instant notification actions
- GUI interface to setup recording schedule
- Support video smart analysis software such as Missing object, Foreign object, Lose focus, Cameras occlusion and Signal lost. Users could be alarmed by display on screen, Play sound, Send e-mail, Phone call, PTZ preset go and Signal digital output
- Dual monitor support for viewing live video and playback
- Printing and image/video export support
- Complete system and event log database
- Enables manual control ,preset and patrol of PTZ and dome camera
- Enable I/O connection on cameras

System Requirement

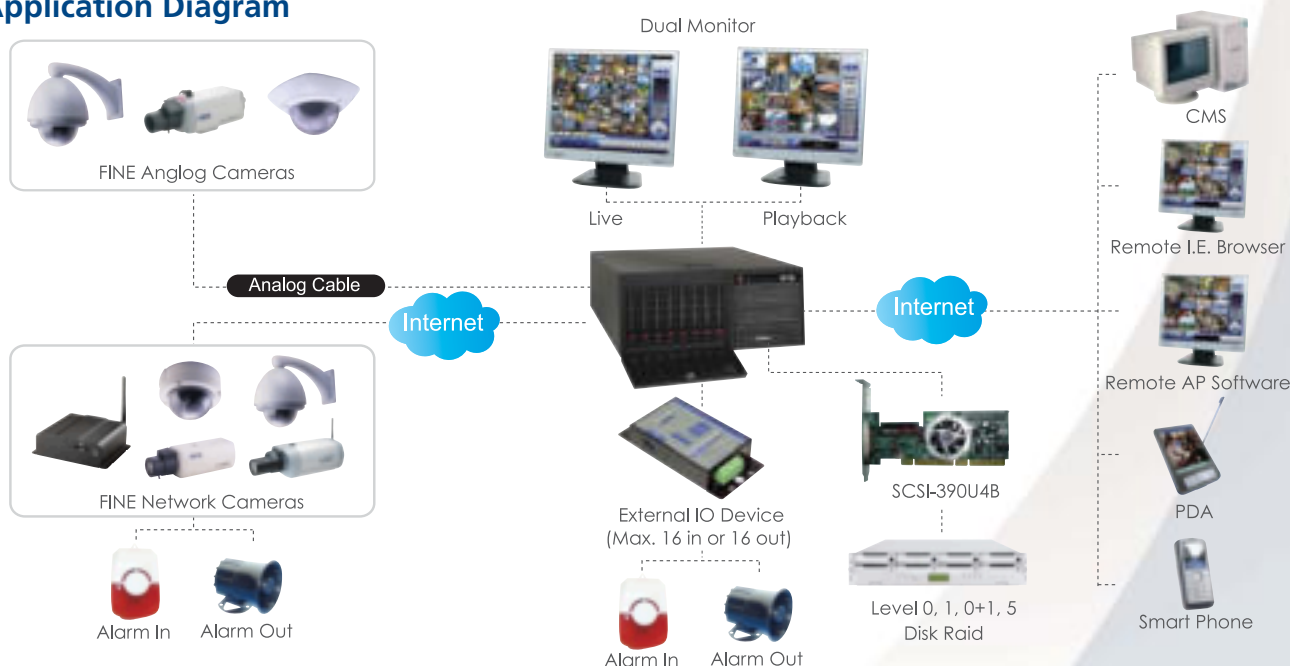
Hardware	Industrial Computer
CPU	Intel Core 2 Quad
Memory	2GB
Hard Disk Interface	SATA Hard Disk
Operation System	Windows Embeded System
Video Ouput	VGA
Ethernet Card	10/100/1000 MBPS
Free Memory	2GB DOM (Disk On Module)
Video In	64 Channels
Audio In	64 Channels

Technical Specifications

Model	NDVR-9332HC	NDVR-9364HC
Video Input	32	64
Audio Input	32	64
Sensor Input / Relay Output	4 in / 4 out or 16 in / 16 out	
Compression Standard	H.264	
VGA Output	24 Bit True Color	
Live Display Frame Rate	960 fps	1920 fps
Video Recording Frame Rate	960 fps	1920 fps
Communication Protocols	TCP/IP, DHCP, PPPoE	
Back Up Function	Internal IDE or SATA Hard Disk or SCSI /USB Interface HDD / CDR-W / DVD-RW	
Language	English / Chinese / France/ Germany / Spain / Russian / Italy / Portuguese	
Redundant Power Supply	100V ~ 240VAC Auto Switch	
Size	51cm(L) x 45cm (W) x 38cm (H)	

► Specifications are subjected to change without prior notice.

Application Diagram



NDVR System For Maximize IP & Analog Camera Recording and Management



Software Feature

- Windows Embedded operation system
- Operation System Software in DOM(Disk On Module)
- Up to 64 Channels Live surveillance
- Build in SATA Disk Raid Level 0, 1, 0+1, 5
- Screwless hot-swap tyays, fans
- Real Time video and audio recording
- Support TCP/IP, DDNS and DHCP via router
- Support NAS or USB external Device
- Remote Viewing and Playback via Web browser and AP software
- Support 3GPP Service
- Support alarm message through E-mail or phone call
- Maxi Watch Megapixel TCP-Plus software support (option) with Megapixel brands include Arecont Vision, Axis, IQinvision, Lumenera, Mobitix and Vivotek
- Embedded smart guard system to handle unusual events and instant notification actions
- GUI interface to setup recording schedule
- Support video smart analysis software such as Missing object, Foreign object, Lose focus, Cameras occlusion and Signal lost. Users could be alarmed by display on screen, Play sound, Send e-mail, Phone call, PTZ preset go and Signal digital output
- Dual monitor support for viewing live video and playback
- Printing and image/video export support
- Complete system and event log database
- Enables manual control ,preset and patrol of PTZ and dome camera
- Enable I/O connection on cameras

System Requirement

Hardware	Industrial Computer
CPU	Intel Core 2 Quad
Memory	2GB
Hard Disk Interface	SATA Hard Disk
Operation System	Windows Embeded System
Video Ouput	VGA
Ethernet Card	10/100/1000 MBPS
Free Memory	2GB DOM (Disk On Module)
Video In	64 Channels
Audio In	64 Channels

Technical Specifications

Model	NDVR-9332HC	NDVR-9364HC
Video Input	32	64
Audio Input	32	64
Sensor Input / Relay Output	4 in / 4 out or 16 in / 16 out	
Compression Standard	H.264	
VGA Output	24 Bit True Color	
Live Display Frame Rate	960 fps	1920 fps
Video Recording Frame Rate	960 fps	1920 fps
Communication Protocols	TCP/IP, DHCP, PPPoE	
Back Up Function	Internal IDE or SATA Hard Disk or SCSI /USB Interface HDD / CDR-W / DVD-RW	
Language	English / Chinese / France/ Germany / Spain / Russian / Italy / Portuguese	
Redundant Power Supply	100V ~ 240VAC Auto Switch	
Size	51cm(L) x 45cm (W) x 38cm (H)	

► Specifications are subjected to change without prior notice.

Application Diagram

NVR System High Density Recording and Management For IP Camera



Software Feature

- Windows Embedded operation system
- Operation System Software in DOM (Disk On Module)
- Up to 64 Channels Live surveillance
- External SATA Disk Raid Level 0, 1, 0+1, 5 support
- Real Time video and audio recording
- Support TCP / IP, DDNS and DHCP via router
- Support NAS or USB external Device
- Remote Viewing and Playback via Web browser and AP software
- Support 3GPP Service
- Support alarm message through E-mail or phone call
- Maxi Watch Megapixel TCP-Plus software support (option) with Megapixel brands include Arecont Vision, Axis, IQinvision, Lumenera, Mobitix and Vivotek
- Embedded smart guard system to handle unusual events and instant notification actions
- GUI interface to setup recording schedule
- Support video smart analysis software such as Missing object, Foreign object, Lose focus, Cameras occlusion and Signal lost. Users could be alarmed by display on screen, Play sound, Send e-mail, Phone call, PTZ preset go and Signal digital output
- Dual monitor support for viewing live video and playback
- Printing and image/video export support
- Complete system and event log database
- Enables manual control, preset and patrol of PTZ and dome camera
- Enable I/O connection on cameras

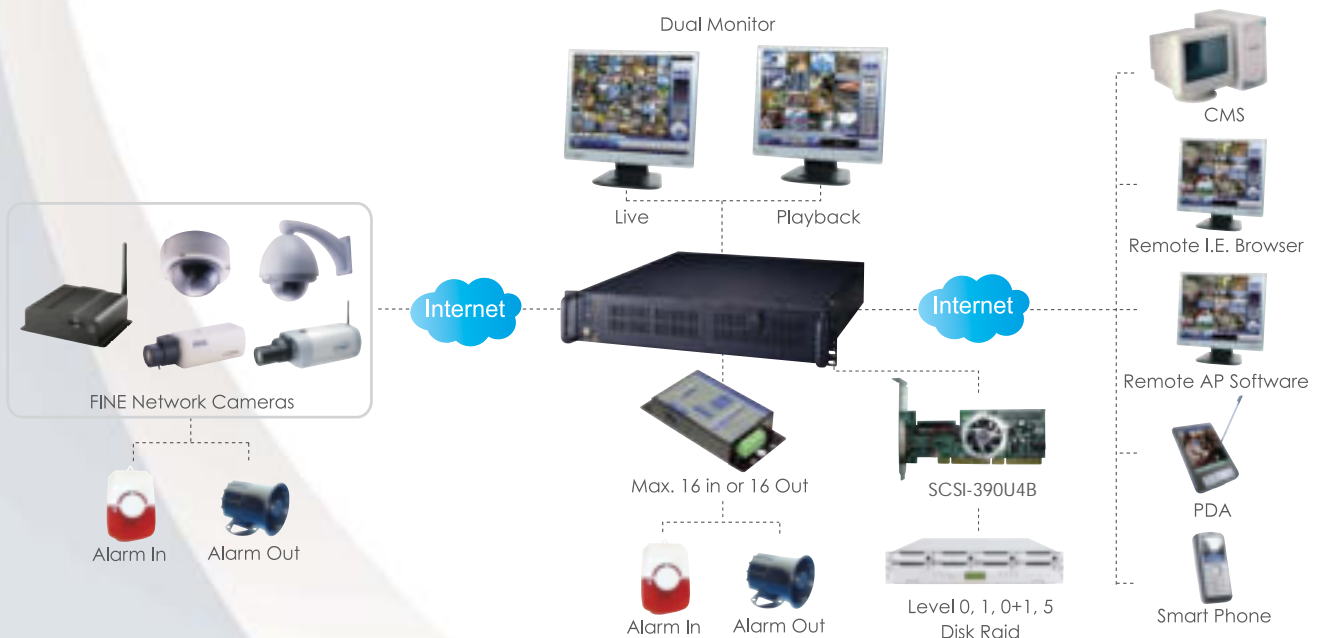
System Requirement	
Hardware	Industrial Computer
CPU	Intel Core 2 Quad
Memory	2GB
Hard Disk Interface	SATA Hard Disk
Operation System	Windows Embeded System
Video Ouput	VGA
Ethernet Card	10/100/1000 MBPS
Free Memory	2GB DOM (Disk On Module)
Video In	64 Channels
Audio In	Max. 64 Channels (Up to IP Device)

Technical Specifications

Model	NVR-2U4S	NVR-2U8S	NVR-2U16S	NVR-2U32S	NVR-2U64S
Number of IP channels	4	8	16	32	64
Sensor Input / Relay Output	4 in / 4 out and 16 in / 16 out				
Compression Standard	MPEG4 / JPEG				
VGA Output	24 Bit True Color				
Communication Protocols	TCP/IP, DHCP, PPPoE				
Back Up Function	Internal IDE or SATA Hard Disk or SCSI / USB Interface HDD / CDR-W / DVD-RW				
Language	English / Chinese / France/ Gernary / Spain / Russian / Italy / Portuguese				
Redundant Power Supply	100V ~ 240VAC Auto Switch				
Size	51cm(L) x 45cm(W) x 38cm(H)				

► Specifications are subjected to change without prior notice.

Application Diagram



SCSI To SATA II RAID 6 Subsystem

Key Feature

- Supports RAID levels 0, 1, 0+1, 3, 5, 6 and JBOD
- Supports hot spare and automatic hot rebuild
- Allows online capacity expansion within the enclosure
- Local audible event notification alarm
- Supports password protection and UPS connection
- Built-in serial port interlace for remote event notification
- Dual host channels support clustering technology
- Tagged command queuing for 256 commands, allows for overlapping data streams
- Transparent data protection for all popular operating systems
- RAID ADG provides the highest level of data protection
- Supports multiple array enclosures per host connection
- Instant availability and background initialization
- Support greater than 2TB per volume set 64-bit LBA support
- Support 4K bytes/sector for Windows up to 16TB per volume set
- Support S.M.A.R.T, NCQ and OOB staggered spin-up capable drives
- Support online Array roaming
- Online RAID level/stripe size migration
- Online capacity expansion and RAID level migration simultaneously
- Online volume set expansion
- Supports replay dry contact port for warning device connection



Technical Specifications

Model	OT-R8968SA
Form-factor	2U 19-inch rackmount chassis
RAID processor	Intel 80321 64 bit RISC
RAID level	0,1,0+1,3,5,6, JBOD
Cache memory	256MB ~ 1024MB
No. of channels (host+ drive)	2+ 8
Host bus interlace	Ultra 320 LVD
Drive bus interface	SATA II
Data transfer rate	Up to 320MB /sec
Hot-Swap Drive Trays	Eight (8) – 1 inch trays
Online Capacity Expansion, RAID level / stripe size migration	Yes
Online Volume sets expansion	Yes
Online Array roaming	Yes
Online consistency check	Yes
SMTP manager and SNMP agent	Yes
E-mail Notification	Yes
Redundant Flash Image	Yes
R-Link support	Yes
Support Over 2TB per volume	Yes
Instant Availability and Background Initialization	Yes
S.M.A.R.T. support	Yes
New Disk Insertion / Removal Detection	Yes
Failed Drive Auto Rebuild	Yes
Continuous Rebuild	Yes
Multiple RAID selection	Yes
Bad Block Auto-Remapping	Yes
Buzzer Alarm	Yes
Password Protection	Yes
Tray Lock	Yes
UPS connection	Yes
Hot-Swap power supplies	Two (2) 300W power supplies w / PFC
Cooling Fans	4
Battery Backup	option
Power Requirements	AC90V / 264V Full Range, 6A~3A, 47Hz~63Hz
Operating Temperature	10°C ~ 40°C (50°F ~ 104°F)
Dimensions	88(H) x 485(W) x 418(D) mm
Weight	11.8 Kgs (without HDD)

► Specifications are subjected to change without prior notice.

Accessory

Board Accessory



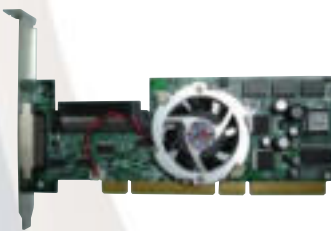
Model	CP-SIO44
Input Channel	4 digital input channel
Output Channel	4 digital output channel
Communication Interface	RS-485
Relay Type	2 Form A(R1,R2), 2Form C(R3, R4)
Transmission distance	500M
Signal LED	Power on, all channel
Power supply	Screw terminal, or external DC adapter
Power consumption	2.7W
Dimension	151 x 75 x 26 mm

Model	CP-SI16
Output Channel	16 digital output channels
Communication Interface	RS-485 differential 2 half / duplex wires
Communication Speed	Baud rate from 1.2 Kbps to 115.2 Kbps
Transmission distance	RS485 Up to 4000ft (1200M).
Signal LED	Power on, all output channels
Dual watchdog	Reset circuit module / Host operating status
Power supply	Screw terminal, or external DC adapter
Power consumption:	1.5W
Dimension	151 x 75 x 26 mm

Model	CP-SO16
Input Channel	16 digital input channels with counter
Counter Channel/Frequency	16 / 100Hz
Communication Interface	RS-485 differential 2 half / duplex wires
Communication Speed	Baud rate from 1.2 Kbps to 115.2 Kbps
Transmission distance	RS485 Up to 4000ft (1200M).
Signal LED	Power on, all input channels
Dual watchdog	Reset circuit module / Host operating status
Power supply	Screw terminal, or external DC adapter
Power consumption:	1.5W
Dimension	151 x 75 x 26 mm

► Specifications are subjected to change without prior notice.

SCSI Accessory



Key Feature

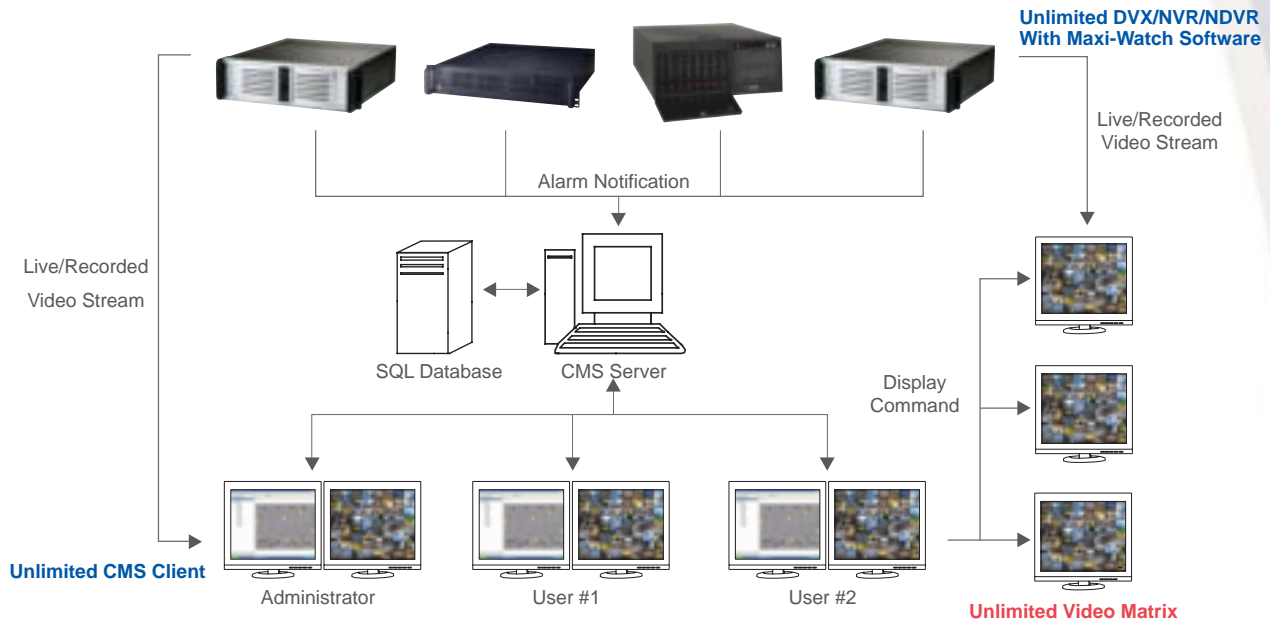
- Enhanced Reliability and stability with a knock-down cooling fan
- Backward compatible with previous SCSI generations
- 133MHz, 64bit PCI-X interface, with maximum 1066 MB/s data throughput
- Supports Double Transition Clocking: Packetized Protocol: Quick Arbitration and Selection: Skew Compensation and Domain Validation

Model	SCSI-390U4B
Protocols Supported	Ultra 320 LVD, Ultra160/Ultra2 LVD, Ultra-Wide SCSI Ultra & SCSI-2
SCSI Processor	LSI 53C 1020 (SCSI-390U4B Only)
SCSI BIOS/Channel	Yes (Flash) Channel:Single (SCSI-390U4B)
Max Transfer Bate	320 MB/Sec (Ultra320)
Internal Connectors	68-pin HD (SCSI-390U4B Only)
External Connector	68-pin VHDCI (SCSI-390U4B Only)
PCI Interface	64/32 bit, PCI-X (SCSI-390U4B Only)
Max Devices	15/30
Drivers Available	Dos ASPI, Novell NetWare, Solaris, Sun Solaris, Windows 2000/NT/XP, SCO Unix Open Desktop/Open Server, SCO UnixWare, Linux
Target Applications	Supported Internal SCSI Devices: Transfer Rate: 10MB/sec~320MB/sec, Bus Width: 8-bit, 16-bit CD-ROM, CD-RW, DVD-ROM, MO, Tape, HDD,..etc.
	Supported External SCSI Devices: Transfer Rate: 80MB/sec~320MB/sec, Bus Width: 16-bit HDD subsystem, RAID, CD-ROM, CD-RW, DVD-ROM, MO, Tape, Scanner,..etc.
	Options: Different sized brackets can be mounted on either 1U or 2U case

► Specifications are subjected to change without prior notice.

Central Management System (CMS)

Software Block Diagram:



Key Features

■ High Compatibility

Supports all DVX/NVR/NDVR based site, as well as all IP camera brands supported by Main Console (FINE, ACTI, Axis, Panasonic, Sony, JVC, Lumenera, Arecont, IQeye, Mobotix, Panasonic, Pixord, Sony, VIVOTEK).

■ Unlimited Server Solution

There is no limitation for the number of camera and DVX/NDVR/NVR sites.

■ Unlimited Matrix Consoles

Each matrix can displays up to 64 channels live camera viewing.

■ Powerful Alarm Management

Intuitive E-Map GUI indicates all the devices and real-time alarm altering information. Administrator can take advantage of full alarm management to acknowledge or update alarms status in the most efficient way.

■ Remote Configuration

It enable administrator to manage remote servers.

■ Triple Monitor Scenario

One monitor displays E-Map/Navigation Panel, another monitor shows Live Matrix System while the last monitor indicates Alarm List / Message List / Remote Playback.

■ Central Server

- Client/Server architecture enables CMS server to be connected by CMS clients.
- Use SQL Server 2005 Express to store all alarm logs.
- Central Server connects to Local DVR directly to get alarm notifications and provides TCP service for CMS client to access through network.
- Support real time notification such as Email and SMS message.
- Use easily across time zones: Central Server transfers different time zones into UTC, Coordinated Universal Time, and present administrator's local time in the central system.

■ E-Map

- E-Map supports image format (BMP, GIF, JPEG, PNG, and TIFF)
- User can edit maps and servers easily; by synchronizing each server, user can access to connected devices.
- Make use of navigation tool to zoom in, zoom out, rotate and drag operation on maps.
- Hierarchical tree map, you can make unlimited grouping to connect various devices (systems).
- User can edit unlimited multi-level site maps which can track back to incident's location efficiently.

■ Mobile Map Indicators

Surveillance servers, cameras and I/O devices indicators can be dragged freely to the map and distinguished by different image.



Manage all NVR / NDVR and supported IP camera/video server



Up to 64 concurrent live camera viewing for each video matrix



Intuitive EMap GUI to indicate all the alarms



Remote desktop and configuration to manage remote server

Central Management System (CMS)



Display mode with E-Map support
Navigation design for zoom in/out



Alarm Live Video Pop up notification



Remote Playback Window



Remote Back up Recorded Video



Low Disk Space, Disconnect Servers,
Unusual System Health Alarm



Remote PTZ control

Key Features

■ Instant Status Notification

System will show correspondingly small icon nearby the devices in the map automatically to notify users of the events. User can know each device's current status easily and clearly from the map.

■ Intuitive Map Operations

Once alarm is triggered, user can make instant reactions by requesting alarm information, activating live video and playback video to track back events. Moreover, user can backup recorded video for future examination.

■ Supported up to 30 Alarm Types

Alarm could be triggered when signal abnormal, digital input trigger, network abnormal, system setting change, general events, low disk space, and etc.

■ Alarm Priority

Four different priorities (critical, high, normal, low) can be defined for each alarm so that user can deal with alarms in order.

■ Alarm Coverage

User can define a valid period time for each alarm, for example, detecting general motion only during off-office time.

■ Alarm Management Guide

When an alarm occurs, user can access management guide from the alarm notification on map.

■ Alarm Procedure

User is allowed to manually change the selected one/multiple/all alarm status and alarm priority. Also, alarm can be assigned to different owners in case default owner is unable to deal with it.

■ Alarm Auto Notifications

When an alarm occurs, client system can play user-define sound, go to device's map layer, popup device's live video window, show live video or related camera's live video in the chosen matrix; server will send email or SMS message to any selected user.

■ Alarm Viewing

System will show the specific alarm image and alarm detail automatically once the alarm is triggered. User can export selected alarm details to Excel file or even print alarm details.

■ Advanced Alarm Search

When searching for alarms, user can search by alarm name, owner name, alarm state, alarm priority, time periods, source device and alarm type. By editing/saving filter criterion, user can access required alarm logs in an efficient way.

■ Live Matrix System

- Live Matrix System receives all commands from CMS Client system to enable live video viewing on CCTV monitors.
- Each matrix can support up to 64 concurrent camera viewing.
- Support 9 various grid types.
- Support flexible auto scan viewing mechanism and full screen video preview with automatically hidden toolbar.
- CMS Client User can activate floating PTZ panel to manipulate selected camera on the matrix system.
- User can select any matrix grid to popup live video associated with alarms when events are detected.
- Client users can access to different matrix profiles. System can save unlimited matrix profiles and one matrix profile can be loaded by many users.

■ Remote Playback System

- From CMS Client window, user can access remote playback system for any connected server.
- Support up to 16 concurrent camera viewing.
- Support various grid types such as 1, 4, 9 and 16.
- Export video to "AVI" or "ASF" file; Export single frame to "BMP" and "JPEG" file.
- Support intelligent search for general motion, missing object, foreign object, lose focus and camera occlusion

■ UserGroup Authority

User can define the authority of UserGroup in a most flexible way. Privilege functions, including alarm management, view alarm image, view live video, view recorded video, PTZ control, control digital output and remote desktop, and access devices can be defined differently for each User Group.

■ User Authority

- Each User belongs to one UserGroup and shares the UserGroup's authority. Moreover, coverage period and access matrix profile can be defined differently for each user.
- Build-in Remote Desktop CMS users can configure each connected surveillance server through remote desktop protocol if they have remote desktop authority.

Central Management System (CMS)

Specifications

Function	Description
Key features	
Client Server Architecture	One CMS server could be connected by several CMS clients
Supported Devices	Support all NVR/NDVR site, as well as all IP camera brands supported by MaxiWatch. (FINE, ACTi, Axis, Panasonic, Sony, JVC, Lumenera, Arecont, IQeye, Mobotix, Panasonic, Pixord, Sony, VIVOTEK)
Unlimited Server Solution	Unlimited access of cameras and NDVR/NVR site
Multiple Matrix System	Unlimited matrix consoles could be connected through network
Live Viewing	Up to 64 concurrent camera viewing for each matrix console
Full Alarm Management	Acknowledge or manage alarm log in the most efficient way.
Triple Monitor Scenario	
Default Monitor #1	Navigation Panel / Map Section
Default Monitor #2	Live Matrix System
Default Monitor #3	Alarm List / Message List / Remote Playback
CMS Server	
Alarm Database	Use SQL Server 2005 Express to store all the alarms
Central Server	Store the site map data by hierarchical structures
	Directly connect to surveillance server to get alarm notifications
	Provide TCP service for CMS clients' access through network
	Registers different time zones into UTC format
Supported Notification Type	Send E-mail / SMS message
E-Map	
Map Tree Hierarchy	Unlimited level of display site map
Maps Formats	Supported image format: BMP, GIF, JPEG, PNG, and TIFF
Define Surveillance Servers	New / Edit / Delete / Disable and Enable
Define Cameras	New / Edit / Delete
Navigation Tools	Use to use zoom in, zoom out and drag operation
Indicators on Maps	Indicators for maps, servers, cameras and I/O devices
	Indicator icons support image format with alpha channel (TIFF)
Instant Status Notification	show correspondingly small icon nearby the devices automatically to notify users of the events
Intuitive Operation on Maps	Open Last Alarm, Open Live Video Window, Open Instant Playback Window, Backup Recorded Video, View Server Status Report
Live Popup Window	Live popup window to show live video with PTZ control panel
Playback Popup Window	Remote playback popup window to show recorded video
Alarm Management	
Supported Alarm Type	Video Signal Abnormal, Digital Input Trigger (Normal / Emergency) Network Abnormal, DVR / NVR Abnormal, Motion / Missing / Foreign / Focus / Blocked, Low Disk Space, CPU temperature High / Fan Speed Low
Action when Alarm	Instant notifications on map and event list, Go to specific map layer, Play sounds, Automatically show live video on popup window, Automatically show live video on live matrix system Send SMS, Send Email
Alarm Viewing	Filter tools to survey existing alarm history
Alarm Detail Popup	Show / Print a specific alarm with image preview
Advanced Alarm Search	Access required alarm logs in the most efficient way
Matrix System	
Live Viewing	Up to 64 concurrent camera viewing
Grid Type	1, 4, 9, 13, 16, 25, 36, 49, 64
View Type	Flexible auto scan mechanism and full screen viewing
Automatically Popup	Show the live video associated with alarms
PTZ Panel	Floating PTZ panel to manipulate cameras on the matrix system
Remote Playback System	
Remote Playback	Up to 16 concurrent camera viewing
Grid Type	1, 4, 9, 16
Export Function	Save as image and video, as well as printing
Smart Search	Fast search based on the specific event
Miscellaneous	
UserGroup Authority	Alarm Management View Alarm Image View Live Video View Recorded Video PTZ Control Control Digital Output Remote Desktop Access Devices
User Authority	User/Password Phone Number Email UserGroup Coverage Matrix Profile
Built-in Remote Desktop	CMS could control NVR/NDVR through remote desktop protocol

► Specifications are subjected to change without prior notice.