

EAGLE SERIES HIGH SPEED DOME D/N, 540 TVL, WDR



*Support Pelco-Coaxitron
Manchester, Bi-Phase*

EP-HTQ935 35X OPTICAL ZOOM

- WIDE DYNAMIC
- MULTIPLE PROTOCOLS
- MULTIPLE LANGUAGE
- IP INTEGRATION (OPTION)

Key Features

- Day Night + ICR, more than 540 TV Lines of Horizontal Resolution
- 1/4" SONY Super HAD CCD, 35X Optical Zoom (12X Digital Zoom) f=3.4mm (wide) to 119 mm (tele). F1.4~4.2
- 7 alarm inputs, 2 alarm outputs
- 8 programmable zones
- 4 privacy masking zones
- Positioning accuracy up to 0.1 degree
- Black Liner for Discreet Surveillance
- Communication Interface: RS485/ RS422
- Built in 1500W lightning proof and surge proof
- Auto Running: allows the dome to return to any preset, sequence, pattern, panning automatically after a period of time without getting signal
- 4 auto scans with up to 355 degree scan range
- High Sensitivity of 0.01 Lux
- 4 presets tour, each one with up to 32 presets dwell time can be set
- 220 presets with editable time
- 4 privacy masking zones
- 4 Patterns, each one with minimum 180 seconds of record
- Communication Interface: RS485/ RS422
- Baud Rate: 2400 / 4800 / 9600 / 19200 bps
- Support Multiple Protocols: Pelco P/D, VCL, Vicon, Molyxn, Kalatel, Ernitec, Lilin, Panasonic. (Pelco-Coaxitron, Manchester, Bi-Phase)
- Video Output: BNC / UTP

Technical Specifications

Model	EP-HTQ935
Image Sensor	1/4" SONY Super HAD CCD
TV System	PAL: 752(H) x 582(V); 2:1 Interlace NTSC: 768(H) x 494(V); 2:1 Interlace
Horizontal Resolutions	Color: More than 540 TV lines B/W: More than 600 TV Lines
Synchronization	Internal / External V-lock
Optical Lens	35X Optical Zoom, f=3.4mm (wide) - 119mm (tele), F1.4 ~ F4.2
Digital Zoom	12X (420x with optical zoom)
Viewing Angle (H)	55.8° (wide end) to 1.7° (tele end)
Video Output	1.0Vp-p (sync negative)
Gain Control	Auto / Manual (-3 to 28dB, 16 steps)
Minimum Illumination	1.0 Lux (1/60s NTSC 1/50s PAL) 0.01 Lux (1/4s NTSC 1/3s PAL, ICR-ON)
S/N Ratio	≥ 50dB
White Balance	Auto, ATW Indoor Outdoor, One Push WB, Manual WB
BLC	On / Off
ELC	Auto: 1/50 ~ 1/10,000 sec ; Manual: 22 steps
White Balance	Auto (3000° K~7500° K) ATW (2000° K~ 10,000° K) Indoor Outdoor One-push Manual
AE Compensation	Auto, Manual, Backlight compensation, EV compensation, priory mode, bright, slowAE
EV Compensation	-10.5 ~+10.5dB(1.5 dB steps)
Focusing System	Auto (sensitivity: normal, low), One-push AF, manual, Infinity, Interval AF, Zoom Trigger AF
Day Night Function	Yes, with ICR Filter
Aperture Control	16 steps
Preset	220 positions
Focus	Auto / Manual
OSD Language	English, Italian, Spanish, German French & Russian
Operating Temperature	Indoor: -10°C ~ + 50°C (14°F ~ +122°F) Outdoor: -40°C ~ + 70°C (-40°F ~ +158°F)
Storage Temperature	-20°C ~ +60°C (-4°F ~ +140°F)
Power Supply	AC24V., 50 / 60 Hz
Power Consumption	Indoor: 10W, Outdoor: 50W
Mechanical Specification	
Pan Range	360° continuous
Tilt Range	90°
Manual Pan Speed	0.1 — 160° / sec.
Manual Tilt Speed	0.1 — 160° / sec.
Preset Speeds	Pan: more than 360° / sec, Tilt: more than 360° / sec.

► Specifications are subjected to change without prior notice.

EAGLE SERIES HIGH SPEED DOME D/N, 480 TVL



*Support Pelco-Coaxitron
Manchester, Bi-Phase*

EP-936 36X OPTICAL ZOOM

EP-908 26X OPTICAL ZOOM

EP-601 18X OPTICAL ZOOM

- MULTIPLE PROTOCOLS
- MULTIPLE LANGUAGE
- IP INTEGRATION (OPTION)

Key Features

- Day Night + ICR, more than 480 TV Lines of Horizontal Resolution
- Quick and easy to install in just a few seconds
- Auto running : allows the dome to return any preset, sequence, pattern, panning automatically after a period of time without getting signal
- 8 programmable zones for EP-936/EP-908/EP-601
- 220 presets with editable time for EP-936/EP-908/EP-601
- 7 alarm inputs, 2 outputs for EP-936/EP-908/EP-601
- 24 privacy zones for EP-936, 8 privacy for EP-908/601
- Positioning accuracy up to 0.1 degree for EP-936/EP-908/EP-601
- 4 auto scans with 355 degree scan range for EP-936/908
- 4 panning with up to 355 degree scan range
- 4 sequences, each one with 32 presets dwell time can be set for EP-936/EP-908/EP-601
- 4 pattern tours each one with up to 180 seconds of record for EP-936/EP-908/EP-601
- Communication Interface : RS485/RS422
- Baud Rate: 2400/4800/9600/19200 bps
- Support multiple protocols: Pelco P/D, VCL, Vicon, Molyntx, Diamond, Kalatel, Ernitec, Lilin, Panasonic (Pelco-Coaxitron, Manchester, Bi-Phase)
- Black liner for discreet surveillance
- Built in 1500W lighting proof and surge proof
- Video Output: BNC / UTP

Technical Specifications

Model	EP-936	EP-908	EP-601
Image Sensor	1/4" SONY Exview HAD CCD		
TV System	PAL: 752(H) x 582(V) ; 2:1 interlace NTSC: 768(H) x 494(V) ; 2:1 Interlace		
Horizontal Resolution	Color: More than 480 TV lines B/W: More than 600 TV Lines		
Synchronization	Internal / External V-lock		
Optical Lens	36X Optical Zoom, f=3.4mm(wide) - 122.4mm (tele), F1.6 -4.5	26X Optical Zoom, f=3.5mm(wide) - 91.0mm (tele), F1.6 -3.8	18X Optical Zoom, f=4.1mm (wide) - 73.8mm (tele), F1.4 -3.0
Digital Zoom	12X (up to 432X with optical zoom)	12X (up to 312X with optical zoom)	12X (up to 216X with optical zoom)
Video Output	1.0Vp-p (sync negative)		
Gain Control	Auto / manual (-3 to 28dB, 16 steps)		
Minimum Illumination	1.0 Lux (1/60s NTSC 1/50s PAL, F1.4) 0.01 Lux (1/4s NTSC 1/3s PAL, ICR-ON)		0.7Lux (1/60s NTSC 1/50s PAL, F1.4) 0.01 Lux (1/4s NTSC 1/3s PAL, F1.4, ICR-ON)
S/N ratio	> 50dB		
BLC	On / OFF		
ELC	Auto: 1/50 - 1/10,000 sec. ; Manual : 22 steps		
White Balance	Auto (3000°K-7500°K) ATW (2000°K-10,000°K) Indoor, Outdoor, One-push, Manual		
AE Compensation	Auto, Manual, Backlight compensation, EV compensation, priority mode, Bright, Slow AE	Auto, Manual, Backlight compensation, EV compensation, priority mode, Bright.	
EV Compensation	-10.5 +10.5dB (1.5 dBsteps)		
Focusing System	Auto (sensitivity: normal, low), One-push AF, manual, Infinity, Interval AF, Zoom Trigger AF		
Day Night Function	Yes, with ICR Cut Filter		
Aperture Control	Auto / manual		
Preset	220 positions		
Focus	Auto / manual		
OSD Language	English, Italian, Spanish, German, French, Russian and Portuguese		
Operating Temperature	Indoor: -10°C to + 50°C (14°F to 122°F) , Outdoor: -40°C to + 70°C (-40°F to 158°F)		
Storage Temperature	-20°C to + 60°C (- 4°F to 140°F)		
Power Supply	AC24V, 50 / 60Hz		
Power Consumption	Indoor 10w, outdoor 50w		
Mechanical Specification			
Pan Range	360° continuous		
Tilt Range	90 degrees		
Manual Pan Speed	0.1- 160 degree / sec.		
Manual Tilt Speed	0.1-160 degree / sec.		
Preset Speeds	Pan: more than 360 degrees , tilt: more than 360 degrees		

► Specifications are subjected to change without prior notice.

EAGLE SERIES HIGH SPEED DOME COLOR, 480 TVL



*Support Pelco-Coaxitron
Manchester, Bi-Phase*

EP-201 18X OPTICAL ZOOM EP-221 22X OPTICAL ZOOM

- MULTIPLE PROTOCOLS
- IP INTEGRATION (OPTION)

● Key Features

- EP-201: 1/4" SONY SUPER HAD CCD, 18X Optical Zoom (12X Digital Zoom) f=4.1mm(wide) to 73.8mm(tele). F1.4 ~ 3.0
- EP-221: 1/4" SONY SUPER HAD CCD, 22X Optical Zoom (16X Digital Zoom) f=3.9mm(wide) - 85.8mm(tele), F1.6 ~ F3.7
- High Sensitivity of 1.0 Lux(typical) F1.4, 50IRE
- 80 presets with editable time
- Positioning accuracy up to 0.1 degree
- Auto Running: allows the dome to return to any preset, sequence, pattern, panning automatically after a period of time without getting signal.
- 2 Panning with up to 355 degree scan range.
- 2 Sequences, each one with up to 32 presets dwell time can be set
- 2 Patterns, each one with minimum 180 seconds of record
- Communication Interface: RS485/ RS422
- Baud Rate: 2400 / 4800 / 9600 / 19200 bps
- Support Multiple Protocols: Pelco P/D, VCL, Vicon, Molynx, Kalatel, Ernitec, Lilin, Panasonic.(Pelco-Coaxitron , Manchester, Bi-Phase)
- Black Liner for Discreet Surveillance
- Built in 1500W lightning proof and surge proof.
- Video Output: BNC / UTP

● Technical Specifications

Model	EP-201	EP-221
Image Sensor	1/4" SONY SUPER HAD CCD	
TV System	PAL: 752 (H) x 582(V); 2:1 Interlace NTSC: 768(H) x 494 (V); 2:1 Interlace	
Horizontal Resolutions	Color: More than 480 TV lines	Color: More than 480 TV lines
Synchronization	Internal/ External V-lock	
Optical Lens	18X Optical Zoom, f=4.1mm (wide) - 73.8mm (tele), F1.4 ~ F3.0	22X Optical Zoom, f=3.9mm (wide) - 85.8mm (tele), F1.6 ~ F3.7
Digital Zoom	12X (216 x with optical zoom)	16X (352 x with optical zoom)
Video Output	1.0Vp-p (sync negative)	1.0Vp-p (sync negative)
Gain Control	Auto / Manual (-3 to 28dB, 16 steps)	
Minimum Illumination	1.0 Lux (1/60s NTSC 1/50s PAL, F1.4)	0.7 Lux (F1.6)
S/N Ratio	≥ 50dB	
BLC	On / Off	
ELC	Auto: 1/50 ~ 1/10,000 sec ; Manual: 22 steps	
White Balance	Auto (3000°K ~ 7500°K) ATW (2000°K ~ 10,000°K) Indoor Outdoor One-push Manual	
AE Compensation	Auto, Manual, Backlight compensation, EV compensation, priority mode, bright	
EV Compensation	-10.5 ~+10.5dB (1.5 dB steps)	
Focusing System	Auto (sensitivity: normal, low), One-push AF, manual, Infinity, Interval AF, Zoom Trigger AF	
Day Night Function	Not available	
OSD Language	English	
Operating Temperature	Indoor: -10°C ~ +50°C (14°F ~ +122°F) Outdoor: -40 °C ~ +70°C (-40°F ~ +158°F)	
Storage Temperature	-20°C ~ +60°C (-4°F ~ +140°F)	
Power Supply	AC24V., 50 / 60 Hz	
Power Consumption	Indoor: 10W, Outdoor: 50W	
Mechanical Specification		
Pan Range	360° continuous	
Tilt Range	90°	
Manual Pan Speed	0.5 ~140 ° / sec.	
Manual Tilt Speed	0.5 ~140 ° / sec.	
Preset Speeds	Pan: more than 300° / sec, Tilt: more than 300° / sec.	

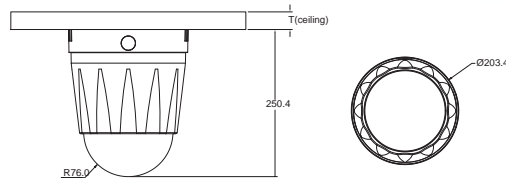
▶ Specifications are subjected to change without prior notice.

ACCESSORIES FOR EP SPEED DOMES

EP-803

Surface Mount For Indoor Housing Use

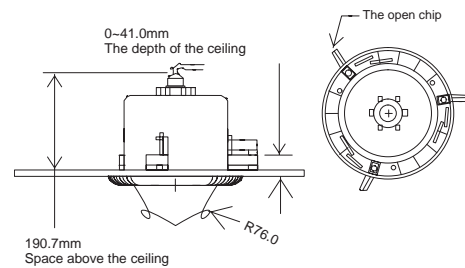
- Bubble: (standard) clear cover with black insert
- Smoke type (option)
- Vandal proof (option)
- Upper Housing Color: Cool Gray
- Construction: Hard Plastic for the upper housing, acrylic bubble
- Weight (includes PTZ mechanism module): 2.3 kgs



EP-802

Flush Mount For Indoor Housing Use

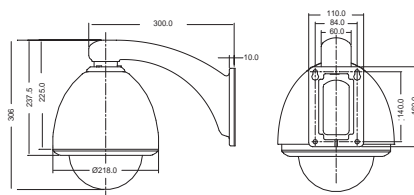
- Bubble: standard: clear cover with black inserts
- Smoke type (option)
- Vandal proof (option)
- Upper Housing Color: Black
- Construction: Hard Plastic for the upper housing, acrylic bubble
- Weight (includes PTZ mechanism module): 2.5 kgs



EP-W804

Wall Mount Bracket

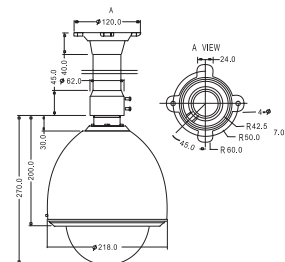
- Material: Aluminum
- Dimension: 300mm (L) x 110mm(W) x 160mm (H)
- Weight: 1.2 Kgs



EP-P805

Pendant Mount Bracket

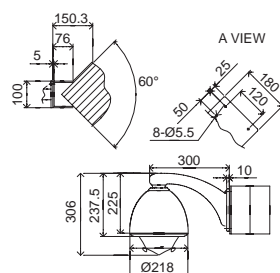
- Material: Aluminum
- Weight: 1.3 Kgs



EC-01

Corner Mount

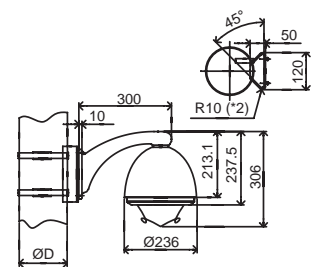
- Material: Aluminum
- Weight: 2.0 Kgs



EP-P02

Pole Mount

- Material: Aluminum
- Weight: 1.1 Kgs



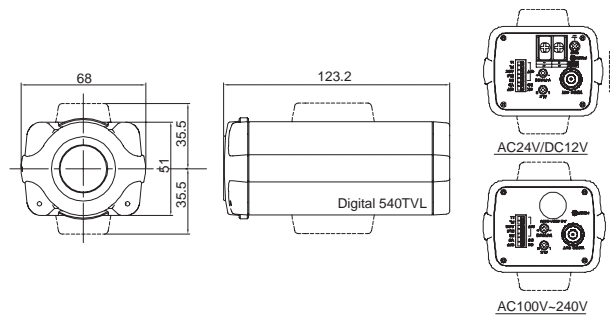
SUPREME CAMERA 540TVL



● Key Features

- High Definition Image with 1/3" SONY Advanced SONY CCD
- Produces crispy video picture of 540 TVL color, 600 TVL Monochrome
- Excellent sensitivity of 0.1Lux at F1.2 10 IRE color mode, 0.01 Lux F1.2 10IRE B/W mode
- Color / Mono switchable by ICR filter For CL-DN8840
- Flickerless switch for 50/60Hz Frequency
- Digital Noise Ratio reaches more than 52dB
- Color is suppressed with color killer mode to reduce noise level at low light condition
- Easy backfocus adjustment

● Mechanical Dimension



● Technical Specifications

Model	CL-DN8840 (PAL/NTSC)	CL-8820(PAL/NTSC)
CCD Image	1/3" Format Interline SONY CCD	
Effective Pixels	768(H) x 494(V) NTSC , 752(H) x 582(V) PAL	
Scanning Frequency	NTSC: 2:1 Interlace H: 15750Hz, V: 60Hz , PAL: 2:1 Interlace H: 15625Hz, V:50Hz	
Horizontal Resolution	More than 540 TV Lines AT COLOR MODE, More than 600 TV Lines at B/W MODE	
Video Output	1 Vp-p, 75 ohms	
Synchronization	Internal or Linelock (on / off)	
Minimum Illumination	0.1 Lux, F1.2 color mode 0.01 Lux (F1.2 B/W mode (with ICR filter))	0.1 Lux, F1.2, color killer off 0.01 Lux F1.2 color killer on B/W mode
Signal to Noise Ratio	More Than 52dB (AGC OFF)	
Backlight Compensation	On / Off Switch	
White Balance Range	Auto: 2600°K - 10000°K	
Shutter Control	Auto Luminance Control 1/60 (50) - 1/100,000 sec	
Auto Iris Control	Video Drive or DC Drive selectable switch	
Gain Control	Automatic or Manual	
Day Night	Yes, with IR CUT removable filter for switching to color or monochrome during the night & day time	Not available
Color Killer	On / Off switch	
Aperture Control Correction	Vertical & Horizontal (3D)	
Flickerless Mode	On / Off switch to 50/60Hz	
Storage Temperature	-20°C - + 60°C	
Operating Temperature	-10°C - + 50°C	
Power Source	AC24V / DC12V(Low Voltage) , AC100-AC240V (AC Mains)	
Power Consumption	5W Maximum	
External Dimension	123.2(L) x 68(W) x 51(H) mm	
Weight	0.55 Kgs for Low Voltage , 0.75 Kgs for AC mains with power cord	

► Specifications are subjected to change without prior notice.

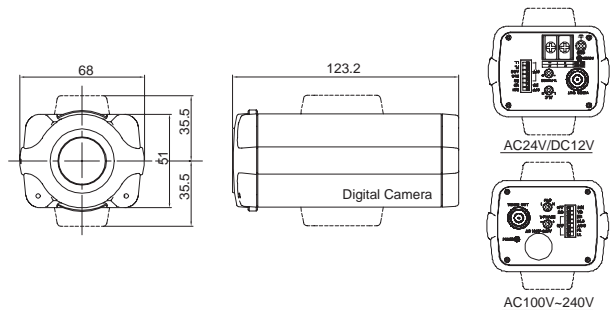
HIGH PERFORMANCE COLOR CAMERA



Key Features

- Utilizing advanced DSP 1/3" SONY CCD
- Stable High Performance Video Picture
- Flickerless mode switches for 50/60Hz
- Extremely low light level at 0.01 Lux
- Backfocus mount
- Universal Power AC100V-260V, Isolated Switching Power AC24V / DC12V

Mechanical Dimension



Technical Specifications

Model	CL-PM6660 (PAL) CL-NM6660 (NTSC)	CL-PH6680 (PAL) CL-NH6680 (NTSC)
Image Sensor	1/3" SONY CCD	
Effective Pixels	752(H) x 582(V) PAL 768(H) x 494(V) NTSC	500(H) x 582(V) PAL 510(H) x 492(V) NTSC
Scanning Frequency	PAL: 2:1 Interlace H: 15625KHz, V: 50Hz NTSC: 2:1 Interlace H: 15750KHz, V: 60Hz	
Resolution	420 TVL (Horizontal)	480 TVL (Horizontal)
Minimum Illumination	0.1 Lux Normal DAY Light 0.01 Lux Low Light	
Video Output	1 Vp-p, 75 ohm BNC Unbalanced	
Signal to Noise Ratio	More Than 50dB	
AGC	Auto	
Electronic Shutter	Up to 100,000 sec.	
Auto Iris Control	Video / Direct Drive	
Gamma Compensation	r 0.45	
BLC	Center Area, on / off Switchable	
Synchronization Mode	Internal	
White Balance	Digital Auto Tracing	
Flickerless	50Hz and 60Hz Switchable	
Operating Temperature	0°C to 40°C	
Storage Temperature	-40°C to 70°C	
Power Source	AC100V-240V or AC24V / DC12V	
Dimension	123.2(L) x 68(W) x 35.5(H) mm	

► Specifications are subjected to change without prior notice.

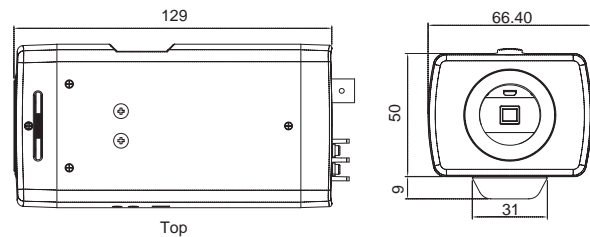
DAY NIGHT 530TVL DNR, PRIVACY ZONE, OSD



● Key Features

- Super Lo-Lux High Sensitivity Day Night Camera.
- Super High Resolution of 530 TV lines at day mode and 600 TV lines at night mode.
- Automatic ICR (IR cut mechanism filter) for excellent video shooting during the day time and night time.
- Accepts Infrared Illumination or other IR light source for vivid picture quality.
- Privacy Masking zone to cover the protected areas.
- Wide range of auto tracking white balance.
- On screen display for easy setting of the camera parameters.
- Adjustment manual shutter speed.
- Universal Power AC90V ~ 260V and low voltage AC24V / DC12V.
- Digital Noise Reduction

● Mechanical Dimension



● Technical Specifications

Model	CL-DN8530XP (PAL)	
Image Are	4.9mm x 3.7mm	Gamma 0.45 / 1 selectable
Image Device	1/3" SONY Exview HAD CCD	Mirror on / off
Effective Pixels	752(H) x 582(V) PAL	Flicker on / off
Scanning System	2:1 Interlace PAL H: 15.625KHz, V: 50Hz	Aperture Correction high / mid / low selectable
Video Output	1Vp-p, 75 ohms unbalanced, Y / C	Privacy Zone 8 Blocks
Synchronization	AC Power: Internal / Linelock (selectable)	DNR (Digital Noise Reduction) Yes
Linelock Phase	External VR with 0° — 300°	Camera ID Yes
Resolution	530TV Lines Day Mode 600 TV Lines Night Mode	OSD (On screen Display) Yes
Color/ Mono Switchable	automatic / color / mono selectable	Lens Mount CS Mount with Easy Backfocus
IR Cut Filter Removable	Yes	Power Supply AC 24V / DC12V, 90V-260V AC Mains
AGC	On (30dB) / Off	Power Consumption 3.5W Max.
Minimum Illumination	0.05 Lux (F1.4, 3200°K); 10IRE Day Mode 0.005 Lux (F1.4, 3200°K); 10IRE Night Mode	Ambient Temperature -10°C- +50°C
Signal To Noise Ratio	More Than 50dB	Dimensions 50(W) x 62(H) x 126(L) mm
Backlight Compensation	OFF / BLC1 / BLC2 / BLC3 / BLC4 / User	Weight 500g.
White Balance	ATW1 (2600°K-6000°K), ATW2 (2600°K-10000°K)	
Shutter Control	Auto 1/50 (60) — 1/100,000sec/manual 8 steps 1/50, 1/120, 1/500, 1/1K, 1/2K, 1/4K, 1/10K	
Iris Control	Video Out / DC Iris Driver Separate	

► Specifications are subjected to change without prior notice.

WIDE DYNAMIC CAMERA

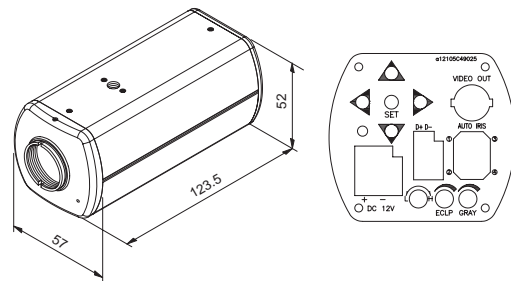
520 TVL CAMERA



● Key Features

- OSD Function Control
- High Resolution 520 TV Lines with 1/3" Image Sensor
- Day & Night Function: Auto Switch From Color to B/W
- Featuring IR Cut Filter Mechanism for WDR-DN926
- Camera ID: Up To 12 Characters
- Low Speed Shutter Up to 32X
- Adjustable Function: Wide Dynamic Range, Back Light Compensation, Gain Control, White Balance, Digital Slow Shutter
- Dual Voltage: AC24V / DC12V

● Mechanical Dimension



● Technical Specifications

Model	WDR-C926 (PAL/NTSC) COLOR	WDR-DN926 (PAL/NTSC) DAY & NIGHT
CCD Sensor	1/3" Image Sensor	
Pick Up Elements	742(H) x 554(V) pixels	
Horizontal Resolution	520 TV Lines	
Scanning System	NTSC: 15.734 KHz PAL: 15.625 KHz NTSC: 59.94 Hz PAL: 50 Hz	
Sync System	Internal / Linelock	
Minimum Illumination	0.5 Lux (F1.2)	
Day & Night Function	-n/a-	Yes, switching from color to B/W by ICR Filter built in
Wide Dynamic	High / Normal / Custom / Off	
Dynamic Range	120dB Max. 102dB typical	
Iris Control	DC Driver	
Auto White Balance	2000°K ~ 11000°K	
Video Output	1Vp-p, 75 ohms	
S/N Ratio	More than 48dB	
Back Light Compensation	On / Off switchable	
Camera ID	ON (12 characters, position setting) / OFF switchable	
Power Supply	Dual Power AC24V / DC12V (±10%)	
Power Consumption	240mA at DC12V, 3W at AC24V	
Storage Temperature	- 10°C + 60°C	
Operation Temperature	- 10°C + 60°C	
Dimension	125(L) x 53(W) x 52(H) mm	
Weight	320 Kgs	

► Specifications are subjected to change without prior notice.

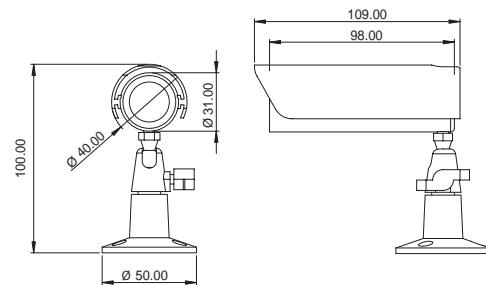
BULLET CAMERA



● Key Features

- Digital Signal Processing (DSP)
- High Sensitivity Color & B / W CCD
- Horizontal Resolution of 420 TV Lines
- Minimum Illumination of 0.1 Lux for color model
- Automatic switchover from color to monochrome under low light for A-6442DN only
- Built in 3.6mm (standard), 4.3mm, 6mm or 8mm lens (option)
- With sunshade to protect from direct exposure to sunlight or rain drop
- Non-condensing coated glass
- Tamper-proof glass

● Mechanical Dimension



● Technical Specifications

Model	A-6442DN (Day & Night)	A-6442C (Color)
Image Device	1/3" High Sensitivity CCD	
Effective Pixels	NTSC/ PAL: 512(H) x 492(V) pixels	
Scanning System	2:1 Interlace NTSC: 15.750KHz, V: 60Hz PAL: 15.625KHz, V: 50Hz	
Horizontal Resolution	420 TV Lines	
Video Output	1.0Vp-p, composite video 75 ohm	
Signal to Noise Ratio	Greater than 48dB	
Synchronization	Internal	
Minimum Illumination	0.1 Lux	
White Balance	Auto 2500°K - 9500°K	
Day Night	SDN (Software Day & Night)	-n/a-
Electronic Shutter	AES 1/ 50 (60) — 1/100,000 sec	
Lens	3.6 mm (standard), 4.3 mm, 6mm, 8mm, (Option)	
Gamma Correction	0.45	
Gain Control	Automatic Gain Control	
Backlight Compensation	Center zone	
Aperture Correction	Vertical & Horizontal	
Power Supply	12 VDC +/- 10%	
Operating Temperature	-10°C + 45°C	
Storage Temperature	-30°C + 60°C	
Dimension	31mm(L) x 100MM(W)	
Weight	150 g	

► Specifications are subjected to change without prior notice.

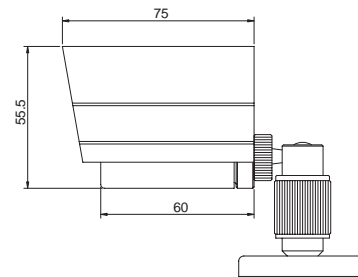
IR NIGHT VISION BULLET CAMERA



● Key Features

- For Use With 1/3" Format Camera, Mini Size
- With 0.5 Lux Color / 0 Lux with IR / F1.8
- With 420 TV Lines Horizontal Resolution
- IR Leds Effective Over 10 Meters Distance

● Mechanical Dimension



● Technical Specifications

Model	ICX-IR286SY
Image Device	1/3" SONY CCD CHIP
Effective Pixels	PAL: 512(H) x 582(V) NTSC: 512(H) x 492(V)
Scanning System	2:1 Interlace NTSC: 15.734 KHz V: 60 Hz PAL: 15.625 KHz ; V: 50 Hz
Horizontal Resolution	420 TV Lines
Video Output	1.0 Vp-p, composite 75 ohm
Signal to Noise Ratio	Greater than 48 dB
Synchronization	Internal
Minimum Illumination	0.5 Lux color / 0 Lux with IR / F1.8
White Balance	Auto
Electronic Shutter	Auto 1/60 (1/50) ~ 1/100,000 sec
Lens	4.3mm (standard), 6mm, 8mm, 12mm (option)
Gamma Correction	0.45
Gain control	Auto Gain Control
Backlight Compensation	Center Zone
Power Supply	DC12V ± 10%
Operating Temperature	-10°C to 45°C
Storage Temperature	-30°C to 60°C
Dimension	50(W) x 60(L) mm
Net Weight	200g

► Specifications are subjected to change without prior notice.

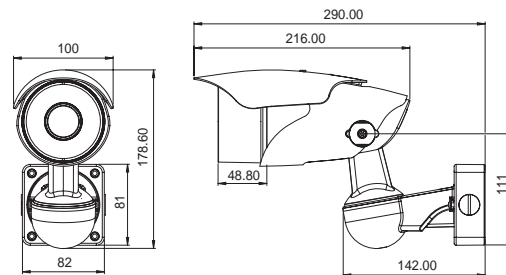
TAMPER PROOF ALL IN ONE BULLET CAMERA



● Key Features

- Choice of 420, 480 and 540 TV lines camera
- High Performance CCD Camera
- Maximum IR effective distance of 50 Meters
- True Day Night Surveillance with ICR filter mechanism
- Built In aspherical varifocal DC Iris lens: 3.5-9.5mm or 9-22mm lens
- Easy to be installed
- Tri-Axis Bracket
- Concealed Cabling Management
- Powered with AC24V / DC12V

● Mechanical Dimension



● Technical Specifications

Model	YV-VIR420C	YV-VIR480C	YV-VIR540C
CCD Sensor	1/3" SONY CCD	1/3" SHARP CCD	1/3" SONY CCD
Effective Pixels	NTSC: 512(V) x 492(V) PAL: 512(V) x 582(V)	NTSC: 771(V) x 492(V) PAL: 752(V) x 582(V)	NTSC: 771(V) x 492(V) PAL: 752(V) x 582(V)
Horizontal Resolution	Color: 420 TVL B/W: 600 TVL	Color: 480 TVL B/W: 600 TVL	Color: 540 TVL B/W: 600 TVL
Lens	3.5 ~ 9.5 mm F1.2, Varifocal DC Iris Lens , 9 ~ 22 mm F1.4, Varifocal DC Iris Lens		
Minimum Illumination	Color: 0.1 Lux , 0 Lux (IR ON)		
Day Night	Yes, automatic switchover from color to monochrome by IR Cut Filter		
Backlight Compensation	Auto		
White Balance	ATW (automatic white balance)		
Synchronization System	Internal		
S/N Ratio	48 dB		
Gamma Correction	0.45		
Video Output	1Vp-p, 75 ohms unbalanced		
IR LEDs	40 pieces		
IR Range Distance	40M ~ 50M with 9 ~ 22 mm Lens , 20M ~ 25M with 3.5 ~ 9.5 mm Lens		
IR Wavelength	850nm		
IP Rated	IP66		
Operating Temperature	-10°C to + 50°C		
Power Consumption	IR OFF: 120mA ± 10% IR ON: 570mA ± 15%		IR OFF: 190mA ± 10% IR ON: 640mA ± 15%
Power Supply	AC24V / DC12V ± 10%		
Bracket	3 dimensional; suitable for wall, ceiling and roof mounting		
Dimensions	178.60(H) x 100(W) x 290(D) mm		
Weight	1.7 Kgs		

► Specifications are subjected to change without prior notice.

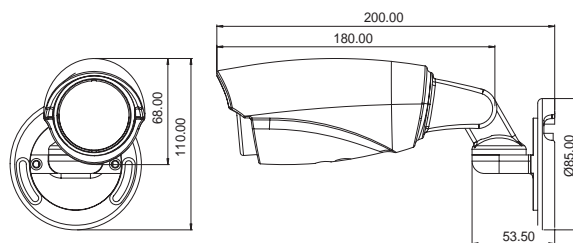
TAMPER PROOF IR NIGHT VISION BULLET CAMERA



Key Features

- Digital Signal Processing (DSP)
- High Sensitivity Camera
- Horizontal Resolution of 420 TV Lines / 480 TV Lines / 540 TV Lines
- Minimum Illumination of 0.01 Lux, color-mode, 0 Lux with LED illuminated
- Maximum Covered Distance: 20M with 6 mm Lens
- Built in Auto IR Control Circuit for stability and accuracy
- Built in 4.3 mm Standard, F1.6 aperture fixed iris lens
- Ideal Camera for shooting at day and night and no focus shift
- With sunsreen to protect from direct exposure to sunlight or rain drop
- Non-condensing coated glass
- Robust construction
- Tamper proof glass and vandal resistant
- Tri-Axis Bracket
- IP66 Rated

Mechanical Dimension



Technical Specifications

Model	BV-IR420	BV-IR480	BV-IR525
CCD Sensor	1/3" High Sensitivity Color CCD		
Effective Pixels	NTSC: 512 (V) x 492 (V) PAL: 512 (V) x 582 (V)	NTSC: 771 (H) x 492 (V) PAL: 752 (H) x 582 (V)	NTSC: 771 (H) x 492 (V) PAL: 752 (H) x 582 (V)
Scanning System	2:1 Interlace NTSC: 15.750KHz, V: 60Hz 2:1 Interlace PAL: 15.625KHz, V: 50Hz		
Horizontal Resolution	420 TV Lines	480 TV Lines	540 TV Lines
Video Output	1Vp-p Video composite, 75 ohm		
Minimum Illumination	0.01 Lux ; 0 Lux (LED ON)		
IR LEDs	24 Pieces		
IR Wavelength	850 nM		
IR Range	20M		
Signal to Noise Ratio	Greater than 50dB		
Synchronization	Internal		
White Balance	Auto Tracking White Balance 2500K - 9500K		
Electronic Shutter	AES 1/60 (50) - 1/100,000 sec.		
Lens	Built in fixed lens 4.3mm (Standard), F1.6		
Gamma Correction	0.45		
Gain Control	Automatic Gain Control		
Backlight Compensation	Center Zone		
Aperture Correction	Horizontal & Vertical		
Power Supply	DC12V ± 10%		
Storage Temperature	-30°C - +60°C		
Operating Temperature	-10°C - +45°C		
Dimension	190(L) x 60(W) x 110(H) mm		
Net Weight	800g		

► Specifications are subjected to change without prior notice.

IR NIGHT VISION BULLET CAMERA



21 pieces



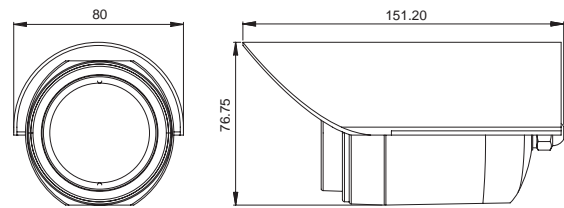
35 pieces



● Key Features

- IP68 Rated Waterproof Housing
- Digital Signal Processing
- Horizontal Resolution of 420 / 480 / 540 TV Lines
- Built in standard 4, 6, 8mm, 12mm (option) Lens
- With Choice of 21 units and 35 units of LEDs
- With Effective Distance of 20M, and 35M indoor / outdoor range
- Ideal Camera for all day and night time surveillance
- Non-condensed glass

● Mechanical Dimension



● Technical Specifications

Model	ICX-IR380	ICX-IR480	ICX-IR800
Effective Pixels	ICX-IR380: NTSC: 512 (H) x 492 (V) / PAL: 512 (H) x 492 (V), 1/3" CCD Image Sensor ICX- IR480: NTSC: 771 (H) x 492 (V) / PAL: 753 (H) x 582 (V), 1/3" CCD Image Sensor ICX-IR800: NTSC: 771 (H) x 492 (V) / PAL: 753 (H) x 582 (V), 1/3" CCD Image Sensor		
Resolution	ICX-IR380: 420 TV Lines ICX-IR480: 480TV Lines ICX-IR800: 540 TV Lines		
Minimum Illumination	0.5 Lux F2.0, day mode, 0 Lux night mode		
S/N Ratio	More than 48dB (AGC Off)		
Electronic Shutter	1/60 (50) to 1/100,000sec		
Gamma	0.45		
White Balance	Auto White Balance		
Video Output	1.0Vp-p composite, 75 ohm		
Lens	Fixed Lens 4mm (standard) 6mm, 8mm, 12mm (option)		
Backlight Compensation	Auto		
IR LED Unit	21 pieces or 35 pieces		
IR Distance	20M: 21 pieces 35M: 35 pieces		
IR Spectrum	850 nM		
IP Rated	IP 68		
Storage Temperature	-30°C to + 60°C		
Operating Temperature	-10°C to + 50°C		
Power Source	DC12V ± 10%		
Power Consumption	90mA (IR Off), 270mA (IR ON)		
Dimension	151(L) x 68(W) x 70Ø(mm)		
Weight	500g.		

► Specifications are subjected to change without prior notice.

DAY NIGHT BULLET CAMERA



21 pieces



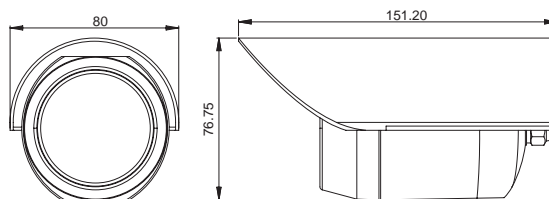
35 pieces



Key Features

- IP68 Rated Waterproof Housing
- Digital Signal Processing
- Horizontal Resolution of 420 / 480 / 540 TV Lines
- Built in standard 4, 6, 8mm, 12mm (option) Lens
- With Choice of 21 units and 35 units of LEDs
- With Effective Distance of 20M, and 35M indoor/outdoor range
- Ideal Camera for all day and night time surveillance
- Non-condensed glass
- IR Cut filter built in

Mechanical Dimension



Technical Specifications

Model	ICX-IR380C	ICX-IR480C	ICX-IR800C
Effective Pixels	ICX-IR380C: NTSC: 512 (H) x 492 (V)/PAL: 512 (H) x 492 (V), 1/3" ± CCD Image Sensor ICX-IR480C: NTSC: 771 (H) x 492 (V)/PAL: 753 (H) x 582 (V), 1/3" ± CCD Image Sensor ICX-IR800C: NTSC: 771 (H) x 492 (V)/PAL: 753 (H) x 582 (V), 1/3" ± CCD Image Sensor		
Resolution	ICX-IR380C: 420 TV Lines ICX-IR480C: 480TV Lines ICX-IR800C: 540 TV Lines		
Minimum Illumination	0.5 Lux F2.0, day mode, 0 Lux night mode		
Day Night	Yes, automatic switchover from color to monochrome by IR Cut Filter		
S/N Ratio	More than 48dB (AGC Off)		
Electronic Shutter	1/60 (50) to 1/100,000sec		
Gamma	0.45		
White Balance	Auto White Balance		
Video Output	1.0Vp-p composite, 75 ohm		
Lens	Fixed Lens 4mm (standard) 6mm, 8mm, 12mm (option)		
BLC	Auto		
IR LED Unit	21 pieces or 35 pieces		
IR Distance	20M: 21 pieces 35M: 35 pieces		
IR Spectrum	850nm		
IP Rated	IP 68		
Storage Temperature	-30°C to + 60°C		
Operating Temperature	-10°C to + 50°C		
Power Source	DC12V ± 10%		
Power Consumption	90mA (IR Off), 270mA (IR ON)		
Dimension	151(L) x 68(W) x 70Ø (mm)		
Weight	500g.		

► Specifications are subjected to change without prior notice.

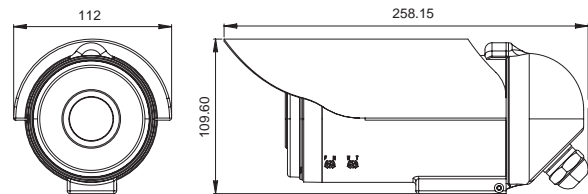
DAY NIGHT BULLET CAMERA



Key Features

- IP68 Rated Waterproof Housing
- Aesthetically appearing with concealed wiring in the back of camera body for nimble operation and assembling
- Digital Signal Processing
- Horizontal Resolution of 420 TV Lines/ 480TV Lines / 540 TV Lines
- 1/3" Sony Exview HAD CCD available for ICX-4VIR780EX, ICX-9VIR780EX only
- Built in varifocal lens 9 ~ 22 mm / F1.8 or 4~9 mm / F1.8 Lens
- With Effective Distance of 60M, and 35M indoor/outdoor range
- Ideal Camera for all day and night time surveillance
- Non-condensed glass
- Featuring IR Cut filter built in mechanism

Mechanical Dimension



Technical Specifications

Model	ICX-4VIR720, ICX-4VIR780 ICX-4VIR800	ICX-9VIR720, ICX-9VIR780 ICX-9VIR800	ICX-4VIR780EX ICX-9VIR780EX
CCD Sensor	1/3" Image CCD Sensor		1/3" Sony Exview HAD CCD
Effective Pixels	420TVL Lines: NTSC: 512(H) x 492(V) / PAL: 512(H) x 582(V) 480TV Lines: NTSC: 771(H) x 492(V) / PAL: 753(H) x 582(V) 540TV Lines: NTSC: 771(H) x 492(V) / PAL: 753(H) x 582(V)		
Resolution	ICX-4VIR720 / ICX-9VIR720: 420TV Lines ICX-4VIR780 / ICX-9VIR780 / ICX-4VIR780EX / ICX-9VIR780EX: 480TV Lines ICX-4VIR800 / ICX-9VIR800: 540TV Lines		
Minimum Illumination	0.5 Lux F2.0, day mode, 0 Lux night mode (with ICR filter)		0.003: Lux F1.2 day mode, 0 Lux night mode (with ICR filter)
S/N Ratio	More than 48dB (AGC Off)		
Electronic Shutter	1/60 (1/50) to 1/100,000 sec		
Gamma	0.45		
White Balance	Auto White Balance		
Video Output	1.0Vp-p composite 75 ohm		
Day Night	Yes, ICR CUT removable filter for switching to color or monochrome		
Lens	4V series Varifocal 4 ~ 9 mm / F1.8 lens 9V Series Varifocal 9 ~ 22 mm / F1.8 lens		
BLC	Auto		
IR LED Unit	56 pieces		
IR Distance	35 ~ 45 Meters		60 Meters
IR Spectrum	850nm		
IP Rated	IP 68		
Storage Temperature	-30°C to +60°C		
Operating Temperature	-10°C to +50°C		
Power Source	DC12V±10% ; AC24V / DC12V±10% (option)		
Power Consumption	130mA (IR OFF), 610mA (IR ON)		160mA (IR OFF), 640mA (IR ON)
Dimension	200(L) x 870(W) x 100(H)		
Weight	1230g		

► Specifications are subjected to change without prior notice.

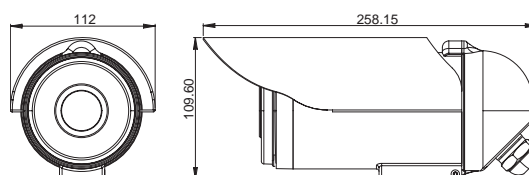
DAY NIGHT BULLET CAMERA



● Key Features

- IP68 Rated Waterproof Housing
- Aesthetically appearing with concealed wiring in the back of camera body for nimble operation and assembling
- Digital Signal Processing
- Horizontal Resolution of 420 TV Lines/ 480TV Lines / 540 TV Lines
- Built in fixed lens 4mm(standard), 6mm, 8 mm (12mm, 16 mm option)
- With Effective Distance of 40 ~ 45M indoor/outdoor range
- Ideal Camera for all day and night time surveillance
- Non-condensed glass
- Featuring IR Cut filter built in mechanism

● Mechanical Dimension



● Technical Specifications

Model	ICX-FIR720	ICX-FIR780	ICX-FIR800
CCD Sensor	1/3" Image CCD Sensor		
Effective Pixels	420TVL Lines: NTSC: 512(H) x 492(V)/PAL: 512(H) x 582(V) 480TV Lines: NTSC: 771(H) x 492(V)/PAL: 753(H) x 582(V) 540TV Lines: NTSC: 771(H) x 492(V)/PAL: 753(H) x 582(V)		
Resolution	ICX-FIR720: 420TV Lines ICX-FIR780: 480TV Lines ICX-FIR800: 540TV Lines		
Minimum Illumination	0.5 Lux F2.0, day mode, 0 Lux night mode (with ICR filter)		
S/N Ratio	More than 48dB (AGC Off)		
Electronic Shutter	1/60 (1/50) to 1/100,000 sec		
Gamma	0.45		
White Balance	Auto White Balance		
Video Output	1.0Vp-p composite, 75 ohm		
Day Night	Yes, ICR CUT removable filter for switching to color or monochrome		
Lens	Fixed lens 4mm (standard), 6mm, 8 mm (12mm, 16 mm option)		
BLC	Auto		
IR LED Unit	70 pieces		
IR Distance	40~45 Meters		
IR Spectrum	850nm		
IP Rated	IP 68		
Storage Temperature	-30°C to +60°C		
Operating Temperature	-10°C to +50°C		
Power Source	DC12V ± 10% ; AC24V/DC12V ± 10%(option)		
Power Consumption	90mA(IR OFF), 690mA(IR ON)		
Dimension	200(L) x 870(W) x 100(H)		
Weight	1230g		

► Specifications are subjected to change without prior notice.

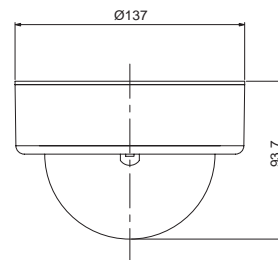
LEO VANDAL DOME, SUPREME HIGH RESOLUTION 540 TVL, DAY & NIGHT WITH ICR



● Key Features

- 540 TVL Horizontal Resolution
- Compact & Vandal Resistant Construction
- Choice of SONY Super HAD or SONY Exview HAD CCD
- IP 66 Rated
- Suitable for indoor and outdoor use with a roof cover.
- DSP controls for BLC, white balance, and gain control.
- Integration of varifocal DC iris lens 3.7~12mm
- Day & Night switchable with ICR mechanism
- Fitted with LED for a better illumination at night

● Mechanical Dimension



● Technical Specifications

Model	CDV-3VD580IR	CDV-3VD580IR/EX
Image Sensor	CDV-3VD580IR: 1/3" SONY CCD CDV-3VD580IR/EX: 1/3" SONY Exview HAD CCD	
Effective Pixels	PAL: 752(H) x 582(V) NTSC: 771(H) x 492(V)	
Scanning Element	2:1 Interlace V: 50Hz, 15.625KHz 2:1 Interlace V: 60Hz, 15.750KHz	
Synchronization	DC: Internal, AC: Linelock (option)	
Video Output	1 Vp-p, 75 ohms unbalanced	
Resolution	540 TVL	
Minimum Illumination	0.1 Lux Color F1.4	0.05 Lux Color F1.4
Electronic Shutter	auto	
BLC	auto, center area	
Gamma Correction	0.45	
White Balance	Auto Tracing 2500 K - 9500 K	
Gain Control	Auto	
IR Effective Range	12M	
Day & Night	Color to monochrome switched by ICR Filter, under low light	
Built in Lens	3.7 ~ 12 mm Varifocal DC Iris Lens	
Operating Temperature	-10°C - +45°C	
Humidity	Less Than 80% RH	
Mechanical Dimension	H: 93.7mm x 137Ø	
Power Supply	DC12V ± 10% tolerance	
Power Consumption	300mA	
Weight	740g	

► Specifications are subjected to change without prior notice.

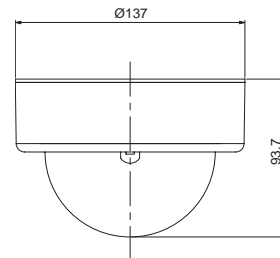
LEO VANDAL DOME, WITH VARIFOCAL LENS



● Key Features

- Unique design with waterproof housing IP66 rated
- Full range of 420 TVL and 540 TVL color & 420 TVL monochrome model
- Fitted with SONY CCD
- Day Night function is available for color models
- Integrated Varifocal Lens with 4 ~ 9 mm
- Burglarproof screw
- Dual Power is available upon request
- SONY Exview HAD CCD is available upon request for super low light

● Mechanical Dimension



● Technical Specifications

Model	CDV-3VD420	CDV-3VD380 CDV-3VD580	CDV-3VD380/DN CDV-3VD580/DN
Image Sensor	1/3" SONY CCD		
Effective Pixels	CCIR: 500(H) x 582(V) EIA: 500(H) x 492(V)	PAL: 500(H) x 582(V) , NTSC: 510(H) x 492(V) for 420 TVL PAL: 752(H) x 582(V) , NTSC: 768(H) x 494(V) for 540 TVL	
Scanning System	2:1 Interlace, V: 50Hz, H: 15.625KHz '2:1 Interlace V: 60Hz, H: 15.750KHz		
Video Output	1 Vp-p, 75 ohms unbalanced		
Synchronization	DC: Internal, AC: Linelock (option)		
Resolution	420 TVL	CDV-3VD380: 420 TVL CDV-3VD580: 540 TVL	CDV-3VD380/DN: 420TVL CDV-3VD580/DN: 540TVL
Minimum Illumination	0.01 Lux F1.4	0.1 Lux F1.4	0.1 Lux F1.4
Day & Night Function	---n/a---	---n/a---	Yes with CDV-3VD580/DN, switching from color to B/W under the required light level by software
White Balance	---n/a---	Auto Tracing 2500°K - 9500°K	Auto Tracing 2500°K - 9500°K
BLC	center area		
Gain Control	Auto		
S/N ratio	50dB	more than 48dB (AGC off)	
Gamma Correction	0.45		
Lens	Built in Varifocal Lens 4 ~ 9 mm		
Operating Temperature	10°C - +45°C		
Power Supply	DC12V ± 10%		
Power Consumption	140mA		
Dimension	H: 93.7 (mm) x 137Ø		
Weight	740g.		

▶ Specifications are subjected to change without prior notice.

ANTI-GRIP DESIGN VANDAL DOME CAMERA



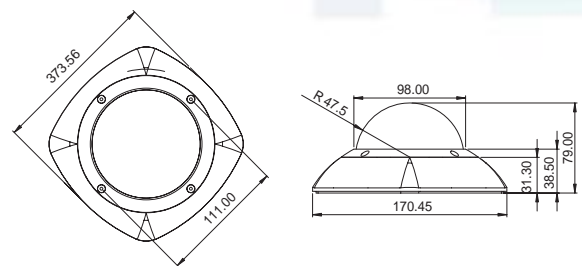
VD-B01:
WALL MOUNT BRACKET



Key Features

- Compact & Vandal Resistant Construction
- Suitable for indoor and outdoor use with an external bracket
- DSP controls for BLC, white balance and gain control
- Anti-Grip with Tri-Axis Gimble
- IP66 Rated Housing
- Unique Burglar Proof screw
- Integrated of Varifocal DC Iris 3.5~9.5mm Lens, 3~9 mm Lens or 9~22 mm Lens (Option)
- Day & Night switchable with ICR mechanism for VD-3VIR 420 / 480 / 525
- Additional video RCA for service
- Fitted with LED for a better illumination at night
- UTP (Option)
- VD-B01 (Optional bracket)

Mechanical Dimension



Technical Specifications

Model	VD-3V420, VD-3V480, VD-3V540	VD-3VIR420, VD-3VIR480, VD-3VIR540
Image Sensor	1/3" CCD	
Effective Pixels	420 TV Lines PAL: 500(H) x 582(V) NTSC: 510(H) x 492(V) 480 / 540 TV Lines PAL: 752(H) x 582(V) NTSC: 771(H) x 492(V)	
Resolution	VD-3V420, VD-3VIR420: 420TV Lines VD-3V480, VD-3VIR480: 480TV Lines VD-3V540, VD-3VIR540: 540TV Lines	
Scanning System	2:1 Interlace V: 50Hz 15.525KHz, 2:1 Interlace V: 50Hz 15.750KHz	
Synchronization	DC: Internal AC: Linelock (option)	
Video Output	1Vp-p, 75 ohms unbalanced	
Minimum Illumination	0.01 Lux F1.4 for 420 / 480 TV Lines, 0.05 Lux F1.4 for 540 TV Lines	
Electronic Shutter	Auto: 1/50 (60) ~ 1/100,000 sec.	
White Balance	Auto Tracking 2500°K ~ 9500°K	
BLC	Auto, Center area	
Gamma Correction	0.45	
Gain Control	Auto	
LED	28 pieces	
IR Effective Range	Not available	25M for VD-3VIR420 / VD-3VIR480 / VD-3VIR540
DAY & NIGHT	Not available	Color to monochrome switched by ICR filter under the low light
Built in Lens	3 ~ 9mm DC Iris varifocal Lens for VD-3V420, VD-3V480 3.5 ~ 9.5mm DC Iris varifocal Lens for VD-3V540 9 ~ 22mm (Option)	3.5 ~ 9.5 mm DC Iris varifocal Lens 9 ~ 22mm (Option)
S/N Ratio	More than 58dB (AGC off)	
Operating Temperature	-10°C + 45°C	
Storage Temperature	-10°C + 45°C	
Power Supply	DC12V ± 10% (VD-3V420, VD-3V480) Option: AC24V / DC12V ± 20% ; Dual Power (VD-3V540)	AC24V / DC12V ± 20% (Dual Power)
Power Consumption	VD-3V420: 75mA under DC12V VD-3V480: 125mA under DC12V VD-3V540: 220mA under DC12V	VD-3VIR420: IR OFF: 250 mA under DC12V IR ON: 500 mA under DC12V VD-3VIR480: IR OFF: 240mA under DC12V IR ON: 480mA under DC12V VD-3VIR540: IR OFF: 220mA under DC12V IR ON: 650mA under DC12V
Dimension L x W mm	150mm x 8mm	
Weight	740g	

► Specifications are subjected to change without prior notice.

ANTI-GRIP DESIGN, TRI-AXIS VANDAL PROOF DOME CAMERA



VD-420
VD-480
VD-525



VD-IR420
VD-IR480
VD-IR525



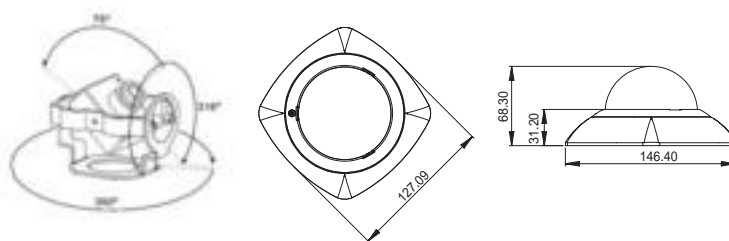
DC-420
DC-480



Key Features

- Ultra Compact and Light Weight
- Anti-Grip with Tri-Axis Gimble
- IP66 with Waterproof Housing
- With 1/3" ± CCDs
- Stable Picture Quality
- Vandal Proof Design for VD-series, ABS module for DC-series
- Dual Power (option)

Mechanical Dimension



Technical Specifications

Model	VD-420, VD-480 VD-525	VD-IR420, VD-IR480 VD-IR525	DC-420 DC-480
Image Sensor	1/3" CCD		
Resolution	VD-420 / VD-IR420 / DC420: > 420 TV Lines VD-480 / VD-IR480 / DC480: > 480 TV Lines VD-525/VD-IR525: > 540 TV Lines		
Effective Pixels	420 TV Lines PAL: 500(H) x 582(V) NTSC: 510(H) x 492(V) 480 / 540 TV Lines PAL: 752(H) x 582(V) NTSC: 771(H) x 492(V)		
Scanning System	2:1 Interlace		
Synchronization	Internal		
S/N Ratio	More than 48 dB		
Gamma Correction	0.45		
Shutter Control	AES: 1/50 (60) - 1/100,000 sec.		
Minimum Illumination	0.1 Lux	0 Lux (LED ON)	0.1 Lux
IR LED	Not available	850nm x 18 pieces	Not available
Lens Mount	Board Lens 4.3mm (standard), 3.6mm, 6mm, 8mm (option)		
Auto Gain Control	Full Auto		
Backlight Compensation	Full Auto		
Power Requirement	Standard: DC12V ±10%		
Power Consumption	75mA + 10% under DC12V	IR OFF: 75 mA IR ON: 255 mA ± 10% under DC12V	75mA + 10% under DC12V
Construction	Vandal resistant		ABS
Aperture Correction	Vertical & Horizontal		
Storage Temperature	-30°C +60°C		
Operating Temperature	-10°C +45°C		
Dimension LxWxH mm	128mm x 128mm x 80mm		
Weight	430g		

► Specifications are subjected to change without prior notice.

TRI-AXIS DOME



CORNER MOUNT



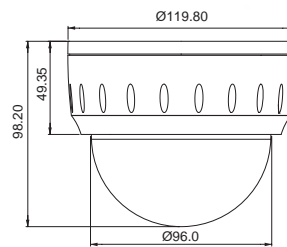
WALL MOUNT



Key Features

- Wide Dynamic Range for DC-26WD
- Producing High Quality Video Image with full function DSP
- Built in 3-Axis Gimble Bracket
- Optional UTP built in
- Flexible design for various installation; surface mount, flush, corner mount, pendant mount and wall mount.
- Optional easy installation pipe

Mechanical Dimension



Technical Specifications

Model Number	DC-26HQ	DC-26WD
Image Sensor	1/3" SONY CCD	Pixim Orca Sensor
Scanning System	NTSC: 2:1 Interface, H15.734KHz/V.59.9Hz PAL: 2:1 Interface, H15.625KHz/V.50Hz	NTSC: 2:1 Interface, H15.734KHz/V.59.9Hz PAL: 2:1 Interface, H15.625KHz/V.50Hz
Effective Pixels	NTSC: 768(H) x 494(V) PAL: 752(H) x 582(V)	NTSC: 720(H) x 540(V) PAL: 720(H) x 540(V)
Wide Dynamic	-n/a-	Yes
OSD	-n/a-	Yes
Resolution	540 TV Lines	504 TV Lines
Minmum Illumination	0.5 Lux F1.2	1.0 Lux F1.2 (AGC Boost)
S/N Ratio	50 dB	> 42 dB
Back Light Compensation	Central Area for DC IRIS lens	Area x 4
Lens	Varifocal 4~9mm F1.2	Varifocal 4~9mm F1.2
Exposure Control	DC Type Auto IRIS Control	DC Type Auto IRIS Control
Sync System	Internal / Line Lock	INT/L.L 47.5Hz-52Hz
Line Lock (Phase Adj. Range)	0°C~270°C	0°C~270°C
Gamma Compensation	0.45	0.45
Video Output	1.0Vpp, 75Ω unbalanced	1.0Vpp, 75Ω unbalanced
White Balance	Automatic White Balance	ATW, MWB, 1-Touch
AWB Normal Range	2700°K ~ 11000°K	2200°ΔK ~ 7500°ΔK 2000°K ~ 11000°ΔK
Power Source	AC24V / DC12V ± 20%	
Power Consumption	4.2 W(Max)	4.2 W(Max)
Operating Temperature	-10°C ~ +50°C	-10°C ~ +50°C
Storage Temperature	-20°C ~ +60°C	-20°C ~ +60°C

► Specifications are subjected to change without prior notice.

Accessory for DC-26HQ, DC-26WD:



Installation Pipe



White pendant mount
Drop monuting adaptor



White 4S box
mounting adaptor



White corner
mounting adaptor



White flush
mounting adaptor



Goose Neck



L Type Wall Mount

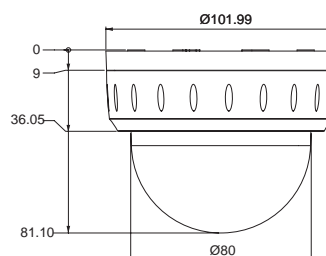
TRI-AXIS DOME



● Key Features

- 1/3" SONY CCD with 420 TVL and 480 TVL Horizontal Resolution
- Producing High Quality Video Image with full function DSP
- Built in 3-Axis Gimble Bracket
- Optional UTP built in
- Optional easy installation pipe

● Mechanical Dimension



● Technical Specifications

Model Number	DC-2660 P/N	DC-2680 P/N
Image Sensor	1/3" SONY CCD	1/3" SONY CCD
Scanning System	NTSC: 2:1 Interface, H15.734KHz/V.59.9Hz PAL: 2:1 Interface, H15.625KHz/V.50Hz	NTSC: 2:1 Interface, H15.734KHz/V.59.9Hz PAL: 2:1 Interface, H15.625KHz/V.50Hz
Effective Pixels	NTSC: 510(H) x492(V) PAL: 500(H) x582(V)	NTSC: 768(H) x494(V) PAL: 752(H) x582(V)
Resolution	420 TV Lines	480 TV Lines
Minimum Illumination	0.5 Lux F1.6	1.0 Lux F1.6
S/N Ratio	48 dB	48 dB
Back Light Compensation	Central Area for DC IRIS lens	Central Area for DC IRIS lens
Lens	Varifocal 4~9 mm Lens F1.5	Varifocal 4~9 mm Lens F1.5
Exposure Control	DC Type Auto IRIS Control	DC Type Auto IRIS Control
Sync System	INT	INT
Gamma Compensation	0.45	0.45
Video Output	1.0Vpp, 75Ω unbalanced	1.0Vpp, 75Ω unbalanced
White Balance	Automatic White Balance 2500°K ~ 9700°K	Automatic White Balance 2500°K ~ 9700°K
Power Source	DC12V±10%	DC12V±10%
Power Consumption	1.6 W(Max)	1.8 W(Max)
Operating Temperature	-10°C ~ +50°C	-10°C ~ +50°C
Storage Temperature	-20°C ~ +60°C	-20°C ~ +60°C

► Specifications are subjected to change without prior notice.

Accessory for DC-2660 P/N , DC-2680 P/N:



Installation Pipe



White 4S box
mounting adaptor



L Type Wall Mount

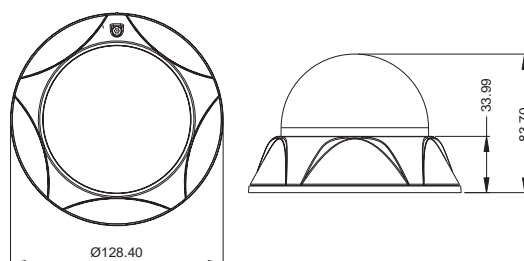
TRI-AXIS DOME WITH IR MICRO CONTROL



Key Features

- Ultra compact and light weight with Tri-Axis bracket
- Horizontal resolution of 420TV Lines / 540 TV Lines
- With 28 units high intensity infra-red LED light
- IR Cut filter built in for Day Night model
- IR Range: 20M-30M
- Ideal camera for all day & night time surveillance
- Dual power with AC24V / DC12V
- Additional Video RCA for Service
- UTP (Option)

Mechanical Dimension



Technical Specifications

Model	DIR-290M DIR-290HQ	DIR-3V290M DIR-3V290HQ
Image Sensor	1/3" Sony CCD	
Resolution	DIR-290M / DIR-3V290M for 420TV Lines DIR-290HQ / DIR-3V290HQ for 540TV Lines	
Effective Pixels	NTSC: 510(H) x 492(V) PAL: 512(H) x 582(V) for 420 TV Lines	
	NTSC: 768(H) x 494(V) PAL: 752(H) x 582(V) for 540 TV Lines	
Scanning System	2:1 Interlace	
Synchronization	Internal	
Video Output	1 Vp-p, 75 ohm Load	
S/N Ratio	More than 52dB	
Gamma Correction	0.45	
Minimum Illumination	0.1 Lux / F1.2 ; IR ON = 0 Lux	
Electronic Shutter	Auto and up to 1/100,000 Sec.	
Lens Mount	Fixed Lens 3.6 mm lens F1.6 Aspherical Lens	Varifocal 3.5 ~ 9.5 mm Lens with IR-Cut
White Balance	Auto	ON / OFF
Auto Gain Control	Auto	ON / OFF
Backlight	Auto	ON / OFF
Power Requirement	AC24V / DC12V (Dual Power) ± 20 %	
Dimension L x W x H	128.5mm x 128.5mm x 84mm	
Weight	330 g	

► Specifications are subjected to change without prior notice.

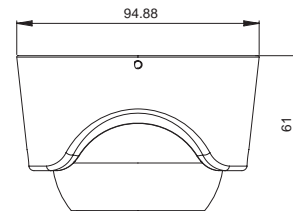
IR MINI DOME



● Key Features

- Digital Signal Processing
- Horizontal Resolution of 420 TV Lines / 480TV Lines
- Built in standard lens 4, 6, 8 mm 12 mm (option) Lens
- With Effective Distance of 15 ~ 20 M, and 35 ~ 40 M indoor/outdoor range
- Ideal Camera for all day and night time surveillance
- Non-condensed glass

● Mechanical Dimension



● Technical Specifications

Model	CF630IR-20M	CF660IR-20M	CF800IR-20M
Effective Pixels	NTSC: 512(H) x 492(V) / PAL: 512(H) x 492(V), 1/3" CCD		
Resolution	420 TV Lines	480 TV Lines	540 TV Lines
Minimum Illumination	0.5 Lux F2.0, day mode, 0 Lux night mode		
S/N Ratio	More than 48dB (AGC Off)		
Electronic Shutter	1/60(1/50) to 1/100,000 sec		
Gamma	0.45		
White Balance	Auto White Balance		
Video Output	1.0Vp-p composite, 75 ohm		
Lens	Fixed Lens 4mm (standard) 6,8mm, 12mm (option)		
IR Cut Mechanism (option)	CF-630IRC: 420 TV lines CF-660IRC: 480 TV lines CF-800IRC: 540 TV lines		
Backlight Compensation	Auto		
IR LED Unit	21 pieces		
IR Distance	15-20 Meters		
IR Spectrum	850nm		
Storage Temperature	-30°C to + 60°C		
Operating Temperature	-10°C to + 50°C		
Power Source	DC12V ± 10%		
Power Consumption	90mA (IR Off), 270mA (IR ON)		
Dimension	95Ø x 47.1(D) x 75.8(H) (mm)		
Weight	500g		

► Specifications are subjected to change without prior notice.

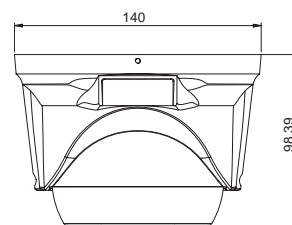
IR VARIFOCAL CEILING DOME



● Key Features

- Digital Signal Processing
- Horizontal Resolution of 420 TV Lines / 480TV Lines / 540 TV Lines
- Built in Varifocal 4~9 mm Lens
Varifocal 9~22 mm Lens (option)
- With Effective Distance of 15~20 M, and 35~40 M indoor/outdoor range
- Ideal Camera for all day and night time surveillance
- Non-condensed glass
- IR Cut filter mechanism

● Mechanical Dimension



● Technical Specifications

Model	CF-4VIR720 CF-9VIR720	CF-4VIR780 CF-9VIR780	CF-4VIR800 CF-9VIR800
Effective Pixels	NTSC: 512(H) x 492(V) / PAL : 512(H) x 582(V), 1/3" CCD NTSC: 771(H) x 492(V) / PAL : 753(H) x 582(V), 1/3" CCD		
Resolution	420TV Lines	480TV Lines	540 TV Lines
Minimum Illumination	0.5 Lux F2.0, day mode, 0 Lux night mode (with ICR filter)		
S/N Ratio	More than 48dB (AGC Off)		
Day Night	Yes, ICR CUT removable filter for switching to color or monochrome		
Electronic Shutter	1/60 (1/50) to 1/100,000 sec		
Gamma	0.45		
White Balance	Auto White Balance		
Video Output	1.0 Vp-p composite, 75 ohm		
Lens	Varifocal 4 ~ 9mm lens 9 ~ 22mm (Option) lens		
Backlight Compensation	Auto		
IR LED Unit	56 pieces		
IR Distance	35~40 Meters		
IR Spectrum	850nm		
IP Rated	IP 68		
Storage Temperature	-30°C to +60°C		
Operating Temperature	-10°C to +50°C		
Power Source	DC12V ± 10%		
Power Consumption	130mA (IR OFF), 610mA (IR ON)		
Dimension	140(D) x 77(H) mm		
Weight	800g		

► Specifications are subjected to change without prior notice.

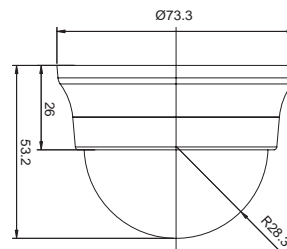
MINI COLOR DOME



● Key Features

- Light weight, compact mini dome
- Intelligent Auto Exposure
- No color rolling
- Sharp and Crispy Picture Image
- Delivering High Quality 420 TVL Color Picture Resolution
- Low power consumption of 60mA

● Mechanical Dimension



● Technical Specifications

Model	DC-240N(NTSC)	DC-280P(PAL)
Pick Up Device	1/4" Image Sensor	1/3" Image Sensor
Picture Elements	656(H) x 492(V)	628(H) x 586(V)
Horizontal Resolution	420 TVL	
Sensitivity	0.2 Lux / F2.0	
S/N Ratio	> 50dB (AGC OFF)	
Synchronization System	Internal	
Backlight Compensation	Auto	
Auto Gain Control	Auto	
Electronic Shutter	1/60s - 1/50,000 sec.	
Auto White Balance Range	2500 K - 9000 K	
Gamma Correction	0.45	
Video Output	1.0Vp-p / 75 ohms	
Lens	Fixed Lens 3.6mm	Fixed Lens 4.3mm
Operating Temperature	0°C - +50°C	
Operation Humidity	20 - 80%	
Power Consumption	60mA, 1W	
Power Supply	DC12V ± 10%	
Dimension	73D x 51H (m/m)	

► Specifications subject to change without prior notice.

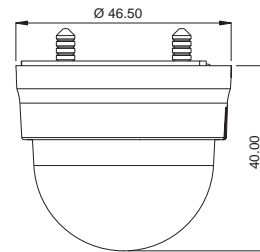
MINI WIDE ANGLE DOME



Key Features

- A full line up from 420TV Lines, 480 TV Lines and resolution, providing fine, crisp and vivid high resolution image
- Outstanding artwork and mechanical design, suitable for all installations
- Selectable lenses providing a wide range selection for different viewing applications
- Built-in horizontal/ vertical adjusting mechanism for multi-dimensional adjustment
- Advanced wide range Auto Tracing White Balance (ATW), automatically adjusts white balance according to the color temperature in each environment
- Smart digital control Auto Back Light Compensation (BLC)
- Dynamic spherical option from 80, 130, 185 degree (diagram) to deliver crisp and sharp resolution
- Simple & quick combination providing user-friendly installation & maintenance
- Special design distortion-free acrylic dome cover

Mechanical Dimension



Technical Specifications

Model	DM-4080 , DM-4130, DM-4185 PAL / NTSC	DH-4080, DH-4130, DH-4185 PAL / NTSC
Image Device	1/4" interline transfer super HAD CCD	
Effective Pixels	510(H) x 492(V) NTSC 768(H) x 494(V) NTSC	500(H) x 582(V) PAL 752(H) x 582(V) PAL
Scanning System	NTSC: 2:1 Interlace PAL: 2:1 Interlace	
Sync System	Internal lock	
Resolution	420 TV Lines	480 TV Lines
AGC	Auto Gain 0~36dB	
S/N Ratio	Better than 48dB	
Electronic Shutter	NTSC: 1/60 ~ 1/100,000 sec PAL: 1/50 ~ 11/100,000 sec	
White Balance Control	ATW (3200°K - 7500°K)	
Gamma Compensation	0.45	
Minimum Illumination	2 Lux at F2.2 (30 IRE)	
Digital Noise Reduction	Automatic	
Video Output signal	Composite: 1Vp-p at 75 Ohm	
Viewing Angle	DM-4080 / DH-4080=80° DM-4130 / DH-4130=130° DM-4185 / DH-4185=185°	
Lens mount	80/130/185 degree fixed board lens (default) at F2.2	
Power Range	DC12V ± 10%	
Power Consumption	Under 50mA	
Operation Temperature	-10 °C - + 50°C	
Overall Camera Dimensions	46 x 40 mm	

► Specifications are subjected to change without prior notice.

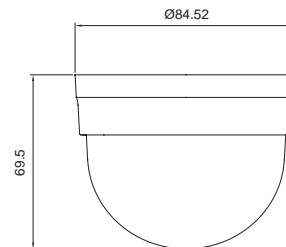
MINI WIDE ANGLE VARIFOCAL DOME



● Key Features

- 420TV Lines or 540 TV Lines resolution, providing fine, crisp and vivid high resolution image
- Advanced digital noise reduction delivers low noise image under low Lux environment
- Outstanding mechanical design, suitable for all installations
- Selectable lenses providing a wide range selection for different viewing applications
- Built-in horizontal/ vertical adjusting mechanism for multi-dimensional adjustment
- Advanced wide range Auto Tracing White Balance (ATW), automatically adjusts white balance according to the color temperature in each environment
- Smart digital control Auto Back Light Compensation (BLC)
- Dynamic spherical Vari-focal A.I lens to deliver sharp resolution
- Simple & quick combination providing user-friendly installation & maintenance
- Special design distortion-free acrylic dome cover
- Outstanding signal to noise ratio better than 50 dB

● Mechanical Dimension



● Technical Specifications

Model	DC-1260 (PAL / NTSC)	DC-1280 (PAL / NTSC)
Image Device	1/3" interline transfer super HAD CCD	
Effective Pixels	510(H) x 492(V) NTSC 500(H) x 582(V) PAL	811(H) x 508(V) NTSC 795(H) x 596(V) PAL
Scanning System	NTSC: 2:1 Interlace PAL: 2:1 Interlace	
Sync System	Internal lock	
Resolution	420 TV Lines	540 TV Lines
AGC	Auto Gain 36dB	
S/N Ratio	Better than 50dB	
ALC / AE	ALC (1/60) / AES NTSC ALC (1/50) AES PAL	
White Balance Control	ATW (2500°K - 9000°K) / AWB	
Gamma Compensation	0.45/1	
Minimum Illumination	0.01lux at F1.2(B/W mode, AGC on, sense up on) 0.1lux at F1.2(30IRE, AGC on)	
Digital Noise Reduction	Automatic	
Video Output Signal	Composite:1Vp-p at 75 Oload	
Lens Mount	3.3-12mm F1.6-360 A.I. lens (default)	
Power Range	DC12V ± 10%	
Sense Up	On (4x) / Off	
H/V Mirror Function	ON / OFF	
Operation Temperature	-10°C - + 50°C	
Camera Dimensions	85 x 70(H) mm	

► Specifications are subjected to change without prior notice.

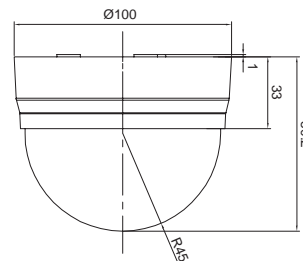
DOME WITH VARIFOCAL LENS



● Key Features

- Compact and Light weight design.
- Integrated 4-9mm Varifocal Direct Drive Lens allows for Easy installation and adjustments.
- Hi-speed F1.6 Iris provides excellent low light performance.
- DSP controls for Back Light Compensation, White Balance, and Gain Control .
- Manual pan/ tilt mechanism.
- Video cable with BNC included.

● Mechanical Dimension



● Technical Specifications

Model	DC-1480P
Scanning Element	2:1 Interlace H15.625 KHz, V: 50Hz
Image Picture Element	1/3" High Sensitivity CCD
Effective Picture Element	752(H) x 582(V)
Resolution	480 Horizontal TV Lines
Minimum Illumination	0.1 Lux
S/N Ratio	48dB (AGC OFF)
3" Bubble	Tint Colored: Optical perfect max. 1F loss
Backlight Compensation	On (Central Area) / Off Switch
AGC	On/ Off Switch
Sync System	Internal
Video Output	1.0 Vpp, 75 ohm Unbalanced
White Balance	Automatic White Balance
ATW Range	2700K-9100K
Power Range	DC12V ± 10%
Power Consumption	2.0W (max.) 2.8W (max.)
Operation Temperature	-5°C to ~ 45°C, Less than 80% R.H.
Overall Camera Dimensions	Height 80mm (3.15") Diameter 100mm (3.94")
Weights	180g
Focal Length	4-9 mm Varifocal Direct Drive lens; W: F1.6~360 T: F2.4 ~ 360
Field-of view	Horizontal: 71.0° ~ 31.6° / vertical: 51.8° ~ 23.6°

► Specifications subject to change without prior notice.

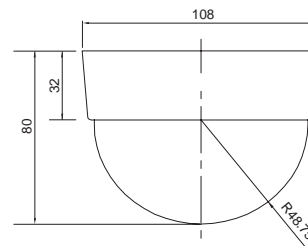
DOME WITH VARIFOCAL LENS



● Key Features

- Compact & Light Weight
- Suitable for ceiling mount
- Integrated Varifocal Lens 3~9mm
- DSP controls for BLC, white balance, and gain control.

● Mechanical Dimension



● Technical Specifications

Model	DC-8635SP (Sharp CCD)	DC-8835SP	DC-8854SH
Image Sensor	1/3" Color CCD		
Effective Pixels	PAL: 500(H) x 582(V) NTSC: 510(H) x 492(V)	PAL: 752(H) x 582(V) NTSC: 771(H) x 492(V)	PAL: 752(H) x 582(V) NTSC: 771(H) x 492(V)
Scanning Element	2:1 Interlace V: 50Hz, 15.625KHz 2:1 Interlace V: 60Hz, 15.750KHz		
Video Output	1 Vp-p, 75 ohms unbalanced		
Lens Mount	Varifocal 3 ~ 9mm Lens		
Resolution	420 TVL	480 TVL	540 TVL
Minimum Illumination	0.1 Lux F1.4		
White Balance	Auto: 2500°K - 9500°K		
Gamma Correction	0.45		
S/N Ratio	More Than 48dB		
Shutter Control	AES		
Shutter Speed	1/50(60)~1/100,000 sec.		
Gain Control	Auto		
BLC	Center area		
Operating Temperature	-5°C - +45°C		
Humidity	Less Than 80% RH		
Mechanical Dimension	H: 84.9mm x 106.6mmØ		
Power Supply	DC12V±10% tolerance		
Power Consumption	2.0W		
Weight	200g.		

► Specifications are subjected to change without prior notice.

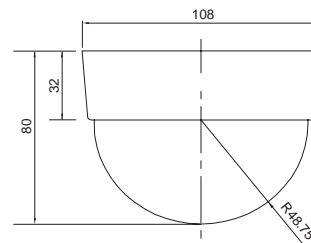
DOME WITH FIXED LENS



● Key Features

- Ultra compact & Light weight
- High Sensitivity
- With wide choice of 1/3" CCDs: Panasonic, SONY and Sharp
- DSP controls for Back Light Compensation, White Balance, and Gain Control .
- No color rolling, stable picture quality

● Mechanical Dimension



● Technical Specifications

Model	DC-866SP	DC-868SP	DC-880SH
Image Sensor	1/3" Color SHARP CCD	1/3" Color CCD	1/3" Color SONY CCD
Effective Pixels	PAL: 500(H) x 582(V) NTSC: 510(H) x 492(V)	PAL: 752(H) x 582(V) NTSC: 771(H) x 492(V)	
Scanning System	2:1 Interlace V: 50Hz, 15.625KHz 2:1 Interlace V: 60 Hz, 15.750KHz		
Synchronization	Internal		
Video Output	1Vp-p, 75 ohms unbalanced		
Lens Mount	Board Lens 3.6mm (standard), 2.5mm, 4.0mm, 6.0mm, 8.0mm, 12mm (optional)		
Resolution	420 TV Lines	480 TV Lines	540 TV Lines
Gamma Correction	0.45		
Minimum Illumination	1.0 Lux	1.5 Lux	1.5 Lux
S/N Ratio	More Than 48 dB		
Shutter Control	AES: 1/50 (60) – 1/100,000sec.		
Backlight Compensation	Automatic, center focus		
Gain Control	Average AGC		
White Balance	- n/a-	Auto: 2500K-9500K	
Power Requirement	DC12V ± 10% tolerance		
Dimensions	H: 84.9mm x Ø106.6 mm		
Weight	200g		

► Specifications are subjected to change without prior notice.

MINIATURE WIDE ANGLE CAMERA

1/4" Color 420TVL / 480TVL 80° / 130° / 185° Miniature Wide Angle Camera



Key Features

- 420TV Lines / 480 TV Lines resolution, providing fine, crisp and vivid high-resolution image
- Outstanding artwork & mechanism design, suitable for all installation environments
- Multi-purpose usage
- Multi-dimensional adjustment
- IP66 rated
- Selectable lenses (80°, 130°, 185°) providing a wide range selection for different viewing applications
- Advanced wide range Auto Tracing White Balance (ATW), automatically adjusts the white balance according to the color temperature in the environment
- Smart digital control Auto Back Light Compensation (BLC)
- Simple & quick combination providing user-friendly installation & maintenance
- Special design distortion-free acrylic dome cover
- Mirror function requested at option

Technical Specifications

Model No.	CBM-1080 CBM-1130 CBM-1185	CBH-1080 CBM-1130 CBM-1185
Image device	1/4" interline transfer Super HAD CCD	
Effective Pixels	510(H) x 492(V) NTSC 500(H) x 582(V) PAL	752(H) x 582(V) NTSC 768(H) x 494(V) PAL
Scanning system	525 Lines, 2:1 interlace NTSC 625 Lines, 2:1 Interlace PAL	
Sync system	Internal Lock	
Horizontal resolution	420 TV Lines	480 TV Lines
AGC	Auto Gain 0-36 dB	
S / N ratio	Better than 50dB	
Electronic shutter control	NTSC: 1/60 ~ 1/100,000 sec PAL: 1/50 ~ 1/100,000 sec	
White balance control	ATW (2500-9500)	
Gamma	0.45	
Minimum Illumination	2 Lux at F2.2 (30 IRE)	
Video output signal	Composite: 1 V p-p at 75ohm load	
Lens mount	CBM-1080 / CBH-1080: 80° (diagonal) Fixed Board Lens default at F2.2 CBM-1130 / CBH-1130: 130° (diagonal) Fixed Board Lens default at F2.2 CBM-1185 / CBM-1185: 185° (diagonal) Fixed Board Lens default at F2.2	
Operating temperature	-10°C to 50°C	
Power source	DC 12V	
Power consumption	under 50mA	
Dimensions	B: 40 x H:40 x T: 35 mm / 165g	
Weight	165g	

► Specifications are subjected to change without prior notice.

CAMERA MODULES WITH FIXED OR PINHOLE LENS

Key Features



Model	MX-30	MX-36	CX-42	CX-56
Video Image	B/W		Color	
CCD Sensor	1/3" LG	1/3" Sony	1/3" Panasonic	1/3" Sony
Effective Pixels	EIA: 510(H) x 492(V) CCIR: 500(H) x 582(V)	EIA: 768(H) x 494(V) CCIR: 752(H) x 582(V)	NTSC: 510(H) x 492(V) PAL: 500(H) x 582(V)	NTSC: 768(H) x 494(V) PAL: 752(H) x 582(V)
Sync. System	Internal			
Video Output	1 Vp-p, 75 ohms			
Minimum Illumination	0.05 Lux	0.1 Lux	0.1 Lux	0.1 Lux
Resolution	400 TVL	600 TVL	420 TVL	540 TVL
S/N Ratio	More than 48dB (AGC Off)			
Gamma Correction	0.45			
Gain Control	Auto			
White balance	-n/a-	Auto: 2500°K ~ 9500°K		
Backlight Compensation	Auto, center area			
Electronic Shutter	Auto 1/60 (50) ~ 1/100,000 sec			
Lens (F2.0)	Pinhole Lens: 3.7mm flat or Corn type Standard Board lens: 3.6mm, 2.9mm, 4mm, 6mm, 8mm, 12mm			
Power Supply	DC12 V ± 10%			
Power Consumption	110 mA		110 mA	130 mA
Dimension	32mm(H) x 32mm(W)	42mm(H) x 42mm(H)	32mm(H) x 32mm(W)	42mm(H) x 42mm(W)
Operating Temperature	-10°C to +45°C			
Storage Temperature	-30°C to +60°C			
Weight	17 g.			

COLOR CAMERA MODULES WITH VARIFOCAL LENS

Key Features



Model	SSVC-380	SSVC-580
Video Image	COLOR	
CCD Sensor	1/3" Sony	1/3" Sony
Effective Pixels	NTSC: 510(H) x 492(V) PAL: 500(H) x 582(V)	NTSC: 768(H) x 494(V) PAL: 752(H) x 582(V)
Sync. System	Internal	
Video Output	1 Vp-p, 75 ohms	
Minimum Illumination	0.1 Lux	0.1 Lux
Resolution	420 TVL	540 TVL
S/N Ratio	More than 48dB (AGC Off)	
Gamma Correction	0.45	
Gain Control	Auto	
White balance	Auto: 2500°K ~ 9500°K	
Backlight Compensation	Auto, center area	
Electronic Shutter	Auto 1/60(50) ~ 1/100,000 sec	
Lens	DC Type Varifocal Lens: 3.5 ~ 8.5mm	
Power Supply	DC12V or AC24 ± 10%	
Power Consumption	130mA	
Dimension	42mm(H) x 42mm(w)	
Operating Temperature	-10°C to +45°C	
Storage Temperature	-30°C to +60°C	
Weight	85 g.	

SMOKE DETECTOR CAMERA

Key Features



Model	SMC-4420	SMC-4380
CCD Image	1/3" Sony CCD	1/4" Sony CCD
Picture Elements	EIA: 512 x 492 , CCIR: 512 x 582	NTSC: 512 x 492 , PAL: 512 x 582
H. Sync Frequency	EIA: 15.734 KHz , CCIR: 15.625 KHz	NTSC: 15.734 KHz , PAL: 15.625 KHz
V. Sync. Frequency	EIA: 59.94Hz , CCIR: 50 Hz	NTSC: 59.94 Hz , PAL: 50 Hz
V. Synchronization	Internal	
Horizontal Resolution (TV lines)	420	380
Minimum Illumination	0.05 Lux	1 Lux
Back Light Compensation	Auto	
Electronic Shutter	Auto, Range: 1/50 (1/60) ~ 1/100,000 sec.	
Auto Gain Control	Auto	
Lens (F2.0)	3.7mm F3.5 pin hole for bottom side	
Gamma Correction	0.45	
S/N Ratio	More than 48 dB	
Video Output	1 Vp-p, 75 Ohms	
Power Supply	110 mA	180 mA
Power Consumption	12VDC	
Storage Temperature	-30°C ~ +60°C	
Operating Temperature	-10°C ~ +45°C	
Dimension	125mm x 52mm(H)	
Weight (Gross)	161 g	

CAMERA LENS



● Technical Specifications

Model	FLVD0358-R	FLVD0359-R	FLVD2812-R	FLVD0660-R
Focal Length (mm)	3.5 ~ 8	3.5 ~ 9	2.8 ~ 12	6 ~ 60
Aperture (D/f)	1/1.4	1/1.2	1/1.6	1/1.6
Mount	CS	CS	CS	CS
Format (inch)	1/3"	1/3"	1/3"	1/3"
Horizontal Field	80° ~ 36°	80° ~ 30°	92° ~ 24°	44° ~ 4.4°
Operation	Focus	Manual		
	Zoom	Manual		
	Iris	AUTO (DC)		
Dimension (mm)	33 x 47 x 45	29 x 43 x 42.9	37.5 x 46 x 61.5	37.5 x 46 x 70
Weight (g)	95	66	120	130
M.O.D. (m)	0.2	0.3	0.2	0.3

► Specifications are subjected to change without prior notice.

SERVICE KIT MONITOR



● Technical Specifications

Model	CLSM-411
Display Size	4"
Active Area	82.1(W) x 61.8(H) mm
Resolution	480 x 234 (High)
Contrast Ratio	150:1
Brightness	250cd/m2
Video System	NTSC/PAL
Power Source	DC12V 500mA
Video Input	1V p-p 75 ohm, RCA x 2
Audio Output	1 V p-p 10K ohm x 1
Audio Input	5W Max.
Power Consumption	-20°C ~ 80°C
Storage Temperature	0°C ~ 60°C
Dimension	139 x 115 x 36 mm
Accessory Included	Rechargeable Battery, Carrying Case, RCA to BNC Plug

► Specifications are subjected to change without prior notice.



● PM-250IU

Function	Features
<p>Video Tester CCTV video field monitor with 2.5" TFT LCD</p> <p>PTZ Controller With Pelco-D, Pelco-P, Samsung etc. protocols selectable via OSD menu, strong compatibility</p> <ul style="list-style-type: none"> ■ With most of the PTZ cameras. ■ With 2400bps, 4800bps, 9600bps, 19200bps communication baud rate selectable via OSD menu ■ Camera address selectable from 1-255 ■ Save and call preset 1-255 ■ Pan and tilt speed selectable from 0-64 speed grade ■ Can display the PTZ camera OSD menu and set all the PTZ functions. ■ With up, down, left, right direction key and Iris open close, Focus far, near, Zoom tele wide keys for the PTZ control ■ Network Cable Test ■ Can test the network cable status 	<ul style="list-style-type: none"> ■ Battery-powered or DC9V/2A power input selectable ■ Pocket size, easy and convenient operation ■ Beeper on/off choice ■ With sleep function, can set the unit switch off automatically after a period of time without operation ideal for save electricity. ■ OSD menu On/off selectable to avoid overlap with the camera titles ■ PAL/NTSC auto adaptable
<p>Interface</p> <ul style="list-style-type: none"> ■ RS485 interface, connect 2 wire RS485 data cable, need no screw drivers. ■ Video in, Video out BNC connector ■ RS232 interface ■ DC9V 2A Power input interface ■ RJ45 interface 	<p>Package Includes</p> <ul style="list-style-type: none"> ■ Battery Charger ■ 4pcs chargeable batteries ■ 1 RJ45 test terminal ■ BNC to BNC Cable ■ Necklace Accessory
<p>Dimension</p> <ul style="list-style-type: none"> ■ 156 x 93 x 51mm 350g ■ 245 x 195 x 83mm 850g 	<p>► Specifications are subjected to change without prior notice.</p>

LENS ADJUSTABLE TFT COLOR LCD



Key Features

- With 3.5" ± TFT color LCD monitor
- Built in 1/3" ± color CCD camera
- A device with turning wheel to adjust the lens
- Built in five lens (4, 6, 8, 12 & 16 mm) for selection with ease operation

Technical Specifications

Video	Model	CLSM-3501
Out	Pick Up Device	1/3" Color CCD
	Number of Pixel	NTSC: 512(H) x 492(V) PAL: 512(H) x 582(V)
	Resolution	420 TV Lines
	Min. Illumination	0.5 Lux / F2.0
	S/N Ratio	More than 48 dB (AGC Off)
	Electronic Shutter	1/60 (1/50) to 1/100,000 sec
	Lens	Built in 4, 8, 12, 16 mm
	Consumption of power source(with screen)	DC12V ± 10%, 260 mA
Video In	Display Size	3.5" (Diagonal)
	Pixel Pitch	0.150 mm(W) x 0.216(V) mm(H)
	Effective Display Region	72mm(W) x 50.544 mm(H)
	Resolution	480(H) x 234(V)
	The structure of Pixel	R.G.B Delta
	Input Signal (internal CCD video) (external CCD video)	1.0 Vp-p composite, 75Ω
	Output Signal Internal CCD video	1.0 Vp-p composite, 75Ω
	The Connector of Input Image	BNC Connector
	Image System	NTSC/PAL
	Power Source	No. 3 Alkaline Battery 8 pcs or DC12V input
	Consumption of Power Source	DC12V, 170Ma
	Size	155mm x 50.544mm
	Weight	360 g
	Accessories	Leather Bag/ Belt / Video Connector / BNC connector / three port power cable

► Specifications are subjected to change without prior notice.

17" / 19" TFT LCD MONITOR



Key Features

- High Resolution CCTV Monitor: 1280 x 1024
- Multi Video Standard (NTSC / PAL / AUTO)
- Multi Language Support
- Fast Response Time: 12ms
- More than brightness 300 cd/m²
- High contrast at 500: 1

Technical Specifications

Model	TFTM-1702H	TFTM-1902H
LCD Display	337.9(H) x 270.3(V) mm	376.22(H) x 301.056(V) mm
Viewing Angle	140 / 130 (Typ.)	140 / (Typ.)
Dot Distance	0.264(H) x 0.264(V) mm	0.294(H) x 0.294(V) mm
Light	4 CCFL	
Resolution	1280 x 1024 (SXGA)	
Horizontal Freq.	30K - 80 kHz	
Vertical Freq.	56 - 75 Hz	
Display Color	16.7M	16.2M
Signals	ANALOG RGB SIGNALS	
Signal Input	15-PIN D-SUB, AUDIO INPUT x 1	
Brightness	300 (cd/m ²)	
Contrast Ratio	500:1	
Response Time	12 ms	
Consumption	30W (MAX), 3W (STAND MODE)	
VESA	VESA DDC 2B	
Panel Control	5 KEYPAD, POWER, MENU/ENTER, UP/RIGHT DOWN/LEFT, EXIT	
OSD Control	AUTO CONFIG, BRIGHTNESS, CONTRAST COLOR-TEMP, POSITION, IMAGE QUALITY, MENU	
Operation Temperature	OPERATION: 0 ~ 35°C STORAGE: -20 ~ 60°C	
Horn	2W x 2 SPEAKER WITH AMPLIFIER	
Save Power	VESA DPMS	
Power Input	110-240VAC(60/50Hz)	
Dimension	400(W)*385(H)*160(D)mm	430(W)*425(H)*160(D) mm
Net Weight (N.W/G.W)	5.15 Kg / 7 Kg	5.35 Kg / 7 Kg
Option Connections	15 pin D-Sub, Video-in, S-Video, DVI-I	
TV function (optional)	NTSC, 125 channel, IR remote control, MTS	

► Specifications are subjected to change without prior notice.

CCTV COLOR MONITOR



VMC-21A



VMC-17A



VMC-15A



VMC-14A

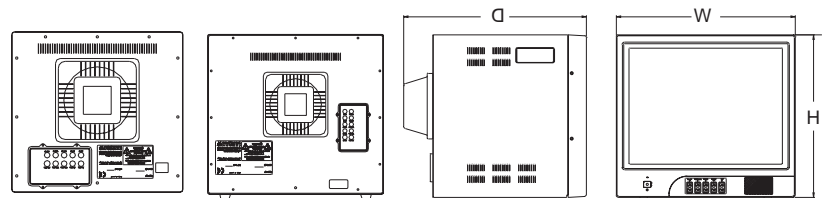


VCM-1014

Key Features

- More than 500TV lines resolution
- Digital front panel controls
- Heavy-duty metal cabinet
- Video looping and Y/C input
- With A / B two channels switchable
- Perfect for use with color quad and multiplexer
- With full range 96-256V AC power input

Mechanical Dimension



Technical Specifications

Model	VCM-1014	VMC-14A	VMC-15A	VMC-17A	VMC-21A
System	NTSC / PAL auto detect				
Picture Tube Dimension	14"	14"	15"	17"	21"
Front Control	Power ON / OFF: Rocker switch Color / Contrast / Brightness / TINT: tact switch Volume: tact switch				
Resolution	420 TV	500 TV lines	700 TV lines	700 TV lines	500 TVlines
Input Signal	0.5-2.0 Vp-p	1 Vp-p, composite video, S-video			
Input Impedance	Composite Video, negative Sync. Y: 1.0Vp-p, C: 0.7Vp-p	75 ohm or higher (Auto Termination)			
Bandwidth	6MHz (-3dB)				
Video Gain	30 dB				
Linearity	Horizontal: 10% (Max), Vertical 10% (Max)				
Operating System	NTSC: 525 lines / Frame PAL: 625 lines / Frane				
Video (In / Out)	BNC Connector: Input x 2 / Output x 2 ; S-Video Input x 1 / Output x 1				
Andio (In / Out)	RCA: Input x1 / Output x 1				
Audio Input Signal	10-150m Vp-p	1 Vp-p			
Speaker	1W / 8 ohm				
Input Voltage	96-256 Vac, 50Hz / 60Hz				
Power Consumption	40W	57W	63W	68W	75W
Weight	14kg / 15kg	14kg / 15kg	16kg / 17.55kg	20kg / 22kg	27kg / 29.5kg
Dimension (W x D x H) mm	362 x 376 x 321	362 x 375.5 x 329	362 x 400 x 342	420 x 476 x 422	490 x 500 x 453
Operating Temperature	-10 to 55°C (14 to 122 °F)				
Storage Temperature	-20 to 70°C (-14 to 140 °F)				
Certification	CUL, UL, CE, FDA, FCC				

► Specifications are subjected to change without prior notice.

CCTV B/W MONITOR



VM-2020



VM-1017



VM-1014



VM-2012

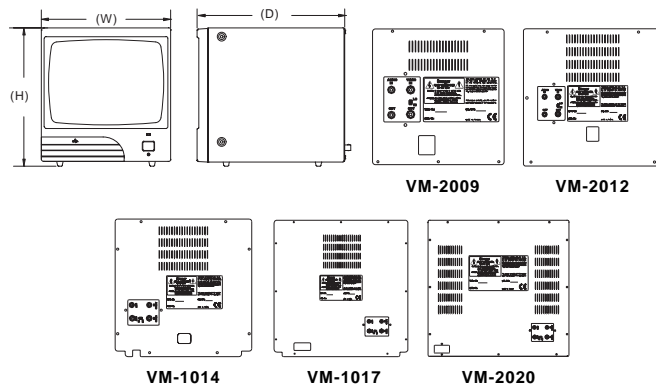


VM-2009

Key Features

- High resolution CCTV monitor
- Steel cabinet with plastic front panel
- Convenient front panel control
- With carrying handle at top
- 75Ω high-impedance termination switch on rear
- For application with CCTV type cameras
- With full range power input 96-256Vac
- With optional audio function

Mechanical Dimension



Technical Specifications

Model	VM-2009	VM-2012	VM-1014	VM-1017	VM-2020
System	EIA or CCIR				
Active Area	9"	12"	14"	17"	20"
Front Control	Ppwer ON / OFF: push button switch H-HOLD / V-HOLD / CONTRAST / BRIGHTNESS: rotary control				
Resolution	1000 TV Lines				
Input Signal	1 Vp-p composite video				
Input Impedance	75 ohm or higher (High / Low Switchable)				
Bandwidth	6MHz (-3dB)				
Video Gain	30 dB				
Linearity	Horizontal: 10% (Max), Vertical 10% (Max)				
Operating System	EIA: Horizontal 15.750, Vertical: 60Hz CCIR: Horizontal 15.625, Vertical: 50Hz				
Video (In / Out)	BNC or F Connector: Input x 1 / Output x 1				
Audio (In / Out)	RCA Jack: Input x 1 / Output x 1 (Optional)				
Audio Input Signal	1 Vp-p				
Speaker	1W / 8 ohm				
Input Voltage	96-256 Vac, 50Hz / 60Hz				
Power Consumption	28W	30W	38W	45W	48W
Weight	6.5kg / 7kg	9kg / 10.5kg	10kg / 11kg	15.5kg / 17kg	19kg / 21kg
Dimension (W x D x H) mm	220 x 252 x 235	310 x 300 x 313	325 x 326.7 x 325	420 x 421 x 426	473 x 361 x 476.5
Operating Temperature	-10 to 55°C (14 to 122 °F)				
Storage Temperature	-20 to 70°C (-14 to 140 °F)				
Certification	CUL, UL, CE, FDA, FCC				

► Specifications are subjected to change without prior notice.

4CH MOBILE DVR WITH WIFI CONNECTIVITY



Key Features

- 4 video inputs and 1 audio input for DVR-M104H; 8 video inputs and 2 audio input for DVR-M108H
- Digital video images stored in a 2.5" hard drive
- Embedded Linux Operations Systems and firmware in Flash Memory
- GPS, GPRS/GSM/CDMA/3G/ WI-FI Interface
- Date, Time, GPS data (coordination, speed)
- Instant Video Retrieval by time, data, and event
- Programmable recording speed, video quality and recording schedule
- Support PTZ Function
- GPIO terminate for external alarm activation
- Watchdog function
- DVR_Earth for Google Map software (option)
- Remote Management Software RMS (option)
- Power Input: DC9-36V, designed for major transport vehicles

Technical Specifications

Model	DVR-M104H , DVR-M108H
Video Standard	PAL or NTSC
Display rate	Up to 30 fps
Storage	2.5" IDE / SATA HDD (DVR-M104H, DVR-M108H)
Recording Rate	Up to 30 fps
Video Compression	MPEG4 / MJPEG
Playback search	By alarm or time segment
Picture Format	NTSC: 720 x 480 ; 320 x 240 PAL: 768 x 576 ; 384 x 288
Recoding Mode	Continuous, Timeplace, Motion or event recording
Video Input	4 or 8
Video Loss Detection	Yes
Video Output	1 VGA
Support PTZ Function	Yes
Event Log	Yes
Alarm Input	4 alarm input for DVR-M104H, 8 alarm input for DVR-M108H
Alarm Output	4 alarm output for DVR-M104H, 8 alarm input for DVR-M108H
Audio Input	1 audio input for DVR-M104H, 2 audio input for DVR-M108H
Network	LAN/GPRS/CDMA /WI-F/3G, all via TCP/IP, support DDNS
WI-FI Support	Wireless 802./11b/11g
RS-232	GPS GPRS/CDMA interface
Timer	Built in Real Time Clock
Archive	USB
User Interface	Menu Driven
Power Source	9V ~ 36VDC Input Power module
Dimension	250 x 151 x 40.8 mm
Storage Temperature	-20°C ~ 75°C
Operating Temperature	0°C ~ 40°C

► Specifications are subjected to change without prior notice.

MOBILE DVR WITH WIFI CONNECTIVITY



Key Features

- 8 video inputs and 2 audio inputs
- Digital video images stored in a 2.5" hard drive
- Compact flash memory served as back up with incident or continuous storage
- Embedded Linux Operation system and firmware in Flash Memory
- DVR on DOM (disk on module) chip for great stability
- GPS, GPRS/GSM/CDMA/3G/ WI-FI Interface
- Date, Time, GPS data (coordination, speed)
- Instant Video Retrieval by time, date and event
- Programmable recording speed , video quality and recording schedule
- GPIO terminals for external alarm activation
- Support PTZ Function
- IrDA controller
- Watchdog function
- DVR_Earth for Google Map software (option)
- Remote Management Software RMS(option)
- Anti-Vibration: 1G ; 5-500Hz
- Random Shock: 8G (Operation) 200G (standby)
- Power Input: DC 9V-36V, designed for major transport vehicles
- Power Output: DC 5V*2 sets

Technical Specifications

Model	DVR-M208H
Video Standard	PAL and NTSC
HDD Format	2.5" IDE HDD
Video Compression	MPEG4 / MJPEG
Picture Format	NTSC: 720x 480; 320 x 240 PAL: 768 x 576; 384 x 288
Video Inputs	8
Video Output	1 output (A / V), 1 output (VGA)
Alarm Input	4 Alarm Input
Alarm Output	4 Alarm Output
Audio Input	2 Audio Input
Network	LAN / GPRS / CDMA/3G, all via TCP/IP; support DDNS
RS232	GPS/ GPRS / CDMA / Wi-Fi Interface
WiFi Support	Wireless 802.11b/11g
Archive	Compact Flash Memory, USB
Timer	Built in Real Time Clock
User Interface	Menu Driven
Display Rate	Up to 30fps
Recording Rate	Up to 60fps
Playback Search	By alarm or time segment
Recording Mode	Continuous, Timelapse, scheduled or event recording
Video Loss Detection	Yes
Event Log	Yes
Support PTZ Function	Yes
Vibration	1G: 5-500Hz
G-Shock	8G (operating) 200G (standby)
Power Output	5V DC Output Power *2 sets
Power Source	9V-36V DC Input Power Module
Dimension	210mm x 168mm x 82mm
Approvals	CE, FCC, E-mark
Storage Temperature	0°C ~ +60°C
Operating Temperature	-5°C ~ +50°C

► Due to the constant upgrade of specification, the specification is, therefore, subjected to change without prior notice.

H.264 MULTI-TASKING NETWORK DVR FOR HIGH DENSITY RECORDING & MANAGEMENT



DVX-9000HC SERIES

● Key Features

Video & Audio Recording

- H.264 Video Compression Standard
- Build-in Channel Switching (QUAD) Function for local CCTV Monitoring
- Support PTZ Speed Domes Control
- Embedded Digital Video Recorder & Remote Video Server
- Friendly Graphic User Interface (GUI)
- User Selectable of Full Screen, 1 / 4 / 6 / 9 / 10 / 16 Split-Screen Display

Alarm Function

- Automatic Alarm Notification
- Snapshot Images Through E-mail or Signal Digital Output When Alarm is Triggered
- Voice Call or Phone Call Alert Notification
- Optional GPIO Alarm Control

Network

- Need Remote Software to Viewing and Playback
- Dynamic IP Support
- Direct Dial Up available and Low-bandwidth Support
- Alarm Triggering / Motion Detection / Continuous Recording / Schedule Recording

Recording & Back Up Function

- SCSI / USB/ IDE Raid and NAS Storage System Support
- Supports External USB / Hard Disk / CDR-W Back Up
- Query Recorded Data By Date, Time, Triggered Events Provides Play / Stop / Pause / Forward & Backward Search Functions

● Key Characteristics

- D1 (704 x 576) Hardware Compression H.264 Encoding
- Real Time Live Surveillance
- Real Time Audio and Video Recording
- Full Screen, 1 / 4 / 6 / 9 / 10 / 16 Split-Screen Display
- Agility Motion Detection Support
- Support TCP/IP, PPPoE and DHCP
- Support NAS or USB external storage
- SATA or IDE interface HDD, CD-RW or DVD-RW back up support
- Remote viewing and remote playback via software
- Operation systems is Windows 2000 / XP / 2003
- Hardware Watchdog support for automatic failure recovery

● Technical Specifications

Model	DVX-9004HC	DVX-9008HC	DVX-9016HC
Video Input	4	8	16
Audio Input	4	8	16
Sensor Input / Relay Output	4 in / 4 out or 16in / 16 out		
Compression Standard	H.264		
VGA Output	24 Bit True Color		
Maximum Live Display Frame Rate	120 fps	240 fps	480 fps
Maximum Video Recording Frame Rate (320x240)	120 fps	240 fps	480 fps
Communication Protocols	TCP/IP, DHCP, PPPoE		
Back Up Function	Internal IDE or SATA Hard Disk or SCSI /USB Interface HDD / CDR-W / DVD-RW		
Language	English / Chinese / France/ Germany / Spain		
Redundant Power Supply	100V ~ 240VAC Auto Switch		
Size	51cm(L) x 45cm (W) x 38cm (H)		

▶ Specifications are subjected to change without prior notice.

H.264 INTELLIGENCE DVR CARD



CP-3004



CP-3008



CP-3016



Key Features

- Featuring most advanced arithmetic H.264 Hardware video compression
- Real Time live surveillance up to 64 channels video, audio recording
- Build in Hybrid function can be connected IP cameras provided by license optionally
- Dual monitor display
- Smart motion detection support
- Remote viewing and remote instant playback via software or IE
- Support TCP/IP, PPPoE and DHCP via router
- Embedded smart guard system to detect events notification actions
- Intelligent video management like object missing, foreign object and counting application
- Normal recording / motion recording/event recording
- SATA or IDE interface HDD, CD-RW or DVD-RW back up
- Support NAS or USB external storage
- Plug & Play, Windows operation system installation required (window 2000/XP)
- Friendly Graphic User Interface (GUI)
- Optional GPIO alarm control, voice call or phone call alert notification
- Snapshot Images Through E-mail when Alarm is Triggered
- Support PTZ Speed Domes Control
- Support 3GPP PDA/Mobile surveillance
- MegaPixel IP camera support (option)

Technical Specifications

Model	CP-3004	CP-3008	CP-3016
Video Input	4	8	16
Audio Input	4	8	16
Sensor Input / Relay Output	4 in / 4 out or 16 in / 16 out		
Compression Standard	H.264		
VGA Output	24 Bit True Color		
Display (NTSC / PAL)	120 fps, 100 fps	240 fps, 200 fps	480 fps, 400 fps
Maximum Video Recording Frame Rate (CIF, NTSC / PAL)	120 fps, 100 fps	240 fps, 200 fps	480 fps, 400 fps
Communication Protocols	TCP/IP, PPPoE, DHCP via router		
Back Up Function	Internal IDE or SATA Hard Disk or SCSI / USB Interface HDD / CDR-W / DVD-RW		
Language	English / Traditional Chinese / France / Germany / Russian / Spain		
Redundant Power Supply	100V ~ 240VAC Full Range		
For Hybrid integration, please refer to license key pro of Maxi Watch Hybrid Software upon order request			

► Specifications are subjected to change without prior notice.

User Interface



Live



Remote Software



I.E

MULTI-TASKING LINUX-BASED NETWORK DVR FOR HIGH DENSITY RECORDING MANAGEMENT



DVX-9100 SERIES

Key Features

Video & Audio Recording

- Plug & Play, No OS Installation Required
- Build-in Channel Switching (QUAD) Function for local CCTV Monitoring
- Support Most PTZ Speed Domes
- Embedded Digital Video Recorder & Remote Video Server
- Friendly Graphic User Interface (GUI)
- User Selectable of Full Screen, 1 / 4 / 6 / 7 / 8 / 9 / 10 / 13 / 16 Split-Screen Display

Alarm Function

- Automatic Pre-Alarm Notification
- Snapshot Images Through E-mail or FTP Server When Alarm is Triggered
- Voice Call Alert Notification
- Optional GPIO Alarm Control (Maximum Input 16, Maximum Output 16)

Network

- Browser Based, No Remote Viewing Software Required
- Access Prohibition For Pre-defined hosts Through IP Network
- Dynamic IP Support for Internet Access
- Direct Dial Up available and Low-bandwidth Support
- Alarm Triggering / Motion Detection / Continuous Recording / Schedule Recording

Technical Specifications

Model	DVX-9104	DVX-9108 DVX-9108E (PCI-E)	DVX-9116 DVX-9116E (PCI-E)
Video Input	4	8	16
Audio Input	1	1	1
Sensor Input / Relay Output (Option)	4 in / 4 Out	8 in / 8 Out	16 in / 16 Out
Compression Standard		H.263, MJPEG, JPEG, MPEG4	
VGA Output		24 Bit True Color	
Maximum Live Display Frame Rate	120 fps	240 fps	480 fps
Maximum Video Recording Frame Rate (640 x 480)	120 fps	160 fps	160 fps
Maximum Video Recording Frame Rate (320 x 240)	120 fps	240 fps	240 fps
Browser Compatibility		WIN 98 / ME / 2000 / XP Running MS Internet Explorer 6.0 or better	
Communication Protocols		TCP/IP, DHCP, NTP, HTTP, FTP	
Back Up Function		Internal IDE or SATA Hard Disk or SCSI / USB Interface HDD / CDR-W / DVD-RW	
Language		English	
Redundant Power Supply		100V ~ 240VAC Auto Switch	
Size		51cm(L) x 45cm(W) x 38cm(H)	

► Specifications are subjected to change without prior notice.

Recording & Back Up Function

- Thumbnail Browsing Support
- SCSI / USB / IDE Raid and NAS Storage System Support
- Supports External USB / Hard Disk / CDR-W / DVD Back Up
- Hardware Watch Dog Timer For Automatic Recovery
- Firmware Upgraded from USB Flash Drive
- Query Recorded Data By Date, Time, Triggered Events Provides Play / Stop / Pause / Forward & Backward Search Functions

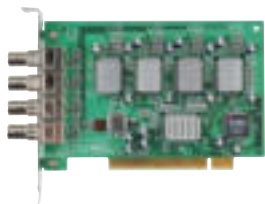
Customization

- Supports HTML File Upload For Home Page Customization
- Provides URL Syntax For Graphic User Interface and Home Web Page Customization
- Support FTP Server Upload For Customization
- Support Back Up Configurable File
- Support POS For One License Free Integration

Key Characteristics

- Real Time Live Surveillance For Each Camera, Up to 16 Cameras in One System
- Full Screen, 1 / 4 / 6 / 7 / 8 / 9 / 10 / 13 / 16 Split-Screen Display
- Adjustable Recording Frame Rate For Each Camera
- Simultaneous Recording, Play Back, Back Up, Browse Capability
- Supports SCSI / USB / IDE / SATA / RAID and NAS Storage System
- Multiple Video Compression Engine: H.263, JPEG, M-JPEG, MPEG4

NETWORK INTELLIGENCE SOLUTIONS DVR ON CHIP



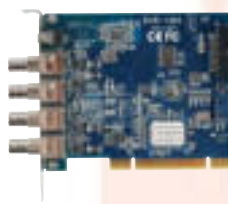
VP-40 PCI

Video inputs: 4 BNC connectors
Max videos: 16 channels
Frame rates: 120 fps



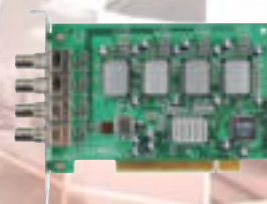
VP-42 PCI-E

Video inputs: 8 BNC connectors
Max videos: 16 channels
Frame rates: 240 fps



VP-14 Specification

Video inputs: 4 BNC connectors
Max videos: 16 channels
Frame rates: 40 fps



VP-18 Specification

Video inputs: 8 BNC connectors
Max videos: 16 channels
Frame rates: 80 fps

Key Features

VP-1x series

Video & audio live surveillance

- Network DVR Firmware in a DOM (Disk On Module)
- Simple and smart operation with IR remote control.
- Adjustable recording quality for each camera.
- Two-way audio transmission.
- 1 / 4 / 6 / 7 / 8 / 9 / 10 / 13 / 16 split-screen display.
- Control well known brand PTZ Cameras.
- Different PTZ devices can work on same serial bus.
- System log and Operation log support.
- Record / display / playback simultaneously.
- Local playback of recorded video on VGA or TV monitor .
- Remote live monitoring and playback from PC browser.
- High video quality and low data rate.
- Multiple video compression engines: MPEG4, H.263, JPEG, M-JPEG

Recording & Playback

- Water mark to prevent fraud image modification
- Adjustable recording rates and resolution for each camera
- Motion detection / Alarm trigger / Cyclic / Schedule / Weight recording
- Pre-motion or pre-alarm and post-motion or post-alarm recording
- Adjustable recording frame rates when motion or alarm was triggered
- Brightness and color adjustment during playback
- Digital Zoom-in during playback
- Thumbnail browsing support

- Bookmark function support
- Searching by time, day, motion, events or alarm log.
- SCSI/USB/IDE RAID and NAS storage system support

Alarm function

- System audio alarm warns when alarm is triggered
- System automatically displays corresponding enlarged image when alarm is triggered
- Snapshot images through E-mail or FTP server when alarm is triggered.
- Voice call alert notification
- Optional GPI/O for alarm control

Network

- Browser-based, no remote viewing software needed.
- Access prohibition for pre-defined hosts through IP network
- Dynamic IP support for Internet access
- Direct Dial-up available and Low-bandwidth support

Easy to use

- Plug and recording, non-Windows embedded Linux system
- Easy configuration via local keyboard, IR Control, Home Page or Mouse
- Standard web browser as the client application

Customization

- Supports HTML file upload for home page customization
- Supports FTP Server upload for customization
- Support backup configuration file
- Support POS /ATM integration

Key Features

Model	VP-14	VP-18	VP-40	VP-42
Channels / Card	4	8	4	8
Display FPS / Card	10 fps	40 fps	120 fps	240 fps
Max. Rec. FPS / 16 Channel (320 x 240)	40 fps	85 fps	240 fps	240 fps
Max. Rec. FPS / 16 Channel (640 x 480)	40 fps	45 fps	160 fps	160 fps
Audio In / Card	4	8	4	8
Alarm In / Card (Option)	4	8	4	8
Control Out/Card (Option)	4	8	4	8
Compression Standard	MPEG4 / JPEG / MJPEG / H.263			
Minimum System Requirement	Pentium IV2.0 GHz CPU or better, 256DRAM one IDE slot for DOM chip, AGP VGA card			
Browser Compatibility	Win98 / 200 / XP running MS internet Explorer 6.0 or later			
Communication Protocol	Support TCP/IP, DHCP, NTP, HTTP, FTP			
Backup Function	IDE or USB Interface HDD, CD-RW, DVD-RW			
Language	English			

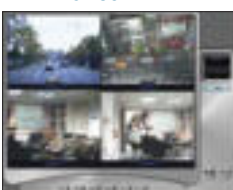
* Optionally select VP-DOM as a tie-in with the card of VP-1x series and VP-4x.

* Optionally select IRDA controller for VP-1x series and VP-4x.

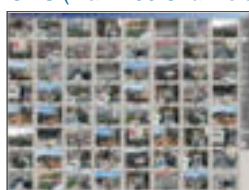
Live Surveillance:



L.E. Browser:



CMS (Max. 256 Channels):



HYBRID MPEG4 EVOLUTION DVR



EDVR-1040



EDVR-1090



EDVR-1160

Key Features

- DVD Quality, advanced profile MPEG4
- True Triplex (Live, Recording, Playback, Archiving, Remote Viewing): Pentaplex Operations featuring "True Triplex" operation in the local operation and remote browser
- External Archiving via eSata
- Two way audio with featuring net-stream recording and voice command
- SDK: The Evolution DVR can be fully integrated into other video management systems using the robust FINE video SDK
- DVD slot drive with SmartBurn one-touch technology
- Advanced dual "SMART" streaming technologies
- RAID 1 support and smart hard drive monitoring
- Dynamic frame rate settings and advanced scheduling options
- HYBRID functionality with advanced transcoding capabilities
- Main output: 1 BNC , 1 VGA spot output: 1 BNC
- Built in real time clock and auto time synchronization with global NTP server through Internet
- Ethernet Interface for remote network viewing and controlling, 10/100/1000 Ethernet x 1
- Jog / Shuttle dial for picture by picture or fast. slow viewing
- Real-Time live display for all cameras
- Watermark capabilities restores previous settings in the event of power outage
- 2 USB 2.0 Interface for mouse and archiving
- Protected images: the end user can configure sections of recorded images to be protected from overwrite, and remove protection

Technical Specifications

Model	EDVR-1040	EDVR-1090	EDVR-1160
Format	NTSC/EIA or PAL /CCIR		
Inputs	4/9/16 camera Inputs (BNC) 1 Vp-p / 75 ohm		
Outputs	Main Monitor: 1 BNC composite video output, 1Vp-p/75 ohm Call Monitor: 1 BNC composite video output, 1Vp-p/75 ohm		
Compression	MPEG 4 Advanced Level		
Recording Resolution	D1: 720 x 480 (NTSC) or 720 x 576 (PAL) 2 CIF: 720 x 240 (NTSC) or 720 x 288 (PAL) CIF: 360 x 240 (NTSC) or 360 x 288 (PAL)		
Display	Full, 4, 9, 16, PIP (live only) and 2 x 2 Zoom for live and playback		
Live Display Resolution	720 x 480 (NTSC) or 720 x 576 (PAL) Real Time Display		
Video Pause	Yes		
Video Loss Detection	Yes		
Audio Inputs	4 mono input RCA		
Audio Output	1 mono (SPEAKER) output		
USB 2.0	Provide USB 2.0 for external USB Flash Memory		
Alarm inputs	4/9/16 alarm inputs		
Alarm Outputs	Alarm output x2		
DVD	Provide DVD slot drive to accept any media format including CD-R or RW+/- or DVD +/- without formatting		
Hard Disk Storage	Built-in 2 internal 3.5" SATA Hard Disk		
External Storage	External SATA connector		
Recording Rate	Up to 480/400 (CIF) frames per second for NTSC/PAL		
Recording Mode	Up to Real Time recording performance for 4CH Normal, Schedule Rec. Event recording (Motion, Video Loss, Alarm)		
Playback Rate	Up to 480/400 (CIF) frames per second for NTSC/PAL		
Playback Search	By Date / Time or Event (Motion, Video Loss, Alarm)		
Playback	Play, Pause, stop, fast forward (x2, x4, x8, x16, x32, step forward, fast backward (x2, x4, x8, x16, x32) step backward		
Motion Detection	With multiple configurable detection areas PAL (22 x 18) NTSC (22 x 15) & different sensitivity for each camera		
Event Log	Yes		
User Interface	User friendly OSD menu driven		
Setup	On screen display setup		
Timer	Build in RTC & Auto Time Sync with global NTP server through Internet		
Watch Dog	Yes		
Title	12 character title generator for each camera		
VGA output	HD-D815 Male connector (SVGA, upon 1024 x 768 pixel resolution 3D)		
USB	Yes, 2 x USB 2.0 interface device, 1 for external storage and the other for mouse		
Ethernet	10/100/1000 Ethernet port RJ-45 x 2, port 1 for Ethernet connection, port 2 reserve for network storage		
RS-232	DB-9		
RS-485	For PTZ and / or control keyboard		
User Input Device	Front panel keypad, shuttle/jog, Remote control, control keyboard, USB mouse		
Power Source	AC100 ~ 240V		
Power Consumption	65W		
Operation Temperature	0°C ~ 40°C		
Overall Camera Dimensions	430W x 416.6D x 79.6H mm		

► Specifications are subjected to change without prior notice.

STAND ALONE 4 CHANNEL DVR



HDV-04LCS



HDV-M04LC



Key Features

- MPEG-4 or MJPEG video Compression
- 4 Channel cost effective network DVR
- Resolution: Real-time 720 x 480 (NTSC) / 720 x 576 (PAL)
- Graphic User Interface (GUI) on HDV-M04LC, OSD on HDV-04LC
- Mouse support on HDV-M04LC, IR Remote Controller for HDV-M04LC and HDV-04LC
- USB Back Up / Firmware Update on HDV-M04LC

Technical Specifications

Model		HDV-04LCS	HDV-M04LC
Resolution	Live	720 x 480 (NTSC) / 720 x 576 (PAL)	720 x 480 (NTSC) / 720 x 576 (PAL)
	Record	640 x 224 (NTSC) / 640 x 272 (PAL)	720 x 240 (NTSC) / 720 x 288 (PAL)
Video Input		BNC x 4	BNC x 4
Audio Input			RCA x 1
Audio Output			RCA x 1
Video Output			BNC x 1
Mode		Simplex	Triplex
Display Frame		NTSC: 4 x 30 frame/sec , PAL: 4 x 25 frame/sec	NTSC: 4 x 30 frame/sec PAL: 4 x 25 frame/sec
Recording Frame Rate (MUX)		NTSC: Max. 30 / 4 PPS , PAL: Max. 25 / 4 PPS	NTSC: Max. 30 / 4 PPS , PAL: Max. 25 / 4 PPS
Recording Frame Rate (Quad)		NTSC: Max. 120 / 4 PPS , PAL: Max. 100 / 4 PPS	NTSC: Max. 120 / 4 PPS , PAL: Max. 100 / 4 PPS
Storage Media		1 SATA Hard Disk	1 SATA Hard Disk
Image Format		MJPEG	MPEG4
Compress Rate		Low: 8 K bytes , Medium: 10K bytes	Low: 2K bytes , Medium: 4.2K bytes High: 6.2K bytes , Best: 8K bytes
Recording Mode		Manual / Alarm / Schedule	
Playback Speed		Fast Forward x4 x8 x16 Fast Reverse x 6	Fast Forward x2 x8 x16 x32 x64 Fast Reverse x32 Frame by Frame Playback Slow Motion x1/2 x1/4
On Screen Display & Setup		Time / Date / Setup MenuTitle / Time / Date / Setup Menu	
Password Control		Yes	
Serial Port		Not Available	Not Available
Event List		Max. 63 records/H.D.D	3000 Events
Motion Detection		Yes	Yes
Network Interface		Not Available	Yes
Back Up		PC-LINK	USB
VGA Output		Option	Option
Power Input		DC12V, 3A	DC12V, 3A
Dimensions (WxHxD)		218(W) x 44(H) x 202(D)	218(W) x 44(H) x 202(D)
Operating Temperature		0 °C to 40 °C	

► Specifications are subjected to change without prior notice.

H.264 STAND ALONE 4 CHANNEL DVR



Key Features

- H.264 algorithm hardware compression
- VGA output (for LCD monitor)
- 4 channel DVR 120(100) fps recording capability
- USB (device) port for firmware upgrade
- Support audio available
- USB2.0 (host) for back up
- Pentaplex operation (Playback/Recording/Backup/Ethernet /Live)
- Operate by mouse
- Multi language OSD
- Easy PTZ camera control
- IR remote controller
- Remote viewer via network
- Support DDNS(Dynamic Domain Name Server)

Technical Specifications

Model	DVR-A6800H
Compression	H.264 Hardware compression
Storage Capacity	1 SATA HDD
VGA (Option)	1 CH (supporting TFT LCD Monitor)
Video Input	4 CH
Video Output	Monitor / Spot Monitor
Audio Input	Input: 1 CH, Output: 1CH
Split Screen	Full Screen, Quad display
Compressed Rate	5 Step selectable
Recording Speed	NTSC: 120 fps PAL: 100 fps
Recording Resolution	360 x 240 (360 x 288)
Display	Real Time for all channel
Multi-Plex	Pentaplex operation (playback/recording/backup/Ethernet/live)
Zoom	Available
PIP	Available
Motion Detect	Detection division: 30 x 24
Recording Mode	Time, Motion, Schedule, Alarm
Search Mode	Percentage Search, date/Time Search, Event Search
Alarm Input	4 Alarm (NO/NC)
Relay Output	1 (NO/NC)
Backup	USB2.0 (HOST), back up via IP Network
IR Remote Controller	Built-In
Network (TCP/IP)	Remote Software (remote live view, playback, and save as AVI), IE (remote live view, playback, and save as AVI), Multi-User connection
Firmware upgrade	USB for firmware upgrade
Operation Temperature	41°F~104°F (5°C~40°C)
Operation Humidity	Less than 90%
Dimension(mm)	320(W) x 210(D) x 52(H)
Weight (N.W)	Approx 1.8 Kgs (W/O HDD)
Power Supply	DC adapter (12V DC 5A above)

► Specifications are subjected to change without prior notice.

STAND ALONE DVR



HDV-04CDR



HDV-08CDR



HDV-16CDR

Key Features

- Modular design, supporting 4, 8 and 16 video inputs, and 4, 8, 16 video output
- Embedded Linux operation system ensure high stability and reliability
- With CDR-W & USB for archiving
- Build in 2xHDD, one HDD removable
- Jog shuttle button for tracking recorded data
- Variable resolution of Full D1 720x480, CIF 360x240
- Support DDNS, PPPoE for dynamic IP address
- Support PTZ function
- VGA Output (Option)
- DVD+RW back up (Option)
- SATA RAID supported (Option)

Technical Specifications

Model	HDV-04CDR	HDV-08CDR	HDV-16CDR
Resolution	Live: 720 x 480(NTSC) 720 x 576(PAL) Record: 720 x 240 up to 60 PPS, 360 x 240 up to 120PPS (NTSC) 720 x 288 up to 50 PPS, 360 x 288 up to 100PPS (PAL)		
Video Input	BNC x 4	BNC x 8	BNC x 16
Video Looping Output	BNC x 4	BNC x 8	BNC x 16
Audio Input	RCA x 1		
Audio Output	RCA x 1		
Video Output	BNC x 2		
Mode	Triplex		
Display Frame	NTSC: 4 x 30 frame/sec PAL: 4 x 25 frame/sec	NTSC: 8 x 30 frame/sec PAL: 8 x 25 frame/sec	NTSC: 16 x 30 frame/sec PAL: 16 x 25 frame/sec
Recording Frame Rate (MUX)	NTSC: Max. 120/ 4 PPS PAL: Max. 100/ 4 PPS	NTSC: Max. 120/ 8 PPS PAL: Max. 100/ 8 PPS	NTSC: Max. 120/16 PPS PAL: Max. 100/16 PPS
Storage Media	Max. 2 IDE Hard Disk (One Removable), With One CD-RW		
Image Format	M-JPEG		
Compress Rate	Low: 18.3K bytes / field Medium: 23K bytes / field High: 32.8K bytes/ field Best: 41K bytes/ field		
Recording Mode	Manual / Alarm / Schedule		
Playback Speed	Fast Forward x 2 x 4 x 6 x 8 x 16 x 32 Fast Reverse x 2 x 4 x 6 x 8 x 16 Field by Field Playback		
On Screen Display & Setup	Title / Time / Date / Setup Menu		
Alarm Input	x 4	x 8	x 16
Relay Output	NO or NC programmable Contact x 1		
Password Control	Yes		
Serial Port	RS-232 & RS-485		
Event List	2000 Events / Each HDD		
Motion Detection	Yes		
Ethernet Compatibility	Yes		
Network Interface	Yes		
Back Up	USB or CD-RW		
Power Input	AC100V~240V Input (47 ~ 63Hz)		
Dimensions (W x H x D)	432(W) x 321(D) x 55(H)	430(W) x 373(D) x 95(H)	
Weight	4.5 Kgs	6.3 Kgs	
Operating Temperature	0 °C to 40 °C		



CK-103



CK-104

Model	CK-103	CK-104
Remote Control	RS-485	
Power Consumption	DC12V, 1A, 2W	
Operating Temperature	5°C to 45°C	
Operating Humidity	5 to 95% (non-condensation)	
Back Panel Pin Assignment		
Power Input	DC12V, 1A	
RS-485	T+	Link to DVR or dome camera R+ or A
	T-	Link to DVR or dome camera R- or B
	R+	Reserved
	R-	Reserved
RS-232	Link to PC RS-232 port	
ISP	In system programmer hold the ISP bottom and power on for updated mode	

► Specifications are subjected to change without prior notice.

MPEG4 NETWORK DVR WITH DVD+RW

Key Features

- Multiplex Operation (Recording, Playback, Archiving, Remove Viewing)
- Built in MPEG4 Codec with Configurable Quality
- Variable Recording Speeds Up to 120/100 (CIF) Picture per second for NTSC/PAL
- Audio Recording Capability
- Motion Detection Capability
- Built in up to four 3.5" IDE Hard Disk for HDV-F009, HDV-F016 (Two for HDV-F009D, HDV-F016D)
- Ethernet Interface for Remote Network Viewing and Controlling
- Jog Shuttle for picture by picture or Fast/Slow Viewing
- Easy to use User Friendly Control via Front Keypad, Shuttle / Jog IR Remote Controller (optional)
- On Screen Menu Operation with Multi-Language Support
- Real Time Live Display for all cameras
- USB2.0 Interface for Archiving
- HDV-F009D, HDV-F016D support DVD+RW for archiving



Technical Specifications

Model	HDV-F009 , HDVF009D	HDV-F016 , HDVF016D
Video Input	9 camera inputs (BNC), 1Vp-p/75 ohm	16 camera inputs (BNC), 1Vp-p/75 ohm
Video Output	1 BNC Video Out (1Vp-p / 75 ohm) from Main Monitor 1 BNC Video Out (1Vp-p / 75 ohm) from Call Monitor 9 Video Out (1Vp-p / 75 ohm) for Looping 1 Build in VGA output (optional)	1 BNC Video Out (1Vp-p / 75 ohm) from Main Monitor 1 BNC Video Out (1Vp-p / 75 ohm) from Call Monitor 16 Video Out (1Vp-p / 75 ohm) for Looping 1 Build in VGA output (optional)
Video Compression	MPEG4	
Recording Rate	Up to 120/100 (CIF) images per second for NTSC/PAL Up to 60/50 (Half-D1) images per second for NTSC/PAL Up to 30/25 (Full-D1) images per second for NTSC/PAL	Up to 120/100 (CIF) images per second for NTSC/PAL Up to 60/50 (Half-D1) images per second for NTSC/PAL Up to 30/25 (Full-D1) images per second for NTSC/PAL
Recording Resolution	Full-D1: 720 x 480 or 720 x 288 , Half-D1: 720 x 240 or 720 x 288 , CIF: 360 x 240 or 360 x 288	
Video Display	Full: 4, 7, 9 PIP (live only) and 2 x 2 Zoom for Live & Playback	Full: 4, 7, 9, 10, 13, 16 PIP (live only) and 2 x 2 Zoom for Live & Playback
Display Resolution	720x480 (NTSC) / 240 fps or 720x576 (PAL) / 200 fps 30 (NTSC) / 25 (PAL) for each camera	720x480 (NTSC) / 480 fps or 720x576 (PAL) / 400 fps 30 (NTSC) / 25 (PAL) for each camera
Alarm Input	9 alarm input	16 alarm input
Alarm Output	1 set of alarm output	
Back Up	HDV-F009,HDV-F016: up to four internal 3.5 IDE Hard Disk HDV-F009D, HDV-F016D: up to two internal 3.5 IDE Hard Disk	
Archive	USB 2.0 interface device for archiving	
External Storage	Provide USB2.0 for external USB memory HDV-F009D, HDV-F016D has one build in 3.5 DVR+RW	
Recording Mode	Instant Recording, Schedule, Event Recording (Motion , Video Loss, Alarm)	
Playback Mode	60 / 50 images per second for NTSC / PAL	
Playback Search	By date, time or event (Motion, Video Loss, Alarm)	
Motion Detection	Yes, with multiple detection areas (28_22) & different sensitivity for each camera	
Video Loss Detection / Event Log	Yes	
User Interface	User friendly OSD menu driven	
Setup	On screen display	
User Input Device	Front panel keypad with Jog shuttle , IR remote control (option)	
Timer	Built-in real time clock, auto time synchronize w NTP server (require internet connection)	
Watchdog Timer	Yes	
Title	12 characters title generator for each camera	
Ethernet	RJ45 connectors for network communications 10/100M bps	
RS232	9 pin female connector for local communication	
RS485	For PTZ and control keyboard	
Audio	4 mono input, 1 mono (speaker) output	
Power Input	AC100V ~ AC240V	
Power Consumption	60W	
Dimensions	430(W) x 72(H) x 385(D) mm	
Operating Temperature	0°C to + 40°C	



Model	CK-105		
Power Consumption	DC12V, 10W		
PTZ Control	Joystick (3D twist zoom)		
Device Control	PTZ Speed Dome, DVR, Access Control & Monitor		
Protocols	Pelco-D, Pelco-P		
Remote Control	RS-232 / RS-485		
Baud Rate	1200 ~ 38400		
LCD Display	20 x 2 Characters		
Integration	Up to 8 keyboard cascading connection		
Auto Surveillance	Position, Tour, Auto Pan	Wiring Box	Yes
Operating Temperature	0°C ~ 40°C	Operating Humidity	<95%
Dimension	380(W) x 180(H) x 95(D)	Weight	1.5Kg

► Specifications are subjected to change without prior notice.

VIVITRACK IV1000 SERIES



- **FACE & MOTION DETECTION**
- **AUTOMATED OPTICAL RESOLUTION ENHANCEMENT SYSTEM FOR PTZ CAMERAS**

● Key Features

- Automatically controls PTZ cameras
- Obtains high-resolution images
- Detects faces and/or moving objects
- Stores captured face images
- Isolates multiple faces
- Combines with DVR and face recognition systems
- Functions with various PTZ camera models

● General Description

ViViTrack is an intelligent tracking control system for pan-tilt-zoom(PTZ) cameras, enabling them to capture high-resolution images of objects or people. It allows PTZ camera to operate unsupervised and closely monitor areas for interesting activity. With the included face detection function, the system also captures faces and optionally stores them to a folder for future reference.

By assigning PTZ control to the ViViTrack system, standard recording systems obtain the view from the camera as it moves under the influence of ViViTrack images of objects or faces may be sent to specific directories or locations for further analysis. The DVR or other application may be a stand-alone unit or even installed in the same PC as the ViViTrack software, requiring only a video splitter or share the video output. If desired, detected faces may be independently captured and saved to a predefined folder.

● System Specification

Video

Video-In Source	RCA x 1
Video-In Format	NTSC

Captured Images

Resolution	320 x 240
Format	JPG

Interface

Serial Converter	RS232 to RS-422 / RS-485
PCI-Bus	PCI-V2.1 compliant

● Package Contents



PRO8101WT Capture Card

RS232 to RS422/RS485 converter

RS232 Cable

Program CD

User Manual

● System Requirements And Operating Environment

2.4 GHz Pentium CPU or above

512MB RAM, 10GB HDD, CD-ROM Drive

Once PCI slot and one RS232 COM Port

Approved Pan-Tilt-Zoom CCTV or Equivalent Video Camera

OS: Windows 2000/XP/Vista

Other: Microsoft DirectX 9.0 or above

► Specifications are subjected to change without prior notice.

IR ILLUMINATOR

● Technical Specifications



Model	IR-10
Input Voltage	DC12V, 450mA (+/-10%)
Output Voltage	DC12V
Distance	10 Meter (The distance base on average equipment)
View Angle / Beam Angle	45°C / 30°C
Power Consumption	2.0 Watts
Power On	CDS Auto Control
LED	28 unit Infrared LED
Window	39mm Heat-Resisting Glass
Status	Under 10 Lux by CDS
Wave	840nM
Water Resistant	IP 68
Construction	Aluminum, with original anodized finish
Operation Temp.	-20°C to +60°C
Dimensions(mm)	49 x 60(L)mm
Weight	175g

● Technical Specifications



Model	IR-100	IR-120
Operating Distance	100 Meters	120 Meters
Beam Spread (Flood Type)	30°	10°
Power Consumption	250 Watts	
Power On	CDS Auto Control	
Bulb	Halogen Lamp	
Window	120mm Heat-Resisting Glass	
Maximum Bulb Temperature	200°C	
Built in Filter	850nM	
Water Resistant	IP55	
Construction	Aluminum, with off white or black enamel finish	
Input Voltage	AC110V	
Operating Temperature	-20°C to 60°C	
Dimensions	158 x 310mm	
Weight	3.5 Kgs	

● Technical Specifications



Model	IR-20	IR-40	IR-60	IR-80
Operating Distance	Over 20 Meters	Over 40 Meters	Over 60 Meters	Over 80 Meters
Beam Spread (Flood Type)	30°	10°	30°	12°
View Angle / Beam Angle	65°/ 30°	25°/ 10°	65°/ 30°	65°/ 12°
Power Consumption	50 Watts (Low Power)		120 Watts (Low Power)	
Power On	CDS Auto Control			
Bulb	Halogen lamp			
Maximum Bulb Temperature	200°C			
Built in Filter	850nM			
Water Resistant	IP55			
Construction	Aluminum, with off-white or black baked enamel finish			
Input Voltage	AC117V / 220V			
Operating Temperature	-20°C to +60°C			
Dimensions	105 x 250(L)mm	105 x 250(L)mm	158 x 310(L)mm	
Weight	2.5 Kgs	2.5 Kgs	3.5 Kgs	

► Specifications are subjected to change without prior notice.

CAMERA ENCLOSURES



● Technical Specifications

Model	CH-904
Purpose	Outdoor
Construction	Aluminum
Dimension	295mm(L) x 124mm(W) x 95mm(H)
Weight	1.22Kgs



Model	CH-905L
Purpose	Outdoor
Accessory	Blower & Heater (option)
Construction	Aluminum
Input Voltage	DC12V, AC24V, 110VAC, 220VAC
Dimension	390mm(L) x 105mm(W) x 115mm(H)
Weight	1.22Kgs



Model	CH-917
Purpose	Outdoor
Accessory	Blower & Heater (option)
Input Voltage	DC12V, AC24V, 110VAC, 220VAC
Construction	Aluminum
Dimension	395mm(L) x 145mm(W) x 110mm(H)
Weight	1.4Kgs



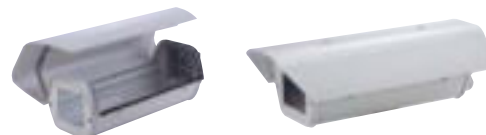
Model	CH-920
Type	Side Open
Purpose	Outdoor
Accessory	Blower & Heater (option)
Construction	Aluminum
Input Voltage	DC12V, AC24V, 110VAC, 220VAC
Dimension	125mm(L) x 126mm(W) x 370mm(H)
Weight	1.25Kgs



Model	CH-907
Purpose	Outdoor
Construction	Aluminum
Dimension	290mm(L) x 80mm(W) x 70mm(H)
Weight	0.56Kgs



Model	CH-912L CH-912M
Purpose	Outdoor
Accessory	Blower & Heater & Wiper (option)
Construction	Aluminum
Input Voltage	DC12V, AC24V, 110VAC, 220VAC
Dimension	CH-912L: 470mm(L) x 142mm(W) x 135mm(H) CH-912M: 40mm(L) x 110mm(W) x 111.5mm(H)
Weight	CH-912L 2.7Kgs, CH-912M 1.9Kgs



Model	CH-921
Type	Side Open
Purpose	Outdoor
Accessory	Blower & Heater (option)
Construction	Aluminum
Input Voltage	DC12V, AC24V, 110VAC, 220VAC
Dimension	140mm(L) x 112mm(W) x 400mm(H)
Weight	1.6Kgs

► Specifications are subjected to change without prior notice.

CAMERA BRACKETS



● Technical Specifications

Model	MB-804
MAX. Load Capacity	10 Kgs
Construction	Aluminum
Dimension	285mm
Weight	0.4Kgs



Model	MB-806	MB-806S	MB-807
MAX. Load Capacity	4 Kgs		
Construction	ABS Plastic		
Color	Black or Beige		
Dimension	120.5mm	160mm	180mm
Weight	0.2Kgs	0.25Kgs	

Model	MB-808
MAX. Load Capacity	4 Kgs
Construction	ABS Plastic
Color	Beige
Dimension	170mm
Weight	0.2Kgs



Model	MB-811	MB-814
MAX. Load Capacity	10 Kgs	
Construction	Iron	Aluminum
Dimension	290mm	226mm
Weight	0.75Kgs	0.45Kgs

Model	MB-818	MB-818L
MAX. Load Capacity	1 Kgs	5 Kgs
Construction	ABS Plastic	Aluminum
Dimension	189mm	279.4mm
Weight	0.2Kgs	0.6Kgs



Model	MB-812	MB-813	MB-820
MAX. Load Capacity	3Kgs	5 Kgs	10 Kgs
Construction	Aluminum		
Dimension	--	--	214mm
Weight	0.2Kgs	0.3Kgs	0.45Kgs

Model	MB-215
Type	L type housing Bracket
Max. Load	10 kg
Material / Color	Matel / Beige
Dimension	350(H) x 180(W)mm
Swivel Angle	360°
Tilt Angle	90°
Packing	10 pcs in one carton
N.W. G.W	12kgs, 13kgs

► Specifications are subjected to change without prior notice.