



ACCESS CONTROL

RBM2

- software instructions -

TABLE OF CONTENTS

to begin

- 📁 Preliminary operations page 2
- 📁 Configure a new system or modify an existing one page 3
- 📁 Configuration windows page 4

system configuration

- 📁 System configuration window - description page 5
- 📁 Normal type of entrance page 6
- 📁 "Double" type of entrance page 7
- 📁 Time span page 8
- 📁 APB time page 8
- 📁 Number of users page 8
- 📁 Traffic light page 9
- 📁 Password page 9
- 📁 Relay control page 9

users configuration

- 📁 User configuration window - description page 10
- 📁 Displaying users page 11
- 📁 New user page 12
- 📁 Master card page 13
- 📁 Prepaid page 14
- 📁 Credit management page 15
- 📁 APB page 16
- 📁 Outputs page 17

Prints

- 📁 Printout of configurations page 18

RBM2

TO BEGIN

- Preliminary operations
- Configure a new system or modify an existing one
- Configuration windows

SYSTEM CONFIGURATION

- System configuration window
- Normal type of entrance
- "Double" type of entrance
- Time span
- APB time
- Number of users
- Traffic light
- Password
- Relay control

USERS CONFIGURATION

- User configuration window
- Displaying users
- New user
- Master Card
- Prepaid
- Credit management
- APB
- Outputs

PRINTS

- Configurations printout

n° doc. - 319T24

rev. - 1.0

02/2003

pag. 2 di 18

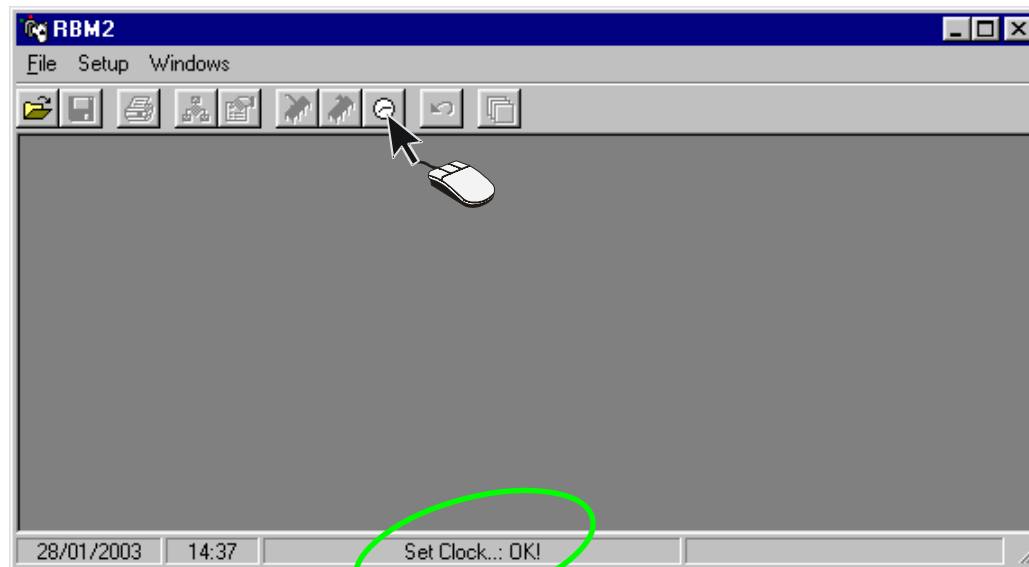
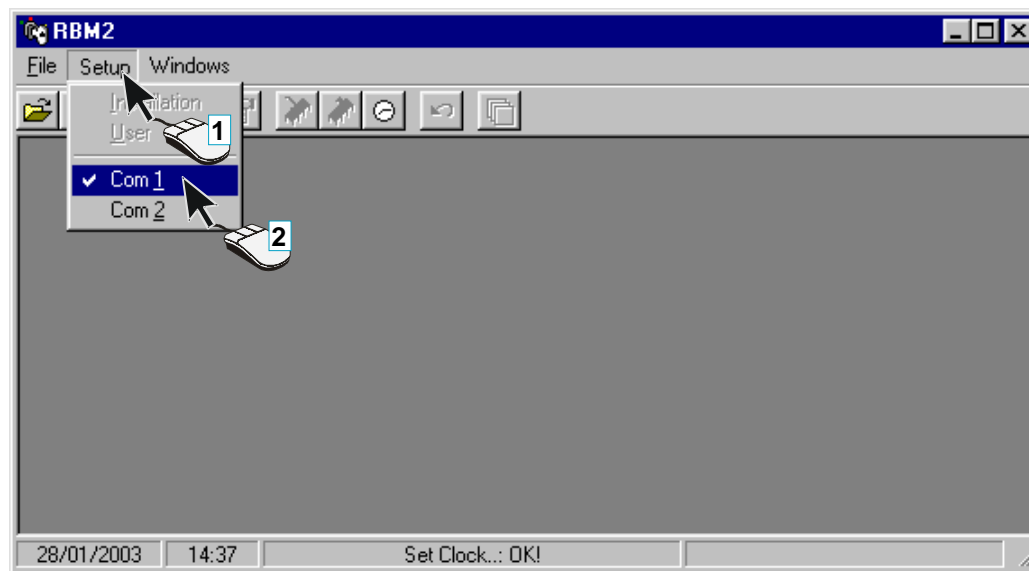
Preliminary operations

To install the software, read the booklet included in the Rbm2 package.

Once installation is complete and after the programme has been launched, check that the serial port selected (*Com1* as default) is the right one...

... and update the system clock.

Please note: if the "*Communication error*" message appears, it means that the serial port selected it is not the correct one.



RBM2

TO BEGIN

- Preliminary operations
- Configure a new system or modify an existing one
- Configuration windows

SYSTEM CONFIGURATION

- System configuration window
- Normal type of entrance
- "Double" type of entrance
- Time span
- APB time
- Number of users
- Traffic light
- Password
- Relay control

USERS CONFIGURATION

- User configuration window
- Displaying users
- New user
- Master Card
- Prepaid
- Credit management
- APB
- Outputs

PRINTS

- Configurations printout

n° doc. - 319T24

rev. - 1.0

02/2003

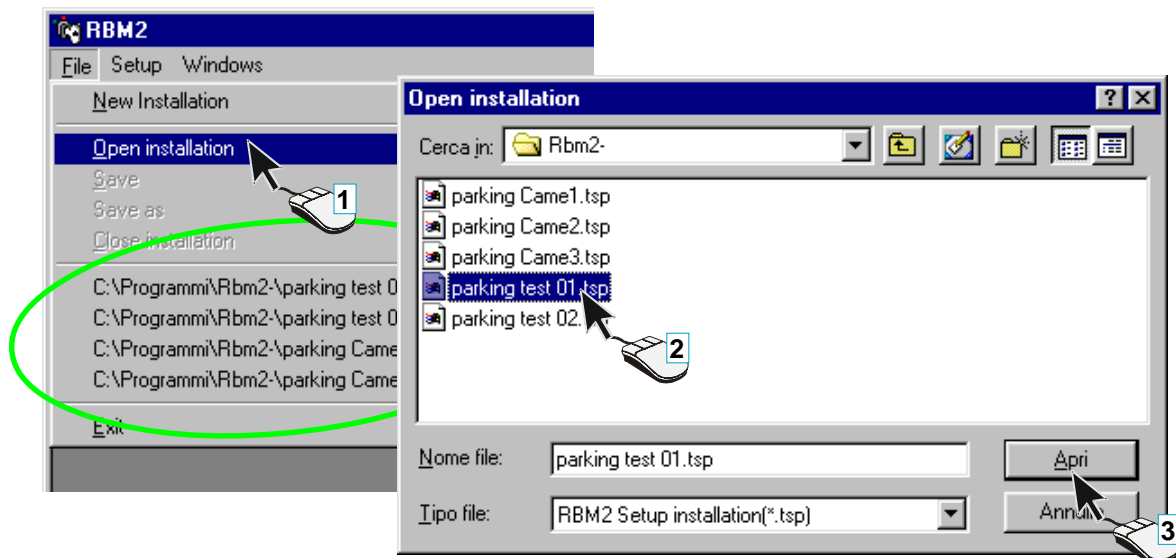
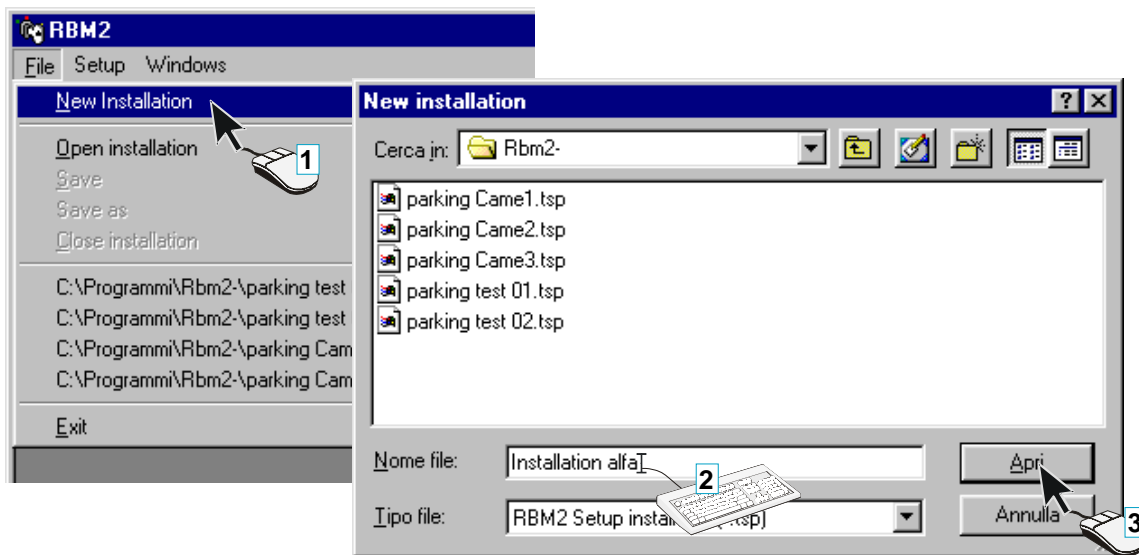
pag. 3 di 18

Configure a new system or modify an existing one

Now you may configure a new system by entering a name in the *Nome file* field...

... or modify an existing system by choosing from the list offered (or directly in the *File* menu, where the last 4 files created or modified appear).

*Please note: when you select **New System** or **Open System**, the software goes to the file where it is installed (C:\Programmes\Rbm2, except for changes made during installation), but you may browse through your hard disk either to save files or open files previously saved.*



Click on the *Apri* button to proceed

Configuration windows

The programme opens the system and users configuration windows: click on the *Arrange Windows* icon in order to see them both, or go easily from one window to the other with the *Configure System* and *Configure User* icons.

TO BEGIN

- Preliminary operations
- Configure a new system or modify an existing one
- Configuration windows

SYSTEM CONFIGURATION

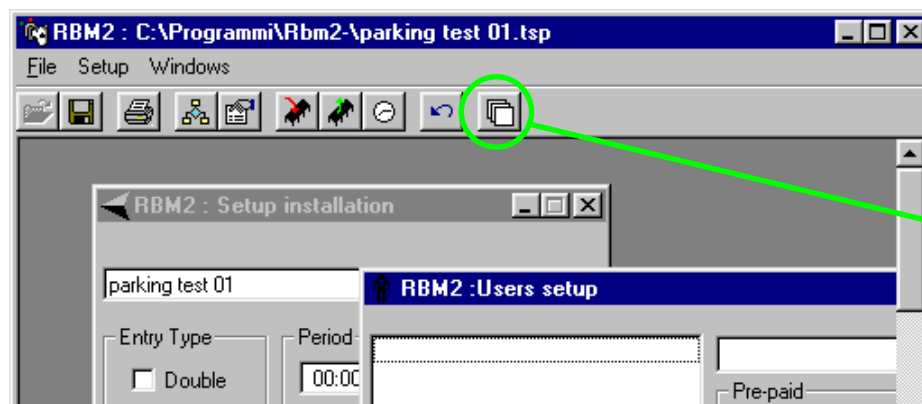
- System configuration window
- Normal type of entrance
- "Double" type of entrance
- Time span
- APB time
- Number of users
- Traffic light
- Password
- Relay control

USERS CONFIGURATION

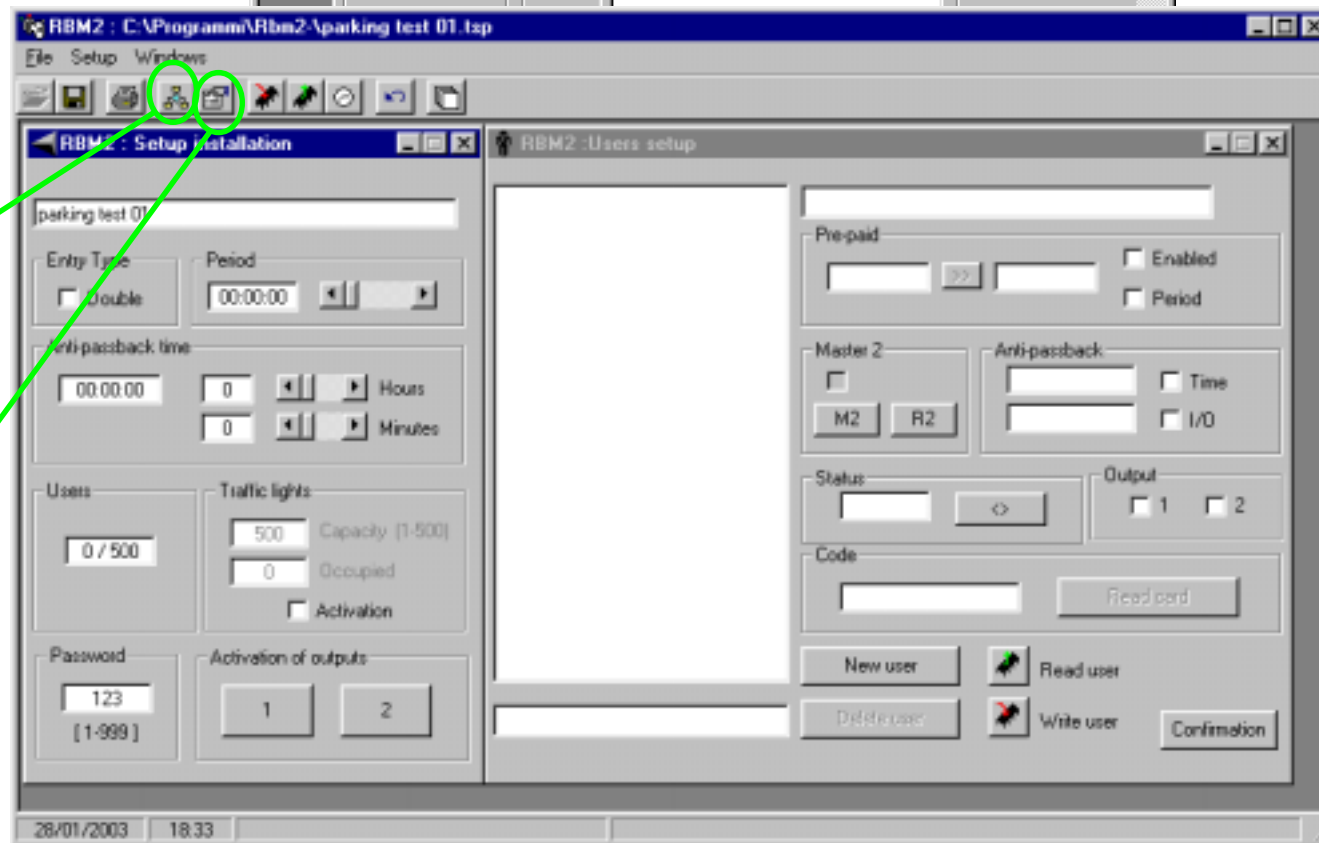
- User configuration window
- Displaying users
- New user
- Master Card
- Prepaid
- Credit management
- APB
- Outputs

PRINTS

- Configurations printout



Arrange Windows



Configure System



Configure User



RBM2

TO BEGIN

- Preliminary operations
- Configure a new system or modify an existing one
- Configuration windows

SYSTEM CONFIGURATION

- System configuration window
- Normal type of entrance
- "Double" type of entrance
- Time span
- APB time
- Number of users
- Traffic light
- Password
- Relay control

USERS CONFIGURATION

- User configuration window
- Displaying users
- New user
- Master Card
- Prepaid
- Credit management
- APB
- Outputs

PRINTS

- Configurations printout

n° doc. - 319T24

rev. - 1.0

02/2003

pag. 5 di 18

System configuration window - description

Description of the system configuration window:

A - system name field; it is possible to accept the name suggested (which is the name of the file you entered in the **NEW SYSTEM** procedure), or change it if you so desire but the name of the file itself remains the same.

B - Entrance type selection field of the type of entrance desired.

C - Time span Set-up area of the amount of time associated with a credit unit.

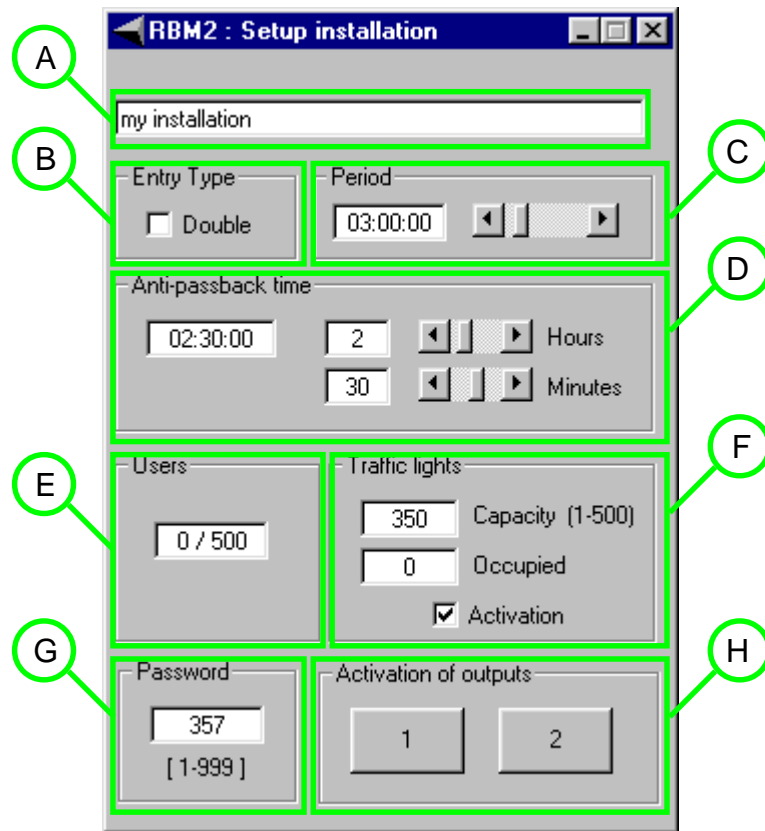
D - APB time Set-up area of the time span after which it is possible to re-enter.

E - Number of users Display area of the number of active (saved) users (Cards) in the system.

F - Traffic light Configuration area of a possible traffic light system.

G - Password Password display and modification area.

H - Relay control System keys for relay control.





RBM2

TO BEGIN

- Preliminary operations
- Configure a new system or modify an existing one
- Configuration windows

SYSTEM CONFIGURATION

- System configuration window
- Normal type of entrance
- "Double" type of entrance
- Time span
- APB time
- Number of users
- Traffic light
- Password
- Relay control

USERS CONFIGURATION

- User configuration window
- Displaying users
- New user
- Master Card
- Prepaid
- Credit management
- APB
- Outputs

PRINTS

- Configurations printout

n° doc. - 319T24

rev. - 1.0

02/2003

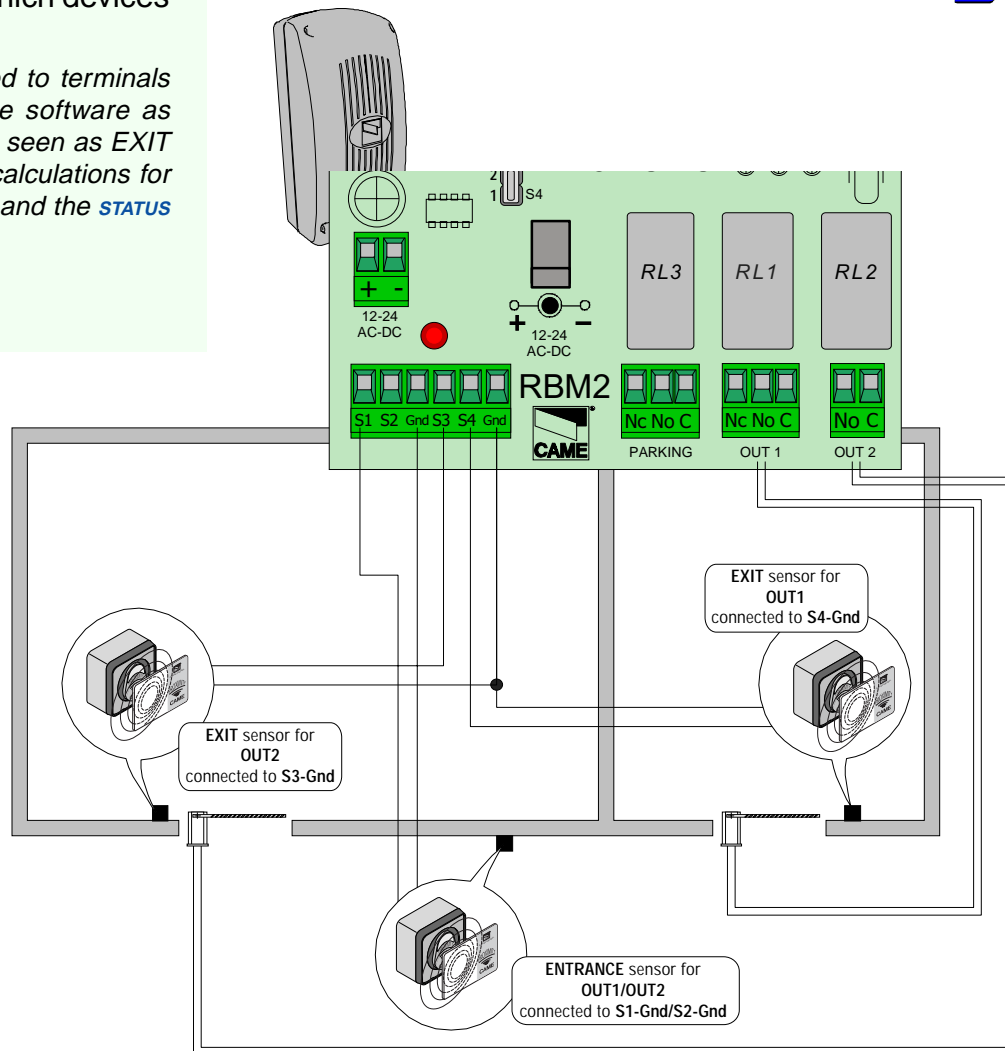
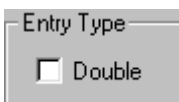
pag. 6 di 18

Normal type of entrance

By leaving *Entry Type* as suggested by Rbm2 (*Double* mode not selected), the sensors connected to terminals S1/S2-Gnd and S3/S4-Gnd can activate relay RL1, RL2 or both, and the choice must be made when the Card is saved in **USER CONFIGURATION>OUTPUTS**.

With this selection the software determines which devices to activate with each particular Card.

Please note: the activation of the sensors connected to terminals S1-Gnd and S2-Gnd are always considered by the software as ENTRANCE input whereas S3-Gnd and S4-Gnd are seen as EXIT input: this allows the software make the necessary calculations for the PREPAID, the AntipassBack (APB), the TRAFFIC LIGHT and the STATUS display.



Remember **to save** and **to write** on Rbm2 for each selection and/or modification that you make to this and other areas of the **SYSTEM CONFIGURATION!**



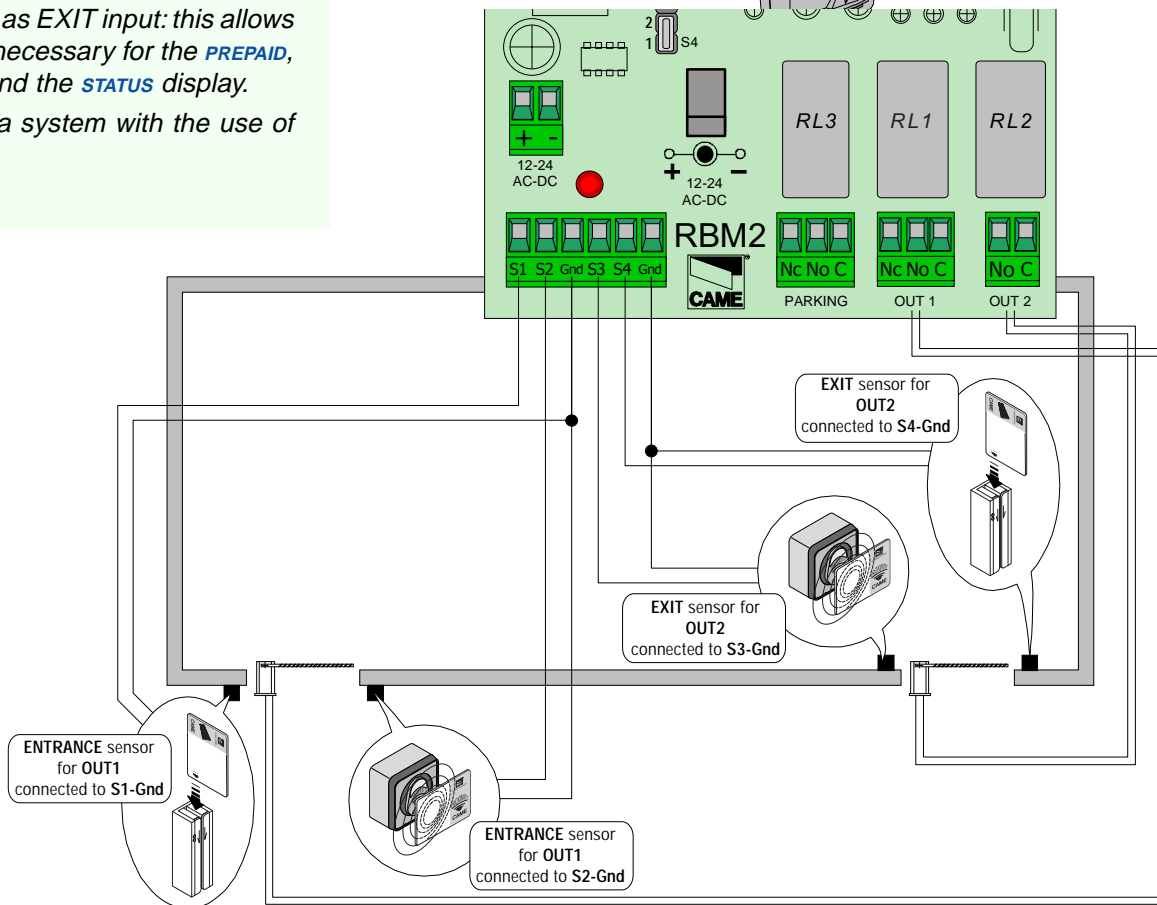
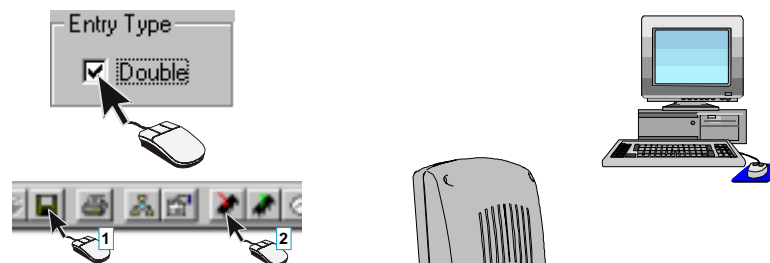
“Double” type of entrance

By selecting the *Double Entry Type*, Rbm2 forces the sensors connected to terminals S1/S2-Gnd to activate relay RL1 and then to command the device connected to OUT1; the same type of forcing involves the sensors connected to terminals S3/S4-Gnd for RL2 and OUT2.

This selection is best for systems **where ENTRANCE and EXIT are two separate automations** and are connected respectively to OUT 1 and OUT2.

*Please note: the activation of the sensors connected to terminals S1-Gnd and S2-Gnd is always seen by the software as ENTRANCE input whereas S3-Gnd and S4-Gnd is seen as EXIT input: this allows the software to handle all the calculations necessary for the **PREPAID**, the **AntipassBack (APB)**, the **TRAFFIC LIGHT** and the **STATUS** display.*

In the example given, we have illustrated a system with the use of both magnetic cards and proximity cards.



TO BEGIN

- Preliminary operations
- Configure a new system or modify an existing one
- Configuration windows

SYSTEM CONFIGURATION

- System configuration window
- Normal type of entrance
- “Double” type of entrance
- Time span
- APB time
- Number of users
- Traffic light
- Password
- Relay control

USERS CONFIGURATION

- User configuration window
- Displaying users
- New user
- Master Card
- Prepaid
- Credit management
- APB
- Outputs

PRINTS

- Configurations printout

TO BEGIN

- Preliminary operations
- Configure a new system or modify an existing one
- Configuration windows

SYSTEM CONFIGURATION

- System configuration window
- Normal type of entrance
- "Double" type of entrance
- Time span
- APB time
- Number of users
- Traffic light
- Password
- Relay control

USERS CONFIGURATION

- User configuration window
- Displaying users
- New user
- Master Card
- Prepaid
- Credit management
- APB
- Outputs

PRINTS

- Configurations printout

Time span

To set the time you wish to associate with a unit of credit for paid access systems with the *Prepaid* system use the scroll bar.

The set time is unique, not subject to time limits and is valid for users subject to payment for access (see [USER CONFIGURATION>PREPAID](#)).



APB time

If you wish to assign APB (AntipassBack, in other words, an amount of time that needs to pass before allowing a user to enter again) time, use the scroll bars.

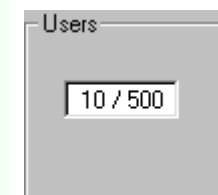
The set time is unique, not subject to time limits and is valid for users subject to an APB time limit (see [USER CONFIGURATION>APB](#)).



Number of users

This area shows the number of Cards that are currently active (saved) in the system, including the Master Card.

To update this displayer, open the *System Configuration* window and then carry out an Rbm2 reading.





RBM2

TO BEGIN

- Preliminary operations
- Configure a new system or modify an existing one
- Configuration windows

SYSTEM CONFIGURATION

- System configuration window
- Normal type of entrance
- "Double" type of entrance
- Time span
- APB time
- Number of users
- Traffic light
- Password
- Relay control

USERS CONFIGURATION

- User configuration window
- Displaying users
- New user
- Master Card
- Prepaid
- Credit management
- APB
- Outputs

PRINTS

- Configurations printout

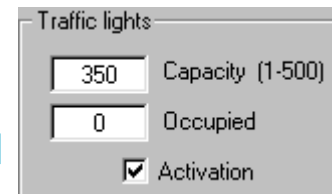
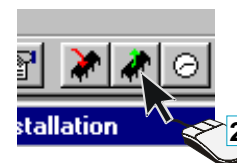
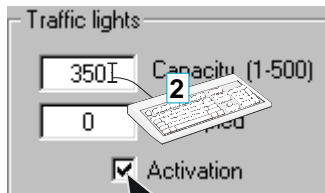
After having connected a traffic light to the PARKING terminals, it must first be activated in the **Traffic light** area and then enter the number of places available (not over 500, which is the maximum number of Cards managed by the system).

To check the number of users present in the system, open the **System Configuration** window and then carry out an Rbm2 reading.

*Please note: to control users via the traffic light, it is necessary to enable the AntipassBack in I/O mode (see **USERS CONFIGURATION>APB**).*

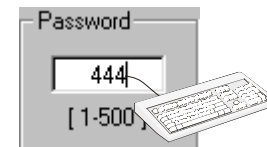
Master Cards do not increase/decrease the count.

Traffic light



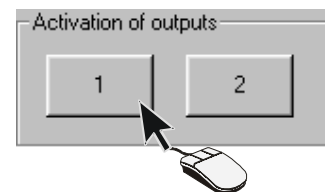
Password

The default password is 123; to change it, select and enter a number between 1 and 500.



Relay control

In this area you may control opening of the relay at any time: it is a system safety function that allows control of the devices connected to relays 1 and 2 in case it is required (loss of Card, emergency entrances or exits, etc).



User configuration window - description

Description of the user configuration window:

A - user name field.

B - *recorded users*

Recorded user display window.

C - *User search*

User name search field.

D - *Prepaid*

Prepaid mode configuration area for each user.

E - *Master 2*

Management area of the second Master Card.

F - *APB*

AntipassBack mode configuration area for each user.

B - *Status*

Display area of the presence or absence of a user within the system.

H - *Outputs*

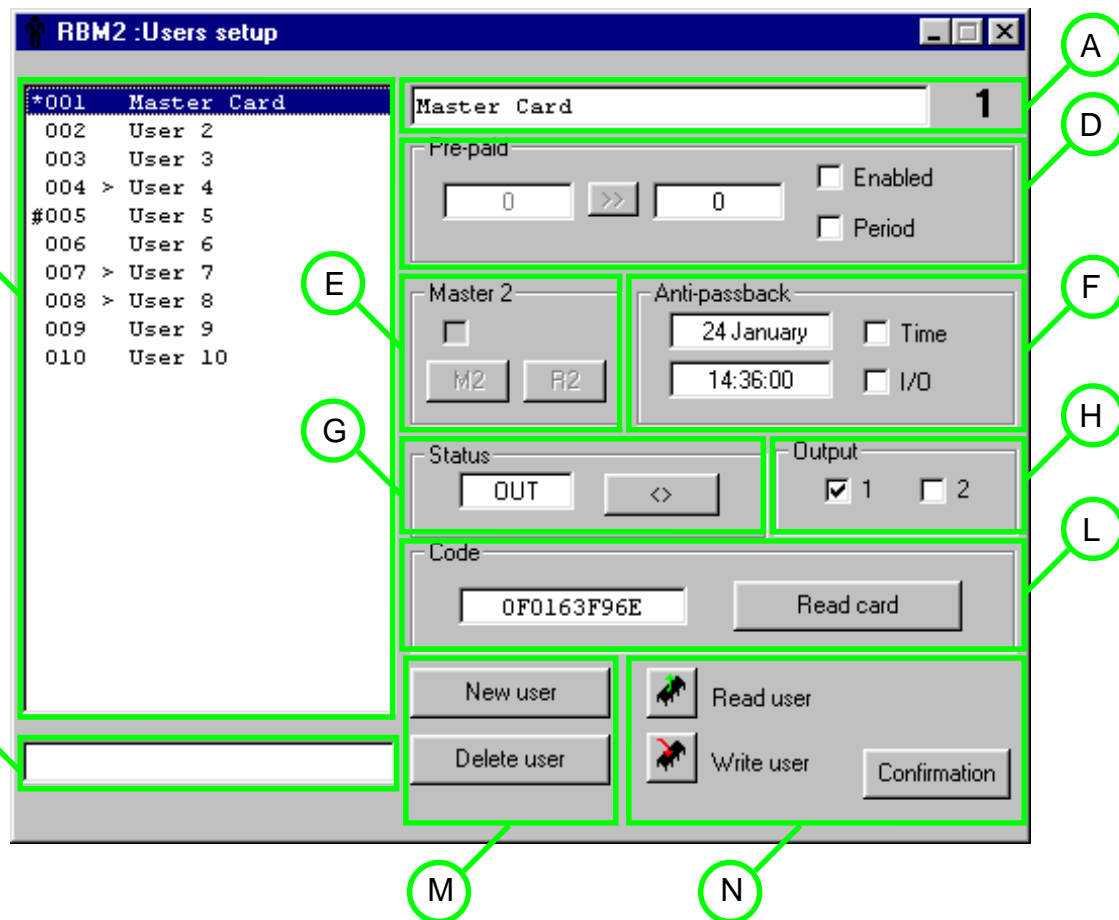
Selection area of the outputs to associate to the Card.

L - *Code*

Scanning and display area of Card codes.

M - User addition or elimination keys.

N - Data reading, entering and saving to and from the Rbm2 card



TO BEGIN

- Preliminary operations
- Configure a new system or modify an existing one
- Configuration windows

SYSTEM CONFIGURATION

- System configuration window
- Normal type of entrance
- "Double" type of entrance
- Time span
- APB time
- Number of users
- Traffic light
- Password
- Relay control

USERS CONFIGURATION

- User configuration window
- Displaying users
- New user
- Master Card
- Prepaid
- Credit management
- APB
- Outputs

PRINTS

- Configurations printout

Displaying users

In the *User Configuration* window there are:

A - a user name allocation window: the name (optional) can be entered when the user is inserted or at any other time; after entering it, save it by clicking on the *Confirmation* button;

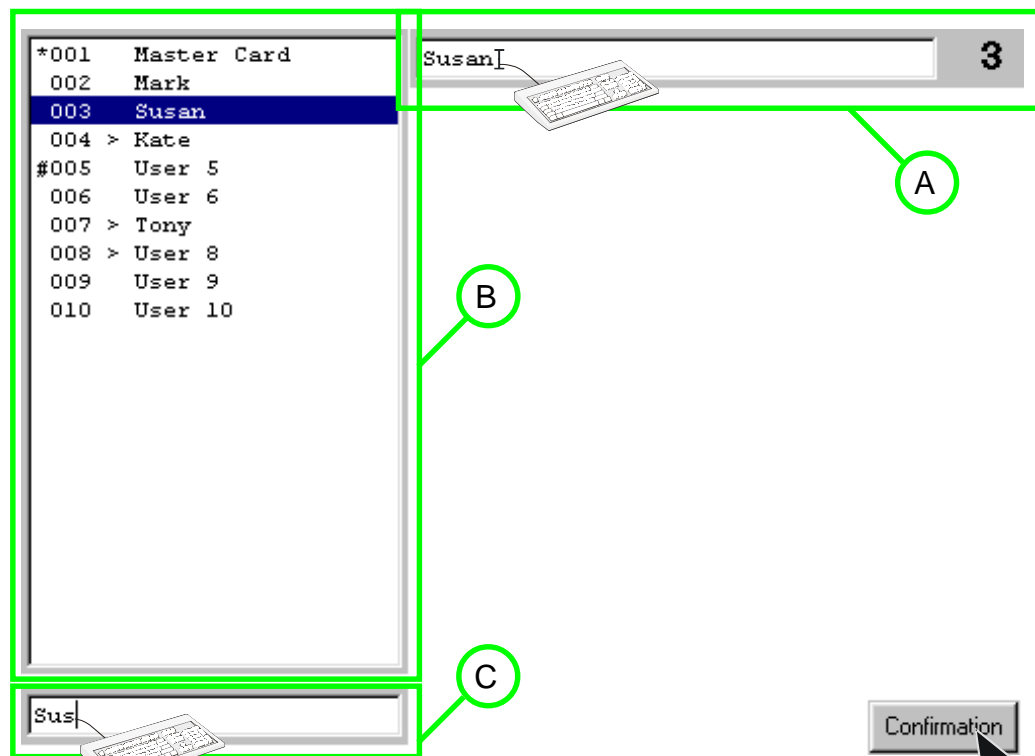
B - a read-only window where all the saved users appear; the symbols that may appear next to the progressive number or to the name have the following meanings:

* primary Master Card (it is always the first Card recorded)

Second Master Card (you may enable or disable any of the following Cards at any time)

> the user is currently present within the system;

C - user name search window: enter the full name or the first letters.



TO BEGIN

- Preliminary operations
- Configure a new system or modify an existing one
- Configuration windows

SYSTEM CONFIGURATION

- System configuration window
- Normal type of entrance
- "Double" type of entrance
- Time span
- APB time
- Number of users
- Traffic light
- Password
- Relay control

USERS CONFIGURATION

- User configuration window
- Displaying users
- New user
- Master Card
- Prepaid
- Credit management
- APB
- Outputs

PRINTS

- Configurations printout

TO BEGIN

- Preliminary operations
- Configure a new system or modify an existing one
- Configuration windows

SYSTEM CONFIGURATION

- System configuration window
- Normal type of entrance
- "Double" type of entrance
- Time span
- APB time
- Number of users
- Traffic light
- Password
- Relay control

USERS CONFIGURATION

- User configuration window
- Displaying users
- New user
- Master Card
- Prepaid
- Credit management
- APB
- Outputs

PRINTS

- Configurations printout

Follow this procedure to add a new user:

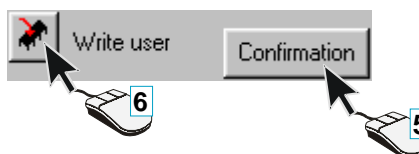
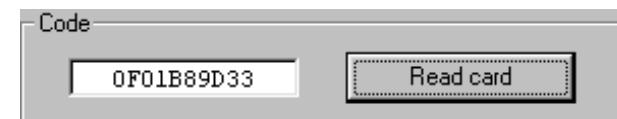
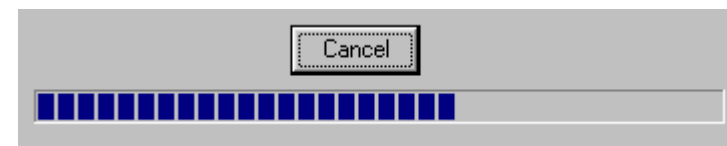
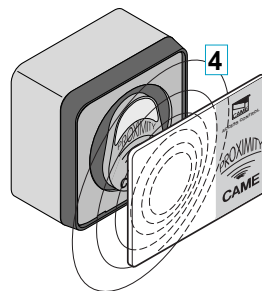
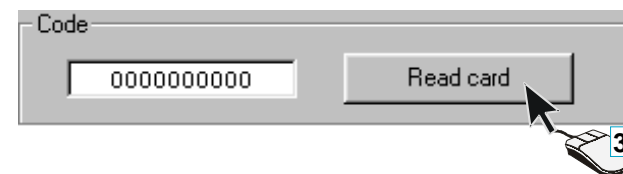
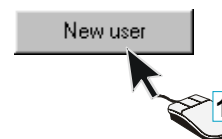
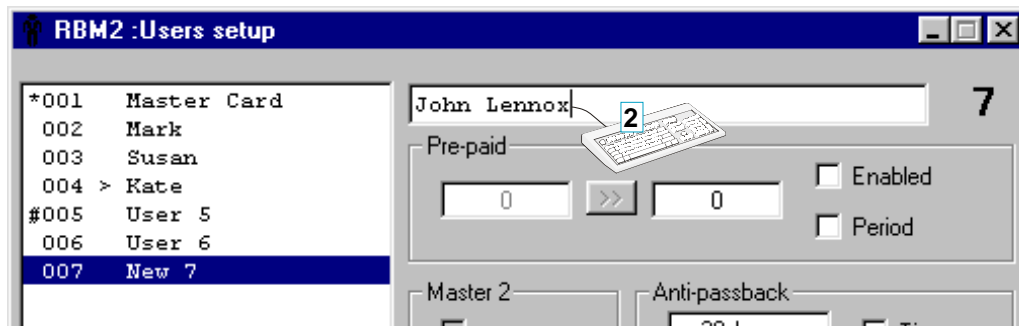
- 1 - click on the **New user** button;
- 2 - enter a name;
- 3 - click on the **Read card** button;
- 4 - While the progression bar scrolls, expose the Card to the TSP00 sensor (with proximity cards) or swipe it across the LT001 sensor (with magnetic cards); if not fate in time, click of new **Read card**. Once the card is recorded, the **Code** window will display the Card code;
- 5 and 6 - confirm and write on Rbm2.

Then continue with the other user configurations (see the following pages)

*Remember **to confirm** and **to write** on Rbm2 each time you make a select and/or modify in this and in other **USER CONFIGURATION** areas!*



New user



TO BEGIN

- Preliminary operations
- Configure a new system or modify an existing one
- Configuration windows

SYSTEM CONFIGURATION

- System configuration window
- Normal type of entrance
- "Double" type of entrance
- Time span
- APB time
- Number of users
- Traffic light
- Password
- Relay control

USERS CONFIGURATION

- User configuration window
- Displaying users
- New user
- Master Card
- Prepaid
- Credit management
- APB
- Outputs

PRINTS

- Configurations printout

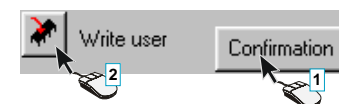
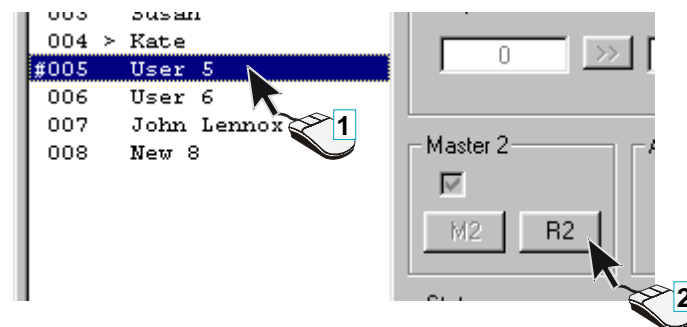
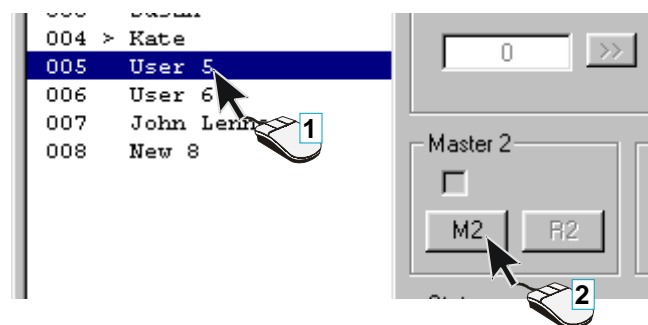
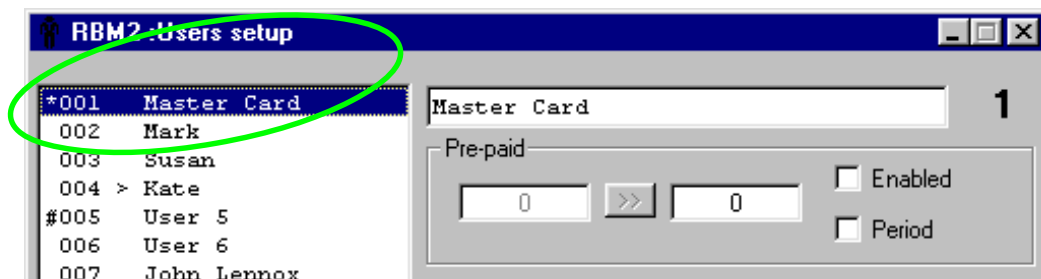
Master Cards are only used as “**pass-partouts**” and for the management of Rbm2 in Stand Alone mode, that is without connecting to the computer.

The software always designates the first Card saved as the Master Card and it is not possible to change it.

It is nevertheless possible to activate a second Master Card simply by selecting and pressing **M2** (**R2** to remove it); to change it in order to assign it to another User/Card, simply repeat the procedure.

Caution! Master Cards should not be associated with Prepaid or Apb, but only with Outputs (if in normal Entry Type mode).

Master Card



TO BEGIN

- Preliminary operations
- Configure a new system or modify an existing one
- Configuration windows

SYSTEM CONFIGURATION

- System configuration window
- Normal type of entrance
- "Double" type of entrance
- Time span
- APB time
- Number of users
- Traffic light
- Password
- Relay control

USERS CONFIGURATION

- User configuration window
- Displaying users
- New user
- Master Card
- Prepaid
- Credit management
- APB
- Outputs

PRINTS

- Configurations printout

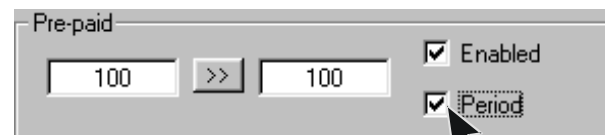
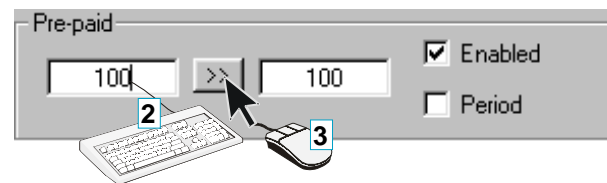
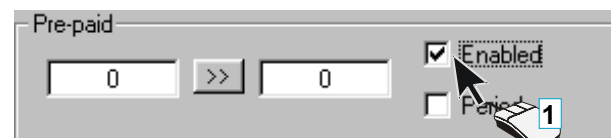
If the user is subject to pay for entrance, first it is necessary to enable the user, then to enter the prepaid credit in the left window and lastly to transfer them to the right window;

in this way a unit of credit will be detracted **each time the user enters.**

If instead it is preferable that the credit be detracted after a certain period of time (defined in **SYSTEM CONFIGURATION>TIME SPAN**), *Period* must be selected.

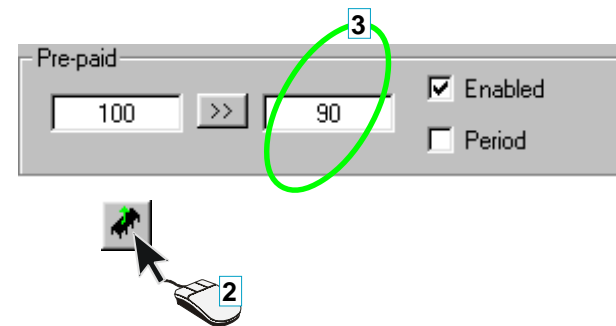
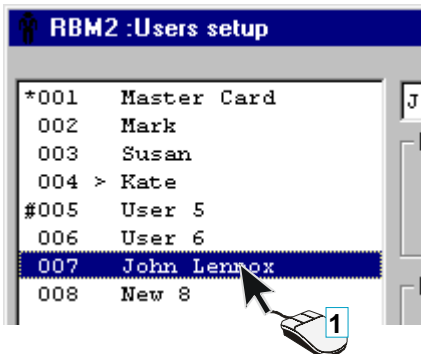
With this selection, Rbm2 detracts a unit of credit **each time period** that user stays inside.

Prepaid



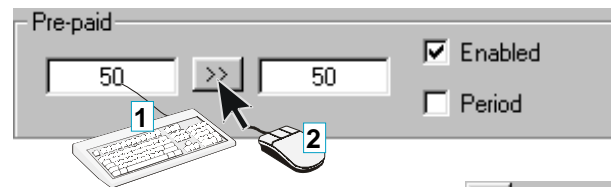
Credit management

To see the remaining credit of a user, click on **Read User** after having selected the user and the credit will be displayed in the right field; when the balance is 0, the user is not allowed to enter again until new credit is acquired.

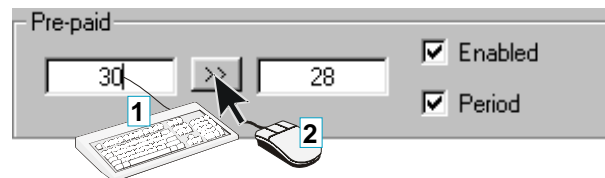
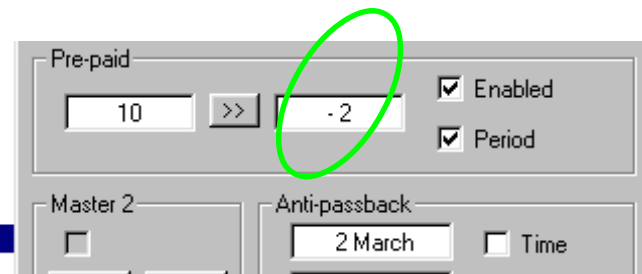
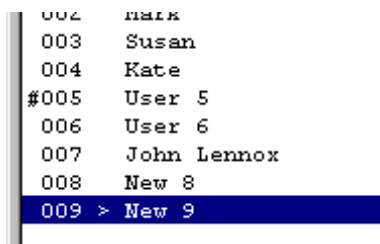


To add credit, enter them and transfer them as before: the new credit available will appear immediately.

Please note: if there was remaining credit, it will be deleted.



In the **Prepaid** by **Period** mode remaining credit can become negative (if the user remains within the system for a long time) and so the user is not allowed to exit until new credit is added (enough to cover the negative credit).



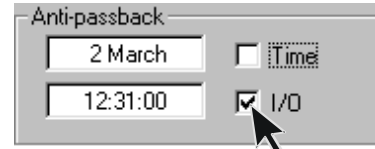
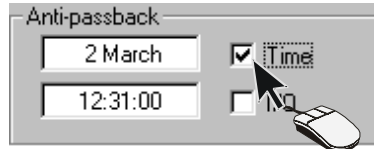
APB (AntiPassBack)

The AntipassBack does not allow improper use of a Card (the exchange of cards between users).

To enable a user for entries regulated by APB, either the *Time* mode (a single entry for each period of time set in **SYSTEM CONFIGURATION>APB TIME**) or the *I/O* mode (In/Out, which restricts entry as long as the user is still present within the system) must be selected.

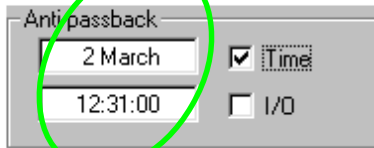
The date and time that appear in the two fields in the *APB* area refer to the last movement recorded by Rbm2 for the user selected (and it is possible to read if it was an entrance or an exit in the *Status* window); it is updated every time the user data is read.

Please note: to update all the users click on *Read Rbm2* and answer *Si* to the software's request.

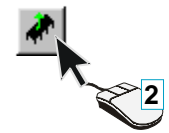
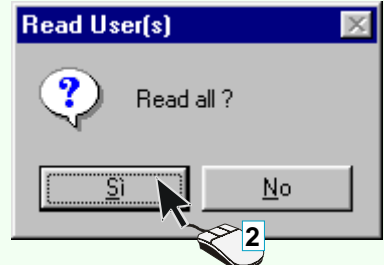
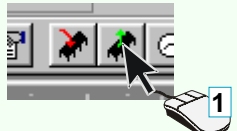


*001	Master Card
002	Mark
003	Susan
004	Kate
#005	User 5
006	User 6
007	John Lennox
008	New 8
009 >	New 9

date and time of the last movement recorded



type of last movement recorded:
IN - entrance / OUT - exit



TO BEGIN

- Preliminary operations
- Configure a new system or modify an existing one
- Configuration windows

SYSTEM CONFIGURATION

- System configuration window
- Normal type of entrance
- "Double" type of entrance
- Time span
- APB time
- Number of users
- Traffic light
- Password
- Relay control

USERS CONFIGURATION

- User configuration window
- Displaying users
- New user
- Master Card
- Prepaid
- Credit management
- APB
- Outputs

PRINTS

- Configurations printout

RBM2

TO BEGIN

- Preliminary operations
- Configure a new system or modify an existing one
- Configuration windows

SYSTEM CONFIGURATION

- System configuration window
- Normal type of entrance
- "Double" type of entrance
- Time span
- APB time
- Number of users
- Traffic light
- Password
- Relay control

USERS CONFIGURATION

- User configuration window
- Displaying users
- New user
- Master Card
- Prepaid
- Credit management
- APB
- Outputs

PRINTS

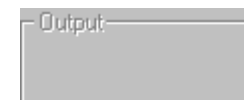
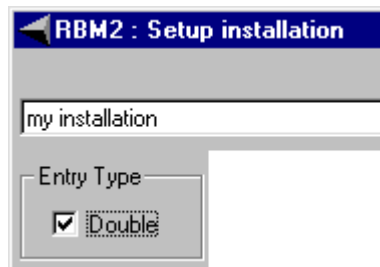
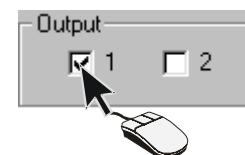
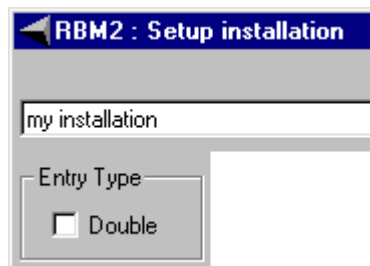
- Configurations printout

When a new user (or a new Card) is added, if you decided not to modify the *Entry Type* suggested by Rbm2 (see [SYSTEM CONFIGURATION](#)), you must enable the Card to activate relay 1 or relay 2.

You may also select both, for example if automation is connected to one outlet and lights to another.

If the *Double Entry Type* is chosen instead, the *Output* area will not be active.

Outputs



TO BEGIN

- Preliminary operations
- Configure a new system or modify an existing one
- Configuration windows

SYSTEM CONFIGURATION

- System configuration window
- Normal type of entrance
- "Double" type of entrance
- Time span
- APB time
- Number of users
- Traffic light
- Password
- Relay control

USERS CONFIGURATION

- User configuration window
- Displaying users
- New user
- Master Card
- Prepaid
- Credit management
- APB
- Outputs

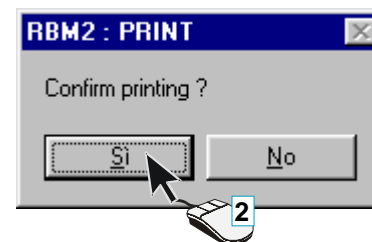
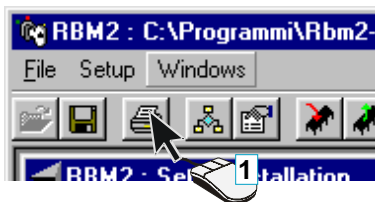
PRINTS

- Configurations printout

Click on the *Print* button to print the configuration of the system and of all the saved users, with their respective selections.

Please note: The software directs the print input to the default Windows printer, so you should test the status and the properties of the default printer; as for single-sheet printers (not continuous sheet), we recommend selecting an A4 Horizontal sheet and suitable margins in the printer's properties.

Printout of configurations



```

-----
CAME Cancelli Automatici spa : SETUP INSTALLATION RBM2
-----
Date : 03-02-2003 16:04:23
File : C:\Programmi\Rbm2-\parking test 01.tsp
User name : my installation
Number of users : 9 / 500
Anti-Passback time : 02:30:00
Time period : 01:30:00
Installation capacity : 350
Occupied places : 0
Traffic lights : OFF
Setup Entries : Double
Local Code : 321
-----
USER LIST
-----

```

No.	Pos.	User Name	APB	APBT	PREP	PRET
1)	*001	Master Card	---	---	---	---
2)	002	Mark	--X--	---	--X--	--X--
3)	003	Susan	--X--	---	--X--	---
4)	004 >	Kate	---	--X--	--X--	---
5)	#005	User 5	---	---	---	---
6)	006	User 6	---	--X--	--X--	---
7)	007 >	John Lennox	---	--X--	--X--	---
8)	008	New 8	--X--	---	--X--	--X--
9)	009 >	New 9	---	---	--X--	--X--

```

-----

```